



240x240 1.3" Round Lcd Display 12 Pins SPI Interface For Smart Wearable Devices

Our Product Introduction

for more products please visit us on chenghaolcd.com

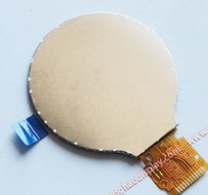
Basic Information

- Place of Origin: China Shenzhen
- Brand Name: Chenghao Optoelectronic
- Certification: CE RoHS FCC
- Model Number: CH130QV05A
- Minimum Order Quantity: 100 pcs
- Packaging Details: All the products are packed in right way to keep it safe. For small sizes of products we use tray + carton, For bigger sizes we use foam slot + carton. we also design packages according to customers' requirements
- Delivery Time: 3~7 Days
- Payment Terms: TT or Others
- Supply Ability: 50000000 pcs/month



Product Specification

- Product Name: 1.3" Round Lcd Display
- FPC Pins: 12pin
- Luminance: 300 Cd/m2
- Display Type: 1.3" TFT
- Color: 262K/65K
- Operating Temperature: -20 ~ +70°C
- Storage Temperature: -30 ~ +80°C
- Display Mode: IPS/Transmissive/Normally Black
- Resolution: 240*240 Dots
- Highlight: Smart Wearable Devices Round Lcd Display, 1.3" Round Lcd Display, 240x240 Round Lcd Display



More Images





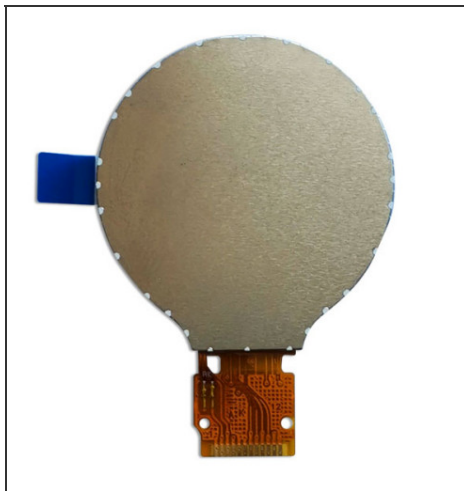
Product Description

Product Description:

Chenghao CH130QV05A is a custom-designed small round LCD screen for customers' wearable devices. This round screen has an active area of 1.3 inches and can display images or videos at a resolution of 240*240. The screen adopts an impressive IPS/transmissive/normally black display mode, which can achieve a wide viewing angle of 80/80/80/80 degrees. The screen also supports SPI interface, has a brightness of 300 cd/m2, and can operate perfectly in a temperature range of -20 to +70°C. In addition, CH130QV05A is RoHS-compliant and halogen-free, ensuring that it meets the latest environmental regulations.



Features:



(1) The CH130QV05A display is highly favored by customers for its unique appearance. Its most notable feature is its 1.3-inch mini size, which makes it suitable for a variety of portable small devices, such as smart wearable devices and portable mobile devices. In addition, its circular display area adds to its appeal.

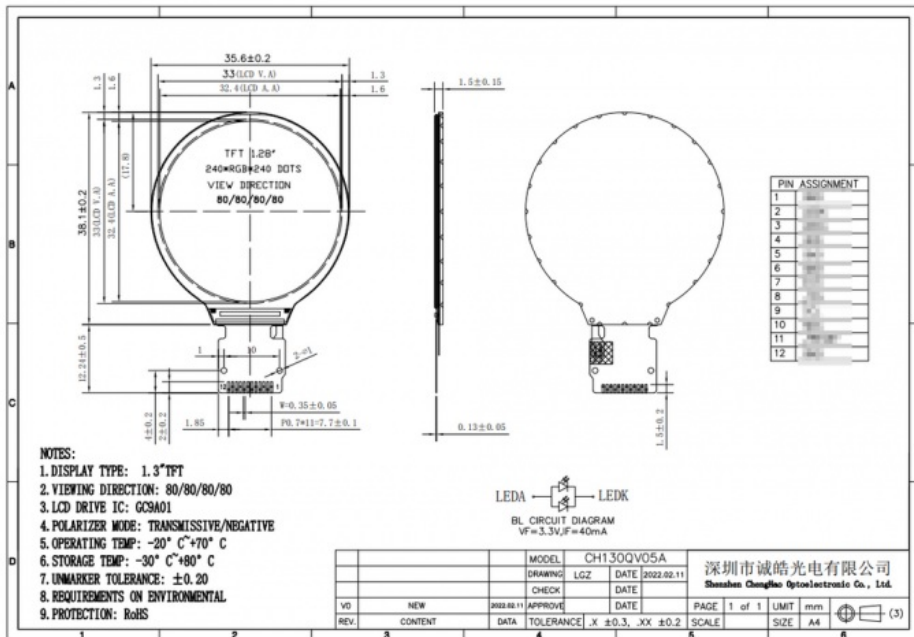
(2) In terms of durability, this mini LCD screen is also designed for wide temperature environment use, making it a reliable choice for devices working in environments with rapid temperature changes. With its ability to operate smoothly for more than 30,000 hours in environments from -20 to +70 degrees Celsius, you can rest assured that this display will work efficiently and accurately when you need it.

(3) In terms of display quality, the CH130QV05A is also excellent. It uses IPS display technology and has an 80/80/80/80 viewing angle, allowing users to read the screen at a flexible and free viewing angle without visual blur.

Technical Parameters:

Technical Parameter	Description
Liquid Crystal Display Panel Type	1.3" TFT
Operating Temperature	-20 ~ +70°C
Storage Temperature	-30 ~ +80°C
Viewing Direction	80/80/80/80
FPC Pins	12pin
Resolution	240*240 Dots
Color	262K/65K

Luminance	300 Cd/m2
Display Mode	IPS/Transmissive/Normally Black
Interface	SPI
Sunlight Readable TFT Display	Yes



Applications:

Chenghao Optoelectronics' LCD display module product model CH130QV05A is a high-quality circular LCD display screen. This product is widely used in various industries and has a wide range of application occasions and scenarios.

- (1) Smart wearable devices: smart watches, VR glasses
- (2) Medical equipment: forehead thermometers, blood pressure monitors, heart rate monitoring equipment, etc.
- (3) Instruments: temperature scanners, smart water meters, air quality monitors, etc.
- (4) Industrial equipment: For example, it can be installed on monitors that monitor equipment voltage, current, temperature and other equipment information.
- (5) Household appliances: smart rice cookers, smart coffee machines, smart fans, etc.
- (6) Military equipment: gun scopes, etc.



Shenzhen ChengHao Optoelectronic Co., Ltd.



+86 755-27806536



add@chenghaolcm.com



chenghaolcd.com

7th floor, building C5, Hengfeng Industrial City, Hangcheng street, Bao'an District, Shenzhen