



1.3 Inch IPS Transmissive Black Screen SPI LCD Display Module with 240*240 Dots Resolution

Our Product Introduction

for more products please visit us on chenghaolcd.com

Basic Information

- Place of Origin: China Shenzhen
- Brand Name: Chenghao Optoelectronic
- Certification: CE RoHS FCC
- Model Number: CH130QV05A
- Minimum Order Quantity: 100 pcs
- Packaging Details: All the products are packed in right way to keep it safe. For small sizes of products we use tray + carton, For bigger sizes we use foam slot + carton. we also design packages according to customers' requirements
- Delivery Time: 3~7 Days
- Payment Terms: TT or Others
- Supply Ability: 50000000 pcs/month

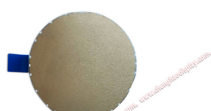


Product Specification

- Product Name: 1.3 Inch Small Lcd Display Module
- Color: 262K/65K
- Operating Temperature: -20 ~ +70°C
- Viewing Direction: 80/80/80/80
- Resolution: 240*240 Dots
- Luminance: 300 Cd/m2
- Interface: SPI
- Display Mode: IPS/Transmissive/Normally Black
- FPC Pins: 12pin
- Highlight: 1.3 Inch LCD Display Module,
Black Screen LCD Display Module,
240*240 Dots LCD Display Module



More Images





Product Description

Product Description:

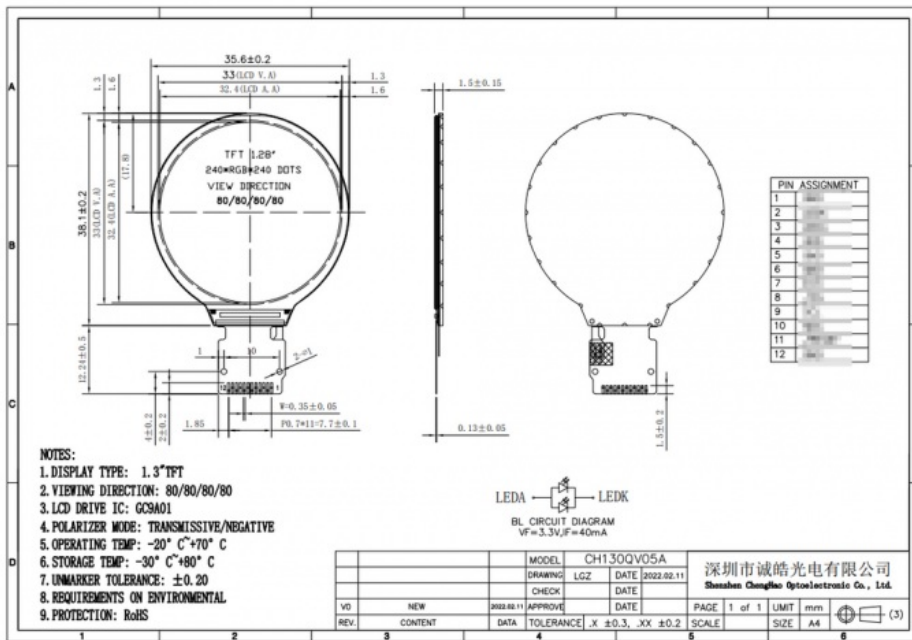
Chenghao Optoelectronic offers a small-size circular LCD screen, the CH130QV05A, that is customized to meet the needs of customers' wearable devices. This screen has a circular active area size of 1.3 inches. It is capable of displaying videos and images with a resolution of 240*240.

The CH130QV05A has several features that make it stand out. It utilizes IPS/Transmissive/Normally Black display mode, providing a viewing angle of 80/80/80/80 free viewing angle. It has a screen brightness of 300 cd/m2 and can operate in temperatures ranging from -20°C to +70°C.

This small-size circular LCD screen also supports SPI interface, allowing for easy communication with other devices. It is RoHS-compliant and halogen-free, making it an environmentally friendly option for customers.

Features:

- (1) The CH130QV05A mini display screen stands out because of its unique appearance. Its 1.3 inch circular display screen makes it compatible for a wide range of devices, including smart wearables and portable mobile devices.
- (2) This Mini LCD screen supports a wide temperature range that allows it to run smoothly for more than 30,000 hours in an environment ranging from -20 to 70 degrees Celsius. This feature enables this display to be used in devices that experience rapid temperature changes.
- (3) This circular LCD screen employs IPS display technology with a viewing angle of 80/80/80/80. The display screen maintains a clear and vivid picture even when viewed from various angles, without any visual distortion.



Technical Parameters:

Product Attribute	Value
Product Name	Custom LCD Display Module
Display Type	1.3" TFT
Viewing Direction	80/80/80/80
Resolution	240*240 Dots
Interface	SPI
Color	262K/65K
Display Mode	IPS/Transmissive/Normally Black

Luminance	300 Cd/m2
Storage Temperature	-30 ~ +80°C
Operating Temperature	-20 ~ +70°C
FPC Pins	12pin
Product Type	Active Matrix LCD Display Module

Applications:

The CH130QV05A LCD display module is widely used in custom LCD display applications where the display needs to be designed according to specific requirements. It is suitable for medical devices, industrial control systems, automotive applications, etc. The product is designed to withstand a wide operating temperature range of -30 ~ +80°C, suitable for use in harsh environments.

The CH130QV05A LCD display module is a sunlight-readable LCD display that displays clear and vivid images, making it ideal for outdoor use. Its 80/80/80 viewing orientation ensures that the display can be seen from any angle. With a resolution of 240*240 dots and a color depth of 262K/65K, this 1.3-inch TFT display is ideal for displaying high-quality images, videos, and graphics.



The CH130QV05A LCD display module is also ideal for use in sunlight-readable LCD display applications. Its high brightness and contrast make it easy to read even in bright sunlight, making it ideal for use in devices such as smart watches, running counters, handheld scanners, etc.

In conclusion, the CH130QV05A LCD display module is a versatile product that can be used in a variety of occasions and scenarios. It is a must-have for anyone looking for a high-quality, durable and reliable custom TFT display.

FAQ

(1) What is Chenghao Optoelectronic?

Chenghao Optoelectronic is a company that focuses on the research and development, production and sales of display modules, providing high-quality display module products and solutions.

(2) What products does Chenghao Optoelectronic provide?

Our products include TFT LCD displays, mono LCD displays, OLED displays and related technical services.

(3) What industries are Chenghao Optoelectronic's products suitable for?

Our products are widely used in many fields such as industry, medical, home appliances, artificial intelligence, commercial equipment, military equipment, etc.

(4) How to get a quote for Chenghao Optoelectronic's products?

You can fill in the inquiry form on our official website or contact the customer service team directly to get a quote.

(5) Does Chenghao Optoelectronic provide after-sales service?

Yes, we provide comprehensive after-sales service, including product warranty, technical support and maintenance services.

(6) How do I choose the optoelectronic product that is suitable for my project?

Our sales team can provide professional advice based on your project requirements to help you choose the most suitable product.

(6) Does Chenghao Optoelectronic provide customized services?

Yes, we can provide customized solutions according to the specific needs of customers.

(7) How is the product quality of Chenghao Optoelectronic guaranteed?

We strictly follow international quality standards and have passed multiple certifications to ensure that each product has been rigorously tested.

(8) How to contact Chenghao Optoelectronic?

You can contact us through the contact information on our website, email or phone, and we will respond to your inquiry in a timely manner.



Shenzhen ChengHao Optoelectronic Co., Ltd.



+86 755-27806536



add@chenghaolcm.com



chenghaolcd.com

7th floor, building C5, Hengfeng Industrial City, Hangcheng street, Bao'an District, Shenzhen