



IPS LCD Display 1000 Cd/m2 High Brightness With -30~ 80C Wide Operating Temperature Range

Our Product Introduction

for more products please visit us on chenghaolcd.com

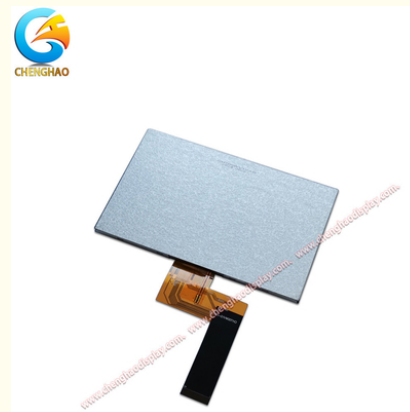
Basic Information

- Place of Origin: China, Shenzhen
- Brand Name: Chenghao Optoelectronic
- Certification: CE RoHS
- Model Number: CH700WV10A
- Minimum Order Quantity: 100 Pcs
- Packaging Details: All the products are packed in right way to keep it safe. For small sizes of products we use tray + carton, For bigger sizes we use foam slot + carton. we also design packages according to customers' requirements
- Delivery Time: 7-15 working days
- Supply Ability: 300Kpcs/month



Product Specification

- Display Mode: IPS/Transmissive/Normally Black
- Storage Temperature: -30 ~ +80°C
- Display Interface: RGB
- Resolution: 800*480 Dots
- Operating Temperature: -20 ~ +70°C
- Luminance: 1000 Cd/m2
- Viewing Direction: 85/85/85/85
- Color: 16.7M
- Highlight: **high Brightness IPS LCD Display , 1000 Cd/m2 IPS LCD Display**



More Images



Product Description

Product Description:

Product Description: Chenghao CH700WV10

The Chenghao CH700WV10 is a high-quality TFT LCD display that features a full-color, active display area of 7 inches diagonally. It is designed to output high-quality images or videos with a resolution of 800*480 and 16M colors, providing an excellent viewing experience for the user.

One of the most noteworthy features of the display is its excellent temperature performance. It can operate smoothly within a wide temperature range of -20 ~ +70°C, which makes it ideal for use in a variety of settings. Additionally, with a storage temperature range of -30 ~ +80°C, users can feel confident in its ability to withstand harsh environments.

The CH700WV10 has a lifespan of up to 50,000 hours. It features IPS display technology, which provides an optimal viewing angle of 85/85/85/85, ensuring users can clearly see the display from multiple vantage points. The display supports an RGB interface, and the FPC pin count is 40 pins.

This display also meets RoHS standards and is halogen-free, making it not only an excellent performer but also an environmentally conscious choice.

Features:

Sunlight Readable Display

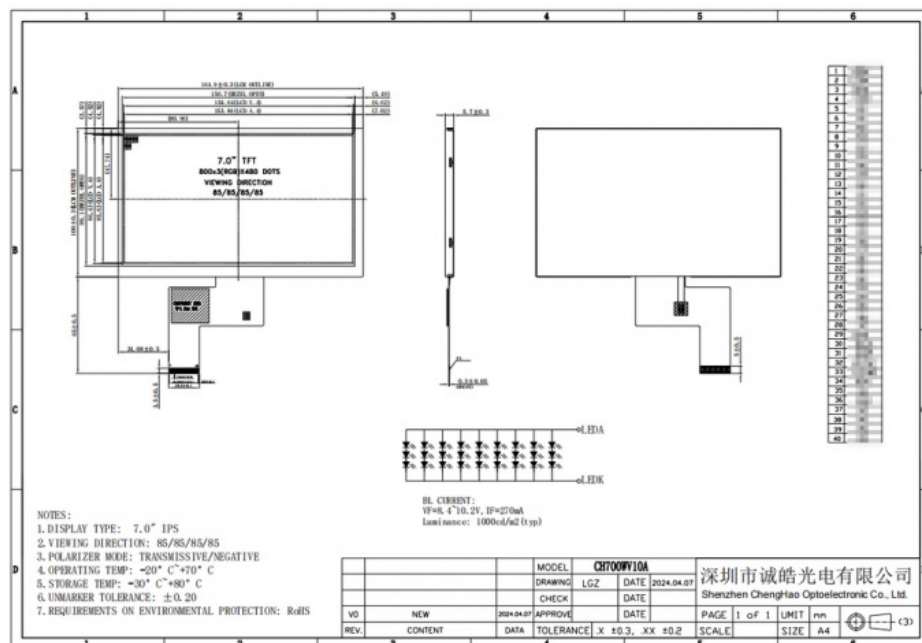
The Chenghao CH700WV10 LCD screen has high brightness, making it an ideal solution for outdoor applications. With a brightness of up to 1000 cd/m2, the display is clearly readable even in sunlight, making it ideal for use in bright outdoor environments.

Wide Temperature Display

The high-brightness TFT LCD display is designed to operate reliably in extreme temperature conditions, with an ambient temperature range of -20 ~ +70°C. It can also be safely stored in an environment of -30 ~ +80°C. This temperature tolerance is especially important for devices operating in environments with rapid temperature changes.

Free Viewing Direction Display

This LCD display is equipped with IPS/Transmissive/Normally Black display modes, and the display has a viewing angle of 85/85/85/85 full Viewing Direction. This means that users can get a very good visual experience when viewing the display from any direction.



Technical Parameters:

Storage Temperature	-30 ~ +80°C
Luminance	1000 Cd/m2
Operating Temperature	-20 ~ +70°C
Display Mode	IPS/Transmissive/Normally Black

Display Type	7.0" IPS
Display Interface	RGB
Color	16.7M
Viewing Direction	85/85/85/85
Resolution	800*480 Dots

Applications:

Chenghao CH700WV10 offers outstanding performance at an affordable price. It is a 7-inch color IPS display that can be used for a wide range of applications, including industrial control terminal equipment, vehicle-mounted GPS navigation, medical instruments and equipment, and smart home devices. This display is both versatile and cost-effective, making it an excellent option for a wide range of users.



FAQ:

Q: What is the brand name of this LCD display?

A: The brand name is Chenghao Optoelectronic.

Q: What is the model number of this LCD display?

A: The model number is CH700WV10A.

Q: Where is this LCD display manufactured?

A: This LCD display is manufactured in Shenzhen, China.

Q: Does this LCD display come with any certifications?

A: Yes, it comes with CE and RoHS certifications.

Q: What is the minimum order quantity for this LCD display?

A: The minimum order quantity is 100 pcs.

Q: How is this LCD display packaged for shipping?

A: All the products are packed in the right way to keep them safe. For small sizes of products, we use tray + carton. For bigger sizes, we use foam slot + carton. We also design packages according to customers' requirements.

Q: What is the delivery time for this LCD display?

A: The delivery time is 7-15 working days.

Q: What is the supply ability of this LCD display?

A: The supply ability is 300Kpcs/month.



Shenzhen ChengHao Optoelectronic Co., Ltd.



+86 755-27806536



add@chenghaolcm.com



chenghaolcd.com

7th floor, building C5, Hengfeng Industrial City, Hangcheng street, Bao'an District, Shenzhen