



Sunlight Readable LCD Display Module 11.9 Inch 440x1920 40pins MIPI Interface

Our Product Introduction

for more products please visit us on chenghaolcd.com

Basic Information

- Place of Origin: China, Shenzhen
- Brand Name: Chenghao Optoelectronic
- Certification: CE RoHS
- Model Number: CH119HD01A
- Minimum Order Quantity: 100 Pcs
- Packaging Details: All the products are packed in right way to keep it safe. For small sizes of products we use tray + carton, For bigger sizes we use foam slot + carton. we also design packages according to customers' requirements
- Delivery Time: 7-15 working days
- Supply Ability: 300Kpcs/month



Product Specification

- Product Name: Sunlight Readable LCD Display Module
- Display Mode: IPS/Transmissive/Normally Black
- Luminance: 800 Cd/m2
- Backlight: 24 Pcs White LED
- Module Interface: MIPI
- Resolution: 440x1920 Dots
- Color: 16.7M
- Viewing Direction: 80/80/80/80
- Operating Temperature: -20 ~ +70 °C
- Highlight: Sunlight Readable LCD Display Module, 40pins LCD Display Module, 440x1920 LCD Display Module



More Images



Product Description

Product Description:



CH119HD01A is a long strip color LCD screen customized by Chenghao optoelectronic for customers. Its unique appearance is completely customized according to the customer's design drawings.

The display has a color active display area with a diagonal measurement of 11.9 inches, which can display videos or images with 440x1920 pixels and 16M colors. In order to meet customers' needs for outdoor use, we not only use IPS display technology for

this display, but also install a high-brightness backlight component that can produce 800cd/m2 luminance, which makes the display support full viewing angle and sunlight readable, ensuring that users can get a good visual experience when reading the screen at any viewing angle in outdoor environments.

In addition, the design operating temperature of the display is $-20 \sim +70^{\circ}\text{C}$, and the Storage Temperature is $-30 \sim +80^{\circ}\text{C}$.



which means that the display has a relatively strong ability to adapt to ambient temperature, ensuring that it can cope with some extreme working conditions.

RoHS compliant and halogen-free.

Features:

CH119HD01A is a customized 11.9-inch TFT display manufactured by Chenghao Optoelectronic.

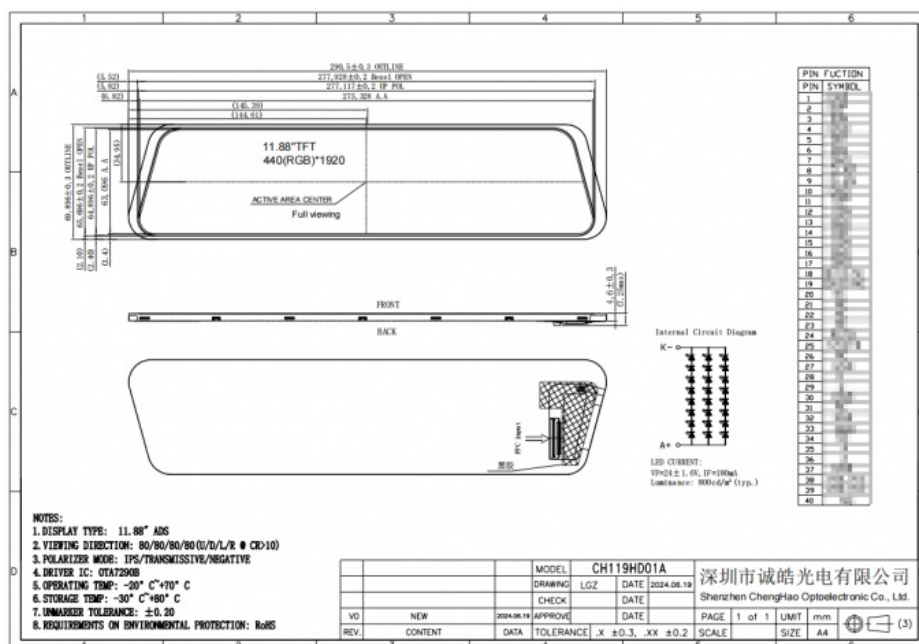
This display offers a range of attractive features:

The display's maximum color picture quality output of 440x1920 allows it to reproduce vivid and clear images, providing an excellent viewing experience.

The TFT display's backlight brightness is 800 cd/m2 luminance, making it bright enough for clear display even in general outdoor environments.

The TFT LCD screen is designed with strong resistance to extreme temperatures, with the ability to operate smoothly in environments ranging between -20 ~ +70°C.

The display panel uses IPS/transmissive/normally black display mode, which broadens the optimal viewing angle of the display panel to 80/80/80/80. This ensures that users can enjoy a clear picture experience when viewing the content display from any angle.



Technical Parameters:

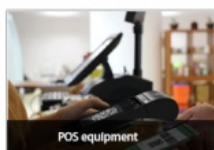
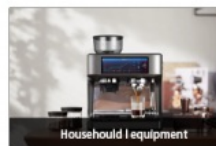
LCD Touch Screen	IPS TFT LCD
Color	16.7M
Viewing Direction	80/80/80/80
Module Interface	MIPI
Storage Temperature	-30 ~ +80 °C
FPC Pin Number	40pins
Operating Temperature	-20 ~ +70 °C
Backlight	24 Pcs White LED
Display Mode	IPS/Transmissive/Normally Black
Resolution	440x1920 Dots

Applications:

Chenghao Optoelectronics has launched a customized color LCD screen CH119HD01A. The screen is designed to be installed on the rearview mirror of the car, and its appearance and functional parameters are completely customized according to the reserved mounting holes of the rearview mirror and the cab environment.

One of the most attractive features of this product is that Chenghao Optoelectronics can provide tailor-made modifications and customizations according to the preferences and requirements of customers. The company can install a touch screen, customize the interface, and adjust the backlight brightness for the CH119HD01A according to customer requirements.

With its excellent adaptability and versatility, the CH119HD01A can be applied to various fields such as artificial intelligence, IoT devices, home appliances, medical equipment, industrial equipment, and automotive transportation.



FAQ:

Q: What is the brand name of this IPS LCD Display?

A: The brand name of this IPS LCD Display is Chenghao Optoelectronic.

Q: What is the model number of this IPS LCD Display?

A: The model number of this IPS LCD Display is CH119HD01A.

Q: Where is this IPS LCD Display manufactured?

A: This IPS LCD Display is manufactured in China, Shenzhen.

Q: Does this IPS LCD Display have any certifications?

A: Yes, this IPS LCD Display has CE and RoHS certifications.

Q: What is the minimum order quantity for this IPS LCD Display?

A: The minimum order quantity for this IPS LCD Display is 100 pcs.

Q: How is this IPS LCD Display packaged?

A: All the products are packed in the right way to keep it safe. For small sizes of products, we use tray + carton, for bigger sizes we use foam slot + carton. We also design packages according to customers' requirements.

Q: What is the delivery time for this IPS LCD Display?

A: The delivery time for this IPS LCD Display is 7-15 working days.

Q: What is the supply ability for this IPS LCD Display?

A: The supply ability for this IPS LCD Display is 300Kpcs/month.



Shenzhen ChengHao Optoelectronic Co., Ltd.



+86 755-27806536



add@chenghaolcm.com



chenghaolcd.com

7th floor, building C5, Hengfeng Industrial City, Hangcheng street, Bao'an District, Shenzhen