



1920x440 HD Long Strip TFT LCD Display 11.9" IPS Screen For Rearview Mirror Screen

Our Product Introduction

for more products please visit us on chenghaolcd.com

Basic Information

- Place of Origin: China, Shenzhen
- Brand Name: Chenghao Optoelectronic
- Certification: CE RoHS
- Model Number: CH119HD01A
- Minimum Order Quantity: 100 Pcs
- Packaging Details: All the products are packed in right way to keep it safe. For small sizes of products we use tray + carton, For bigger sizes we use foam slot + carton. we also design packages according to customers' requirements
- Delivery Time: 7-15 working days
- Supply Ability: 300Kpcs/month



Product Specification

- Product Name: Long Strip Tft Lcd Display
- Display Mode: IPS/Transmissive/Normally Black
- Luminance: 800 Cd/m2
- Backlight: 24 Pcs White LED
- Viewing Direction: 80/80/80/80
- Storage Temperature: -30 ~ +80 °C
- Resolution: 440x1920 Dots
- FPC Pin Number: 40pins
- Module Interface: MIPI
- Highlight: Rearview Mirror Screen Tft Lcd Display, 1920x440 HD Tft Lcd Display, 11.9" IPS TFT LCD Screen



More Images



Product Description

Product Description:

CH119HD01A is a long strip color LCD screen customized by Chenghao Optoelectronics to meet the specific needs of customers. This product has a unique design and can be tailored to the specifications required by customers.

The display area of this LCD screen has a diagonal length of 11.9 inches, and the display area is capable of displaying images and videos at a resolution of 440x1920 pixels. In addition, in order to provide the best user experience in outdoor environments, we have adopted IPS display technology for this LCD screen and equipped it with a high brightness backlight component that can produce 800cd/m2 Luminance, which makes the display support full viewing angle and Sunlight Readable.

The product is designed to operate in a temperature range of -20 ~ +70°C and a storage temperature range of -30 ~ +80°C. This feature allows the display to easily adapt to extreme temperature conditions and ensure uninterrupted operation even in the harshest working environments.

In addition, CH119HD01A is RoHS compliant and halogen-free, which means that the product is manufactured with the best materials and processes on the market while protecting the environment.

Features:

Chenghao Optoelectronic is providing a customized TFT display called CH119HD01A that measures 11.9 inches. This display is designed with a range of features that make it stand out in the market.

The first feature of this display is its high-definition picture quality. It supports color picture quality output of up to 440 x 1920, resulting in vivid and clear images on the screen.

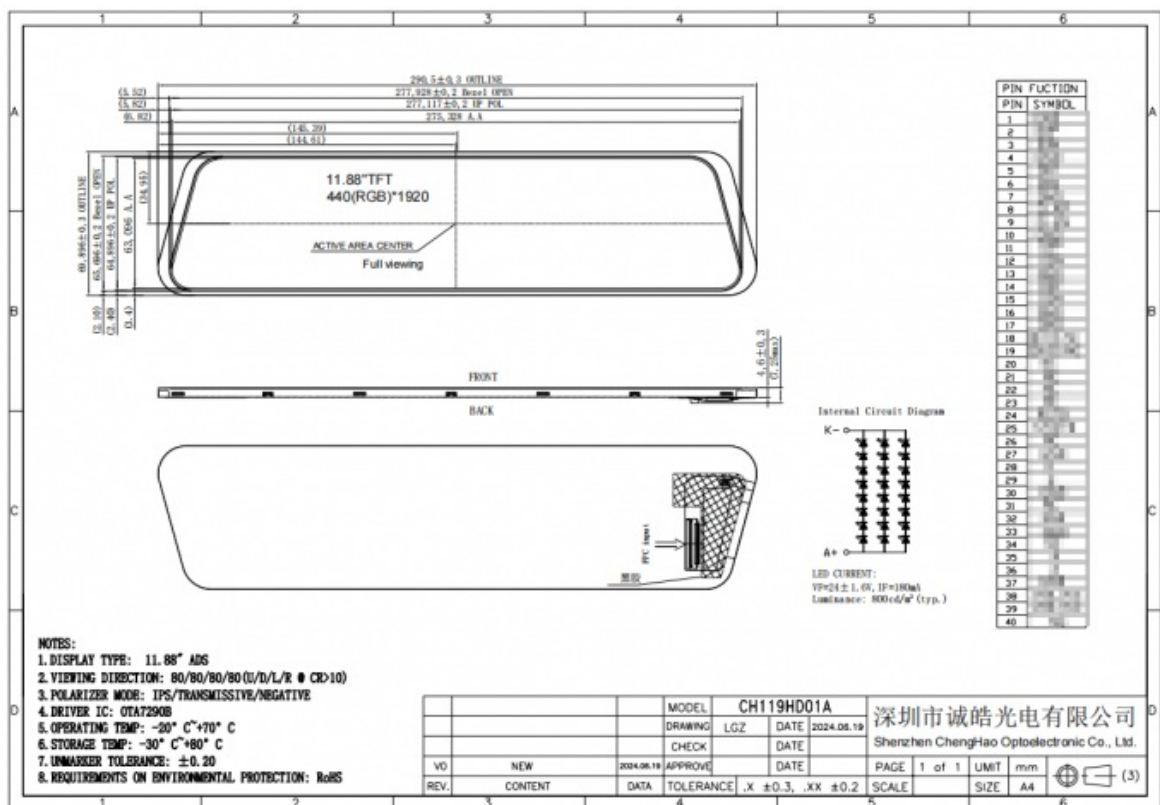
The second feature of the CH119HD01A is its sunlight readability. With a backlight brightness of 800 cd/m2 luminance, this display is bright enough to remain clear even in outdoor environments.

The third key feature of this display is its ability to withstand wide temperature ranges. The TFT LCD screen has been designed to resist temperatures between -20°C to +70°C, allowing it to function smoothly in extreme working conditions.

Finally, the CH119HD01A has a full viewing angle feature that extends the best viewing angle of the display panel to 80/80/80/80. This means that users can enjoy clear image quality experience when viewing content displayed on the screen from any angle.

Technical Parameters:

| | |
|-----------------------|---------------------------------|
| Display Mode | IPS/Transmissive/Normally Black |
| Operating Temperature | -20 ~ +70 °C |
| Viewing Direction | 80/80/80/80 |
| FPC Pin Number | 40pins |
| Resolution | 440x1920 Dots |
| Backlight | 24 Pcs White LED |
| Color | 16.7M |
| Module Interface | MIPI |
| Luminance | 800 Cd/m2 |
| Storage Temperature | -30 ~ +80 °C |



This Sunlight Readable display is an IPS LCD screen module that uses a Module Interface of MIPI. It has a resolution of 440x1920 Dots and a Luminance of 800 Cd/m2. The display can operate within a temperature range of -20 ~ +70 °C and can be stored at temperatures ranging from -30 ~ +80 °C. It has a viewing direction of 80/80/80/80 and a color depth of 16.7M. The FPC Pin Number is 40pins and it has a backlight consisting of 24 Pcs White LED.

Applications:

Customized LCD Screen - CH119HD01A

Chenghao Optoelectronic provides customers with a customized color LCD screen, known as CH119HD01A. This screen is specifically designed to be installed on the rearview mirror of a car. The physical appearance and functional parameters of the display are tailored to fit the installation holes of the rearview mirror and the cab environment.

Moreover, clients can request further customization options from Chenghao Optoelectronic for this LCD screen. Customizable options include interface customization, backlight brightness adjustment, touch panel installation, and more.

This versatile LCD screen has vast applications in various industries such as automotive transportation, industrial equipment, medical equipment, household appliances, artificial intelligence, internet of things equipment, and others.



FAQ:

Q: What is the brand name of the IPS LCD Display?

A: The brand name of the IPS LCD Display is Chenghao Optoelectronic.

Q: What is the model number of the IPS LCD Display?

A: The model number of the IPS LCD Display is CH119HD01A.

Q: Where is the IPS LCD Display manufactured?

A: The IPS LCD Display is manufactured in Shenzhen, China.

Q: What certifications does the IPS LCD Display have?

A: The IPS LCD Display has CE and RoHS certifications.

Q: What is the minimum order quantity for the IPS LCD Display?

A: The minimum order quantity for the IPS LCD Display is 100 pcs.

Q: How is the IPS LCD Display packaged?

A: All the products are packed in the right way to keep them safe. For small sizes of products, we use tray + carton, for bigger sizes we use foam slot + carton. We also design packages according to customers' requirements.

Q: What is the delivery time for the IPS LCD Display?

A: The delivery time for the IPS LCD Display is 7-15 working days.

Q: What is the supply ability of the IPS LCD Display?

A: The supply ability of the IPS LCD Display is 300Kpcs/month.



Shenzhen ChengHao Optoelectronic Co., Ltd.



+86 755-27806536



add@chenghaolcm.com



chenghaolcd.com

7th floor, building C5, Hengfeng Industrial City, Hangcheng street, Bao'an District, Shenzhen