



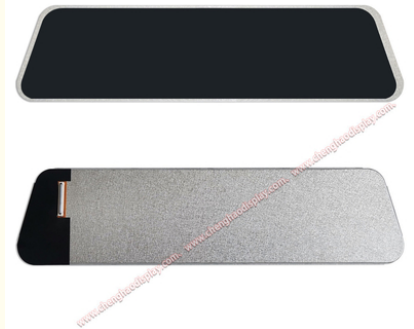
Wholesale Custom 11.9 Inch Rearview Mirror Lcd Screen 440x1920 Resolution with MIPI Interface

Our Product Introduction

for more products please visit us on chenghaolcd.com

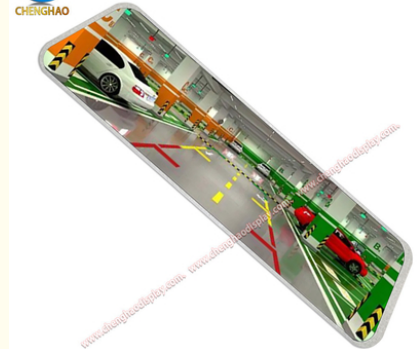
Basic Information

- Place of Origin: China, Shenzhen
- Brand Name: Chenghao Optoelectronic
- Certification: CE RoHS
- Model Number: CH119HD01A
- Minimum Order Quantity: 100 Pcs
- Packaging Details: All the products are packed in right way to keep it safe. For small sizes of products we use tray + carton, For bigger sizes we use foam slot + carton. we also design packages according to customers' requirements
- Delivery Time: 7-15 working days
- Supply Ability: 300Kpcs/month



Product Specification

- Product Name: 11.9 Inch Rearview Mirror Lcd Screen
- Operating Temperature: -20 ~ +70 °C
- Display Mode: IPS/Transmissive/Normally Black
- FPC Pin Number: 40pins
- Module Interface: MIPI
- Backlight: 24 Pcs White LED
- Storage Temperature: -30 ~ +80 °C
- Resolution: 440x1920 Dots
- Color: 16.7M
- Highlight: 440x1920 Rearview Mirror Lcd Screen,
11.9 Inch Rearview Mirror Lcd Screen,
MIPI Interface Rearview Mirror Lcd Screen



Product Description

Product Description:

The CH119HD01A is a long strip color LCD screen developed by Chenghao Optoelectronic for customers. The LCD screen has a unique appearance and can be modified and customized according to customer requirements.

The CH119HD01A LCD screen is equipped with a color active display area with a diagonal length of 11.9 inches, capable of displaying videos or images with 440x1920 pixels and 16 million colors. The IPS display technology combined with the high-brightness backlight component can produce 800cd/m2 brightness while supporting 80/80/80/80 free viewing angles, making the display suitable for outdoor use, ensuring that users can get an excellent visual experience when reading the screen at any angle in outdoor environments.

In addition, the CH119HD01A is designed to operate in a temperature range of -20~+70°C and can be stored at a temperature of -30~+80°C. This enables it to adapt to extreme conditions, thereby providing better performance and service life.

In addition to the above features, the CH119HD01A is also RoHS-compliant and halogen-free, minimizing the impact on the environment.

Features:

CH119HD01A is an 11.9-inch TFT display customized by Chenghao Optoelectronics for customers. It features high-definition picture quality, sunlight readability, wide temperature resistance, and full viewing angle.

(1)High-definition picture quality

The display supports color picture quality output up to 440x1920, which can display vivid and clear images.

(2)Sunlight readability

The backlight brightness of the TFT display is 800 cd/m2, which is enough to clearly view the display in most outdoor environments.

(3)Wide temperature resistance

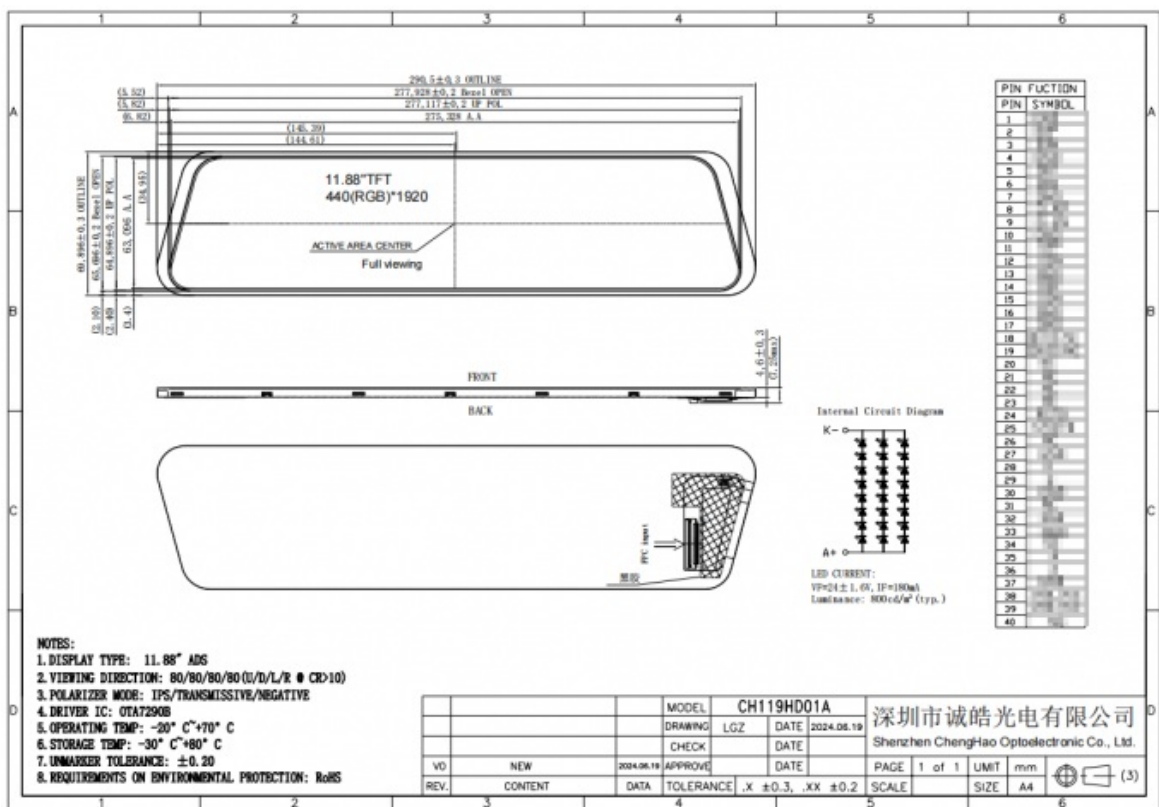
The TFT LCD screen can run smoothly in an environment of -20~+70°C, and can adapt to some extreme working environments.

(4)Full viewing angle

The display panel adopts IPS/transmissive/normally black display mode, which expands the best viewing angle of the display panel to 80/80/80/80, allowing users to get a clear picture experience when viewing the content displayed on the screen from any viewing angle.

Technical Parameters:

Color	16.7M
Luminance	800 Cd/m2
Module Interface	MIPI
Resolution	440x1920 Dots
FPC Pin Number	40pins
Display Mode	IPS/Transmissive/Normally Black
Operating Temperature	-20 ~ +70 °C
Viewing Direction	80/80/80/80
Backlight	24 Pcs White LED
Storage Temperature	-30 ~ +80 °C
Keywords	long strip lcd display/wide screen lcd display/tft lcd display/high brightness lcd display



Applications:

CH119HD01A LCD Screen

CH119HD01A is a color LCD screen that has been exclusively customized by Chenghao Optoelectronic for its clients. The primary use of this LCD screen is to be installed on the rearview mirror of cars. It has been designed and customized keeping in mind the installation holes of the rearview mirror and the cab environment, while also ensuring that it satisfies the functional requirements of the clients.

It is worth mentioning that Chenghao Optoelectronic offers its clients the flexibility to modify and customize the display screen as per their requirements. The supported modifications include customizing the interface, adjusting the backlight brightness, installing the touch panel, etc. In short, they strive to provide the most personalized and optimized experience to their clients. This LCD screen has extensive application across various industries, including automotive transportation, industrial equipment, medical equipment, household appliances, artificial intelligence, Internet of Things equipment, etc. It can provide an optimal viewing experience and contribute to the smooth functioning of various operations across industries.



FAQ:

- Q1: What is the brand name of the IPS LCD Display?**
A1: The brand name of the IPS LCD Display is Chenghao Optoelectronic.
- Q2: What is the model number of the IPS LCD Display?**
A2: The model number of the IPS LCD Display is CH119HD01A.
- Q3: Where is the IPS LCD Display manufactured?**
A3: The IPS LCD Display is manufactured in China, Shenzhen.
- Q4: What certifications does the IPS LCD Display have?**
A4: The IPS LCD Display has CE and RoHS certifications.
- Q5: What is the minimum order quantity for the IPS LCD Display?**
A5: The minimum order quantity for the IPS LCD Display is 100 pcs.
- Q6: How is the IPS LCD Display packaged?**
A6: All the products are packed in the right way to keep them safe. For small sizes of products, we use tray + carton, for bigger sizes, we

use foam slot + carton. We also design packages according to customers' requirements.

Q7: What is the delivery time for the IPS LCD Display?

A7: The delivery time for the IPS LCD Display is 7-15 working days.

Q8: What is the supply ability for the IPS LCD Display?

A8: The supply ability for the IPS LCD Display is 300Kpcs/month.



Shenzhen ChengHao Optoelectronic Co., Ltd.



+86 755-27806536



add@chenghaolcm.com



chenghaolcd.com

7th floor, building C5, Hengfeng Industrial City, Hangcheng street, Bao'an District, Shenzhen