



MIPI LCD Display Module 34 Pins 10.36" 720x1600 Resolution With HX8252A

Our Product Introduction

for more products please visit us on chenghaolcd.com

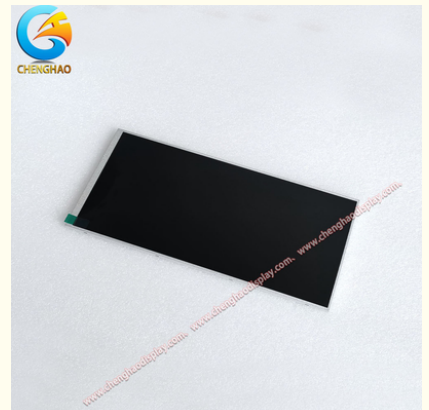
Basic Information

- Place of Origin: China Shenzhen
- Brand Name: Chenghao Optoelectronic
- Certification: CE RoHS FCC
- Model Number: CH104HD01A
- Minimum Order Quantity: 100 pcs
- Packaging Details: All the products are packed in right way to keep it safe. For small sizes of products we use tray + carton, For bigger sizes we use foam slot + carton. we also design packages according to customers' requirements
- Delivery Time: 3~7 Days
- Payment Terms: TT or Others
- Supply Ability: 50000000 pcs/month

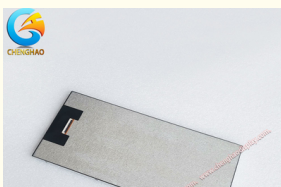


Product Specification

- Product Name: MIPI Lcd Display Module
- FPC Pin Number: 34 Pins
- Display Interface: MIPI
- Display Contrast Ratio: 800:1
- Display Mode: IPS/Transmissive/Normally Black
- Storage Temperature: -30 ~ +80°C
- Display Operating Temp: -20 ~ +70°C
- Color: 16M
- Display Screen Size: 10.4 Inch
- Highlight: MIPI LCD Display Module,
10.36" LCD Display Module,
720x1600 LCD Display Module



More Images





Product Description

Product Description:

Chenghao Optoelectronic CH104HD01A - Full-Color TFT LCD Screen

The CH104HD01A LCD is a high-quality display with a diagonal effective display area of 10.4 inches. It is capable of outputting videos or images with a resolution of 720*1600 and 16M colors.

This LCD uses a high-brightness backlight design with a brightness of up to 700cd/m2, ensuring that users can easily read the content on the display under normal outdoor lighting conditions.



The IPS display technology used in this LCD expands the viewing angle of the screen to 80/80/80/80, allowing users to freely view the screen at any angle without worrying about blurred images caused by limited viewing angles.

Thanks to its wide temperature tolerance, this LCD can operate normally in an environment of -20~+70°C and can be stored normally in an environment of -30~+80°C. In addition, it is RoHS-compliant and halogen-free, ensuring a healthy and safe environment for users.

Features:

Chenghao Optoelectronics CH104HD01A is a cost-effective TFT LCD screen with the following main features:

(1) Sunlight-readable display

This LCD screen is equipped with a backlight component that can produce 700 cd/m2 brightness, allowing the image content output by the display to be easily read by users even in outdoor sunlight. This feature makes it very suitable for outdoor use and use in bright conditions.

(2) Free Viewing Direction

The use of IPS/Transmissive/Normally Black display technology is the main reason why this LCD monitor can support free viewing angles. This means that users do not have to worry about image blur when viewing the screen from various viewing angles.

(3) Wide Temperature

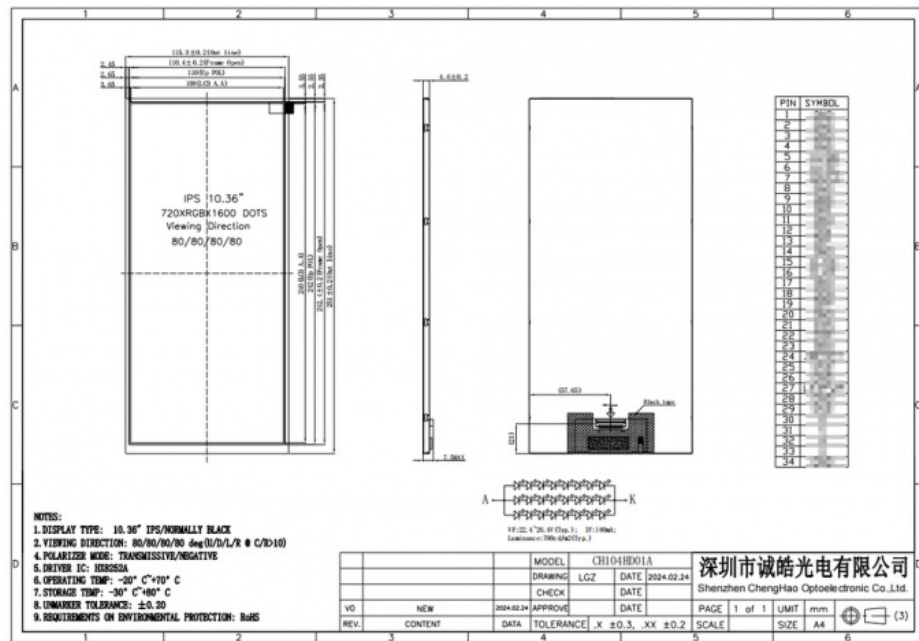
This LCD screen adopts a wide temperature resistance design and can maintain stable operation in an environment of -20~+70, making it suitable for use in rapidly changing environments and working conditions.

(4) High Resolution

The high resolution of 720*1600 ensures clear and bright picture quality output, providing users with a better visual experience when using the screen.

Technical Parameters:

Display Mode	IPS/Transmissive/Normally Black
Display Resolution	720*1600 Dots
Display Contrast Ratio	800:1
Display Brightness	700 Cd/m2
Backlight Type	White LED
Display Screen Size	10.4 Inch
Display Operating Temp	-20 ~ +70°C
FPC Pin Number	34 Pins
Display Life Span	50000H
Storage Temperature	-30 ~ +80°C



Applications:

Chenghao Optoelectronic's CH104HD01A is a 10.4-inch customized LCD screen designed specifically for use in industrial equipment. Its design can be modified and customized according to customer requirements, making it a versatile and widely applicable display solution suitable for various industries. These include but are not limited to automotive equipment, artificial intelligence, home appliances, medical equipment, industrial control, and consumer electronics.



One of the key advantages of the CH104HD01A is its adaptability. Its design can be tailored to meet the unique needs and requirements of each customer to ensure maximum compatibility and functionality with their equipment. Whether it's an adaption for harsh environments or integration with specific systems, the CH104HD01A can be customized accordingly. The CH104HD01A's high-quality display capabilities enable clear and precise imaging, ensuring accurate and reliable readings in various settings. Its durability also makes it ideal for use in demanding and rugged industrial environments.

FAQ:

- Q1: What is the brand name of the LCD Display Module?**
 A1: The brand name of the LCD Display Module is Chenghao Optoelectronic.
- Q2: What is the model number of the LCD Display Module?**

A2: The model number of the LCD Display Module is CH104HD01A.

Q3: Where is the LCD Display Module manufactured?

A3: The LCD Display Module is manufactured in China, in the city of Shenzhen.

Q4: What certifications does the LCD Display Module have?

A4: The LCD Display Module has CE, RoHS, and FCC certifications.

Q5: What are the packaging details of the LCD Display Module?

A5: All the products are packed in the right way to keep them safe. For small sizes of products, we use tray + carton, and for bigger sizes, we use foam slot + carton. We also design packages according to customers' requirements.



Shenzhen ChengHao Optoelectronic Co., Ltd.



+86 755-27806536



add@chenghaolcm.com



chenghaolcd.com

7th floor, building C5, Hengfeng Industrial City, Hangcheng street, Bao'an District, Shenzhen