



## 7-Inch IPS Display 50-Pin RGB 500 Cd/m2 Backlight Luminance For Project Applications

### Our Product Introduction

for more products please visit us on [chenghaolcd.com](http://chenghaolcd.com)

#### Basic Information

- Place of Origin: China
- Brand Name: chenghao optoelectronic
- Certification: CE, ISO9001, Rose, SGS
- Model Number: CH700WS10A-CTA
- Minimum Order Quantity: 100 Pcs
- Packaging Details: All the products are packed in right way to keep it safe. For small sizes of products we use tray + carton, For bigger sizes we use foam slot + carton. we also design packages according to customers' requirements
- Delivery Time: 3~7 Days
- Payment Terms: T/T, AliPay, PayPal
- Supply Ability: 50000000 pcs/month



#### Product Specification

- Product Name: 7-Inch IPS Display
- Resolution: 1024\*600 Dots
- Display Mode: IPS/Transmissive/Normally Black
- Display Interface: RGB
- Touch Type: Capacitive
- Storage Temperature: -30 ~ +80 °C
- Operating Temperature: -20 ~ +70 °C
- Color: 16M
- Backlight Luminance: 500 Cd/m2
- Highlight: 50-Pin IPS Display, 7-Inch IPS Display



#### More Images





## Product Description

### Product Description:



The TFT LCD Display has a touch interface that uses the I2C protocol, making it easy to use with a wide range of microcontrollers and other embedded devices. This touch interface enables users to interact with the display, making it ideal for use in touch-sensitive applications such as kiosks, point-of-sale systems, and gaming devices.

This TFT LCD Display has an operating temperature range of  $-20 \sim +70^{\circ}\text{C}$ , making it suitable for use in a range of environments. Whether you are using it in a cold, outdoor environment or a hot, indoor environment, this TFT LCD Display will operate reliably and consistently.

The TFT LCD Display is equipped with an RGB interface, which allows it to display high-quality images with accurate color reproduction. This display is capable of displaying up to 16.7 million colors, making it ideal for use in applications where color accuracy and vibrancy are important.

This TFT LCD Display is a high-quality display that is perfect for use in a range of applications. Whether you are building a new

product or upgrading an existing one, this display will provide you with the high-quality visuals and touch interface that you need to create a great user experience. So, if you are looking for a reliable and high-quality TFT LCD Display, look no further than this 7 inch screen with 50-pin FPC connector, touch interface, and RGB display interface.

### Features:

Product Name: TFT LCD Display

Touch IC: GT911

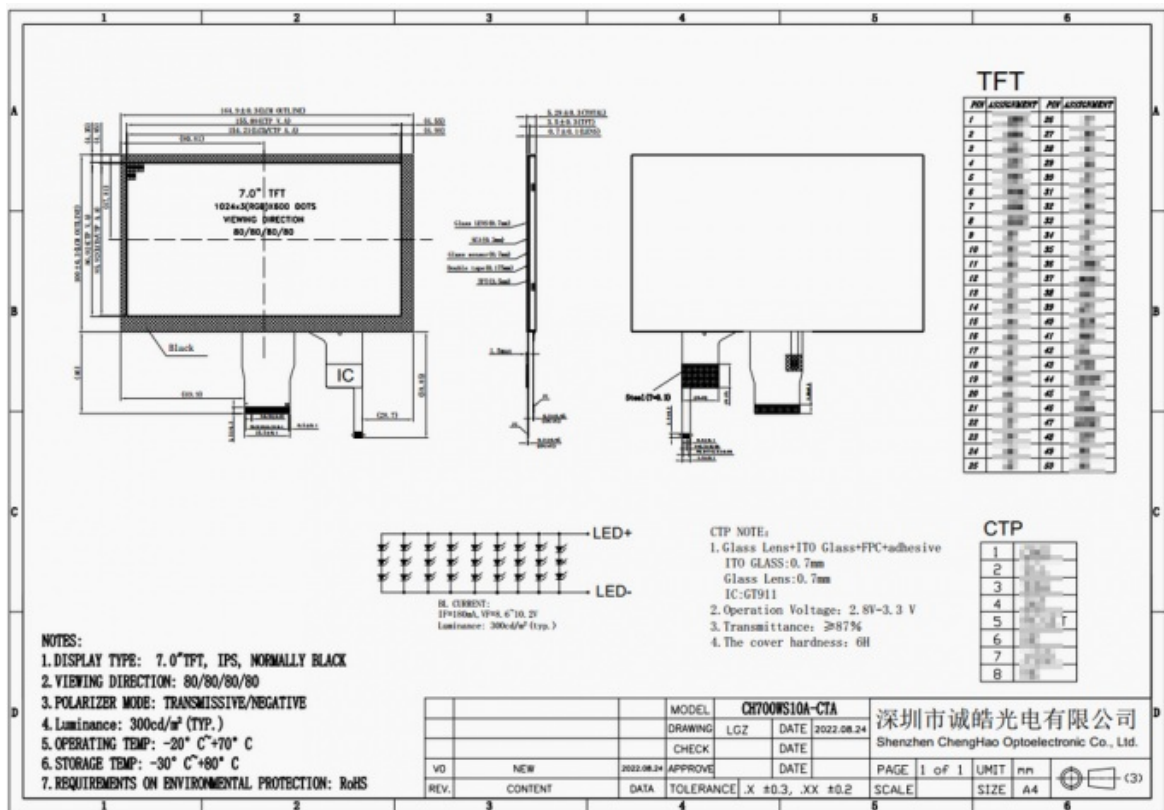
FPC Pin Number: 50pins

Backlight Luminance: 500 Cd/m<sup>2</sup>

Storage Temperature:  $-30 \sim +80^{\circ}\text{C}$

Display Mode: IPS/Transmissive/Normally Black

This TFT LCD Display product is a high-quality tft lcd screen with a touch IC of GT911. The display has 50pins for FPC connection and a backlight luminance of 500 Cd/m<sup>2</sup>. With a storage temperature range of  $-30 \sim +80^{\circ}\text{C}$  and display modes of IPS/Transmissive/Normally Black, this tft screen is a great choice for any tft lcd supplier.



### Technical Parameters:

Display Type	7" TFT + CTP
Color	16M
Touch glass Lens	0.7 mm
FPC Pin Number	50pins
Touch Type	Capacitive
Resolution	1024*600 Dots
Viewing Direction	80/80/80/80
Touch IC	GT911
Backlight Luminance	500 Cd/m2
Touch Interface	I2C

### Applications:

The CH700WS10A-CTA 7-inch TFT LCD touch screen module by Chenghao Optoelectronic is a versatile display solution suitable for various applications . With its high resolution of 1024x600 dots and vibrant color depth of 16.7 million, this module is ideal for industrial control systems, medical equipment, and consumer electronics. The capacitive touch panel and I2C touch interface enable intuitive and responsive touch interactions, making it perfect for interactive displays in kiosks, information terminals, and other touch-sensitive devices. The module's IPS display technology provides full viewing angles, ensuring consistent image quality from different perspectives, which is beneficial for applications requiring wide viewing angles such as digital signage and public information displays. Additionally, the luminance of 500 cd/m2 allows for clear visibility even in varying lighting conditions, making it suitable for outdoor applications or environments with changing light levels.

Whether used in industrial settings, healthcare facilities, or interactive kiosks, the CH700WS10A-CTA offers reliable performance, advanced touch capabilities, and vibrant display quality to enhance user experience and functionality across various industries. Experience the versatility and quality of Chenghao Optoelectronic's TFT LCD touch screen module in your next project or application.

### FAQ:

**Q: What is the brand name of this TFT LCD Display product?**

A: The brand name of this TFT LCD Display product is chenghao optoelectronic.

**Q: What is the model number of this TFT LCD Display product?**

A: The model number of this TFT LCD Display product is CH700WS10A-CTA.

**Q: What is the place of origin of this TFT LCD Display product?**

A: The place of origin of this TFT LCD Display product is China.

**Q: Which certifications does this TFT LCD Display product have?**

A: This TFT LCD Display product has CE, ISO9001, Rose, SGS certifications.

**Q: What is the minimum order quantity for this TFT LCD Display product?**

A: The minimum order quantity for this TFT LCD Display product is 100 pcs.

**Q: How is this TFT LCD Display product packaged?**

A: All the products are packed in right way to keep it safe. For small sizes of products we use tray + carton, For bigger sizes we use foam slot + carton. we also design packages according to customers' requirements.

**Q: What is the delivery time for this TFT LCD Display product?**

A: The delivery time for this TFT LCD Display product is 3~7 days.

**Q: What are the payment terms for this TFT LCD Display product?**

A: The payment terms for this TFT LCD Display product are T/T, AliPay, PayPal.

**Q: What is the supply ability for this TFT LCD Display product?**

A: The supply ability for this TFT LCD Display product is 50000000 pcs/month.



**Shenzhen ChengHao Optoelectronic Co., Ltd.**



+86 755-27806536



add@chenghaolcm.com



chenghaolcd.com

7th floor, building C5, Hengfeng Industrial City, Hangcheng street, Bao'an District, Shenzhen