



## 7-Inch LCD Module 1024x600 Resolution With Touch Panel Support and RGB Display Interface

### Our Product Introduction

for more products please visit us on [chenghaolcd.com](http://chenghaolcd.com)

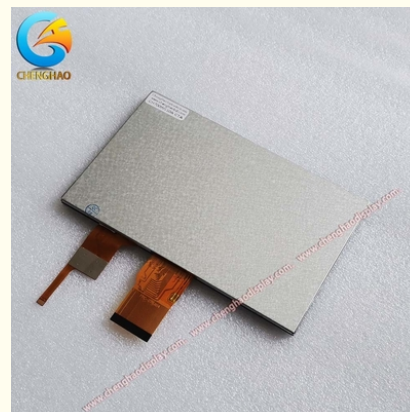
#### Basic Information

- Place of Origin: China
- Brand Name: chenghao optoelectronic
- Certification: CE, ISO9001, Rose, SGS
- Model Number: CH700WS10A-CTA
- Minimum Order Quantity: 100 Pcs
- Packaging Details: All the products are packed in right way to keep it safe. For small sizes of products we use tray + carton, For bigger sizes we use foam slot + carton. we also design packages according to customers' requirements
- Delivery Time: 3~7 Days
- Payment Terms: T/T, AliPay, PayPal
- Supply Ability: 50000000 pcs/month



#### Product Specification

- Product Name: RGB LCD Module
- Touch Glass Lens: 0.7 Mm
- Display Interface: RGB
- Display Type: 7" TFT + CTP
- Resolution: 1024\*600 Dots
- Backlight Luminance: 500 Cd/m2
- Color: 16M
- Display Mode: IPS/Transmissive/Normally Black
- Touch Type: Capacitive
- Highlight: RGB Display Interface LCD Module, 7-Inch LCD Module, 1024x600 LCD Module



#### More Images





## Product Description

### Product Description:

Introducing the CH700WS10A-CTA 7-inch TFT LCD touch screen module by Chenghao Optoelectronic. This module features a high-resolution display with 1024x600 dots, providing crisp and clear visuals for various applications. The display mode is IPS/Transmissive/Normally Black, offering excellent color reproduction and viewing angles. With a color depth of 16.7 million, images and graphics are vibrant and true to life. The luminance of 500 cd/m<sup>2</sup> ensures bright and easily readable content in different lighting conditions.

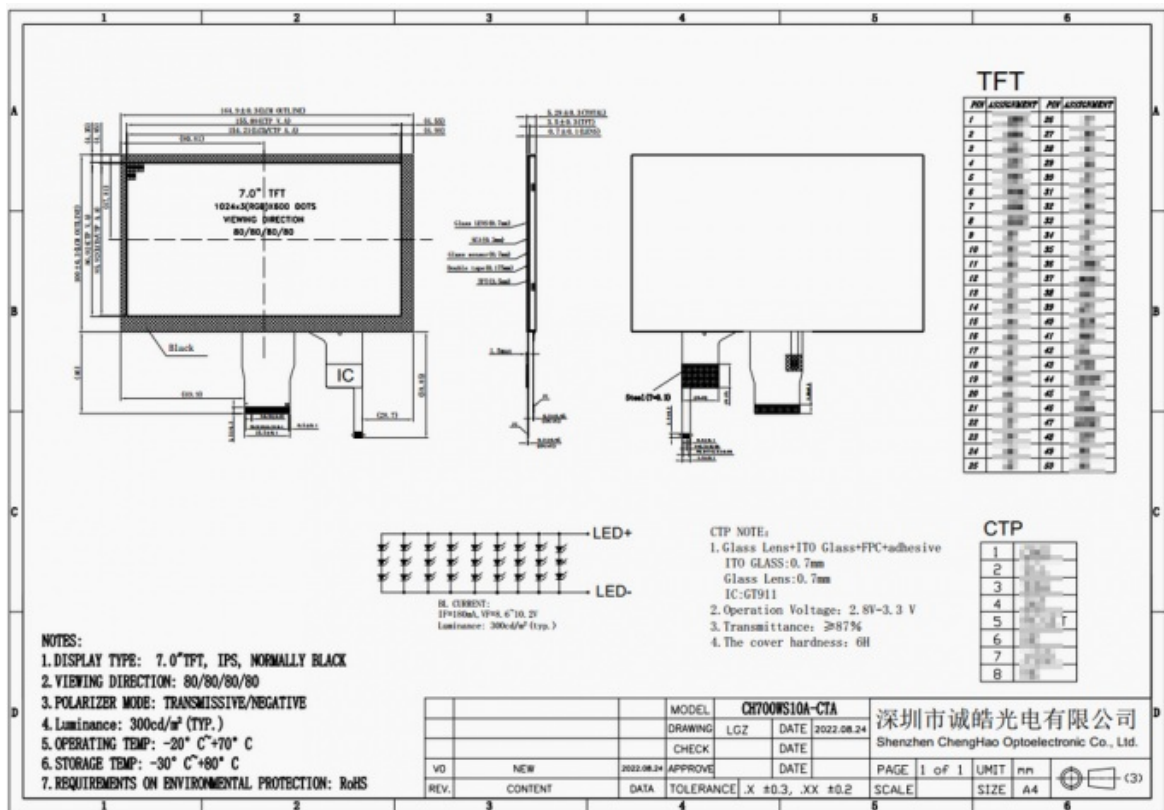
Equipped with a capacitive touch panel and I2C touch interface, this module allows for responsive and intuitive touch interactions. The viewing direction of 80/80/80/80 ensures consistent image quality from various angles, making it suitable for a wide range of applications.

Whether used in industrial control systems, medical devices, or consumer electronics, the CH700WS10A-CTA offers a reliable and high-quality display solution that meets the diverse needs of different industries. Experience the combination of advanced technology and superior performance with Chenghao Optoelectronic's CH700WS10A-CTA TFT LCD touch screen module.



### Features:

Product Name: TFT LCD Display  
Display Type: TFT LCD  
Size: 7 inch LCD  
Touch Glass Lens: 0.7 mm  
Touch IC: GT911  
Backlight Luminance: 500 Cd/m<sup>2</sup>  
Display Interface: RGB  
Touch Interface: I2C



### Technical Parameters:

Display Type	7" TFT + CTP
Display Interface	RGB
Backlight Luminance	500 Cd/m2
Color	16M
Operating Temperature	-20 ~ +70 °C
Viewing Direction	80/80/80/80
Touch IC	GT911
Resolution	1024*600 Dots
FPC Pin Number	50pins
Touch Interface	I2C

### Applications:

Chenghao Optoelectronic is a leading supplier of TFT LCD displays and offers a diverse range of products. The CH700WS10A-CTA is a 7 inch TFT LCD display with a 1024\*600 resolution and 16M color. The product has been certified by CE, ISO9001, Rose, SGS, ensuring its quality and reliability. The minimum order quantity for this product is 100 pcs and the supply ability is 50000000 pcs/month.

The CH700WS10A-CTA TFT LCD display is suitable for various occasions and scenarios, such as:

**Industrial Automation:** The display can be used for industrial automation, such as in control panels, human-machine interfaces, and production monitoring systems. The viewing direction of 80/80/80/80 and operating temperature range of -20 ~ +70 °C make it suitable for harsh industrial environments.

**Gaming:** The high resolution and color depth of the CH700WS10A-CTA make it ideal for gaming applications, providing a clear and immersive gaming experience.

**Retail:** The display can be used in retail environments, such as in-store displays, point of sale systems, and digital signage. The touch IC GT911 allows for interactive experiences, enhancing the customer experience.

**Medical:** The CH700WS10A-CTA can be used in medical equipment, such as patient monitors and diagnostic devices. The high resolution and color depth ensure accurate and clear imaging.

**Automotive:** The display can be used in automotive applications, such as in-car entertainment systems and rear-view cameras. The rugged design and wide operating temperature range make it suitable for use in vehicles.

In conclusion, the CH700WS10A-CTA TFT LCD display is a versatile product that can be used in various industries and settings. Chenghao Optoelectronic is a reliable supplier of TFT LCD displays and provides high-quality products for their customers.

### FAQ:

**Q: What is the brand name of this TFT LCD Display?**

A: The brand name of this TFT LCD Display is chenghao optoelectronic.

**Q: What is the model number of this TFT LCD Display?**

A: The model number of this TFT LCD Display is CH700WS10A-CTA.

**Q: Where is this TFT LCD Display manufactured?**

A: This TFT LCD Display is manufactured in China.

**Q: What are the certifications of this TFT LCD Display?**

A: This TFT LCD Display is certified with CE, ISO9001, Rose, and SGS.

**Q: What is the minimum order quantity for this TFT LCD Display?**

A: The minimum order quantity for this TFT LCD Display is 100 pieces.

**Q: What are the packaging details for this TFT LCD Display?**

A: All the products are packed in the right way to keep them safe. For small sizes of products, we use tray + carton. For bigger sizes, we use foam slot + carton. We also design packages according to customers' requirements.

**Q: What is the delivery time for this TFT LCD Display?**

A: The delivery time for this TFT LCD Display is 3~7 days.

**Q: What are the payment terms for this TFT LCD Display?**

A: The payment terms for this TFT LCD Display are T/T, AliPay, and PayPal.

**Q: What is the supply ability for this TFT LCD Display?**

A: The supply ability for this TFT LCD Display is 50000000 pcs/month.



**Shenzhen ChengHao Optoelectronic Co., Ltd.**



+86 755-27806536



add@chenghaolcm.com



chenghaolcd.com

7th floor, building C5, Hengfeng Industrial City, Hangcheng street, Bao'an District, Shenzhen