



7-Inch Capacitive Touch LCD Screen Resolution 1024x600 Display for FPC Pin Number 50pins

Our Product Introduction

for more products please visit us on chenghaolcd.com

Basic Information

- Place of Origin: China
- Brand Name: chenghao optoelectronic
- Certification: CE, ISO9001, Rose, SGS
- Model Number: CH700WS10A-CTA
- Minimum Order Quantity: 100 Pcs
- Packaging Details: All the products are packed in right way to keep it safe. For small sizes of products we use tray + carton, For bigger sizes we use foam slot + carton. we also design packages according to customers' requirements
- Delivery Time: 3~7 Days
- Payment Terms: T/T, AliPay, PayPal
- Supply Ability: 50000000 pcs/month



Product Specification

- Product Name: 7-Inch LCD Screen
- Touch IC: GT911
- Storage Temperature: -30 ~ +80 °C
- Operating Temperature: -20 ~ +70 °C
- Touch Interface: I2C
- Backlight Luminance: 500 Cd/m2
- FPC Pin Number: 50pins
- Touch Glass Lens: 0.7 Mm
- Display Mode: IPS/Transmissive/Normally Black
- Highlight: 7 Inch LCD Screen, 1024x600 LCD Screen, Capacitive Touch LCD Screen



More Images





Product Description

Product Description:

Chenghao CH700WS10A-CTA is a color tft lcd module customized for installation in industrial control terminals. Its structure includes a tft lcd panel, a backlight component, a driver IC, a flexible circuit board, and a capacitive touch panel.

This color lcd display has an active color display area with a diagonal measurement of 7 inches, which can display a high-definition picture of 1024*600 pixels. In order to give customers a better visual experience, the display also uses IPS/Transmissive/Normally Black display mode, which expands the best viewing angle of the display to 80/80/80/80.

In addition, in order to make the equipment more stable in complex and changing industrial environments, our engineers have adopted a wide temperature resistance design for Lcd Screen CH700WS10A-CTA. A large amount of experimental data shows that the display can run very stably and smoothly even when working at the extreme value of the temperature range of -20 ~ +70°C.

Overall, this TFT LCD display is an ideal choice for anyone who needs a high-quality, reliable 7-inch LCD screen. It offers excellent performance, a wide storage temperature range, and easy integration with a wide range of devices, making it an ideal choice for a wide range of applications.

Features:

Product Name: TFT LCD Display

Operating Temperature: -20 ~ +70 °C

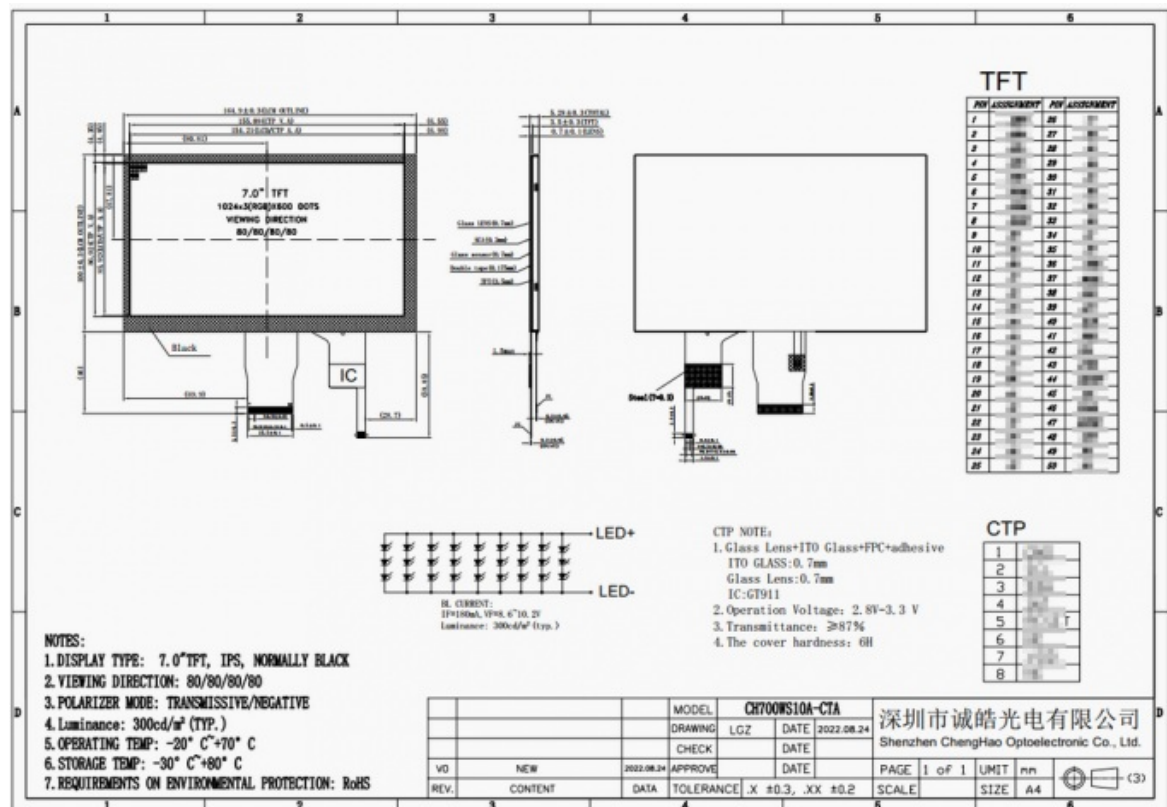
Display Type: 7" TFT + CTP

Touch IC: GT911

FPC Pin Number: 50pins

Backlight Luminance: 500 Cd/m2

Looking for a reliable display TFT LCD supplier? Look no further than our TFT LCD Display product! With its 7" TFT + CTP display type, GT911 touch IC, and 50pin FPC pin number, this product is perfect for a wide variety of applications. Plus, with an operating temperature range of -20 ~ +70 °C and a backlight luminance of 500 Cd/m2, you can trust that this display will perform reliably in any environment.



Technical Parameters:

Display Interface

RGB

Display Type	7" TFT + CTP
Operating Temperature	-20 ~ +70 °C
Backlight Luminance	500 Cd/m2
Touch glass Lens	0.7 Mm
Touch Type	Capacitive
Touch Interface	I2C
Display Mode	IPS/Transmissive/Normally Black
Touch IC	GT911
Resolution	1024*600 Dots
Keywords	tft lcd display & 7 inch lcd

Applications:

Chenghao Optoelectronic's TFT LCD products are widely used in various industries, including communication equipment, home appliances, industrial control, medical equipment, vehicle-mounted equipment, digital equipment, wearable devices, IoT equipment and other fields. Specific application scenarios include but are not limited to GPS navigation, digital photo frames, finger pulse meters, vehicle-mounted display equipment, payment and financial equipment, customer terminal equipment, elevator display equipment, industrial control equipment, instrument measurement equipment, artificial intelligence equipment, medical equipment, smart home equipment, security identification equipment, vending machines, etc. In addition, Chenghao Optoelectronic also provides various forms of customization services, including module customization services, packaging customization services and transportation customization services. Their LCD products are not only widely used in various industries, but also have the characteristics of high quality, environmental friendliness and compliance with international standards. Therefore, whether in the industrial field, home appliance field, medical equipment field or artificial intelligence field, Chenghao Optoelectronic's TFT LCD products can provide unique, innovative and market-leading modules to meet customers' various needs and industry applications.



FAQ:

Q: What is the brand name of this TFT LCD Display?

A: The brand name of this TFT LCD Display is chenghao optoelectronic.

Q: What is the model number of this TFT LCD Display?

A: The model number of this TFT LCD Display is CH700WS10A-CTA.

Q: What is the place of origin of this TFT LCD Display?

A: The place of origin of this TFT LCD Display is China.

Q: What certifications does this TFT LCD Display have?

A: This TFT LCD Display has CE, ISO9001, Rose, and SGS certifications.

Q: What is the minimum order quantity for this TFT LCD Display?

A: The minimum order quantity for this TFT LCD Display is 100 pieces.

Q: What are the packaging details for this TFT LCD Display?

A: All the products are packed in the right way to keep it safe. For small sizes of products, we use tray + carton. For bigger sizes, we use foam slot + carton. We also design packages according to customers' requirements.

Q: What is the delivery time for this TFT LCD Display?

A: The delivery time for this TFT LCD Display is 3~7 days.

Q: What are the payment terms for this TFT LCD Display?

A: The payment terms for this TFT LCD Display are T/T, AliPay, and PayPal.

Q: What is the supply ability for this TFT LCD Display?

A: The supply ability for this TFT LCD Display is 50 million pieces per month.



Shenzhen ChengHao Optoelectronic Co., Ltd.



+86 755-27806536



add@chenghaolcm.com



chenghaolcd.com

7th floor, building C5, Hengfeng Industrial City, Hangcheng street, Bao'an District, Shenzhen

