



SPI MCU RGB Multi-Interface 1.8 Inch IPS Display Screen With Free Viewing Direction

Our Product Introduction

for more products please visit us on chenghaolcd.com

Basic Information

- Place of Origin: China, Shenzhen
- Brand Name: Chenghao Optoelectronic
- Certification: CE RoHS
- Model Number: CH180HV02A
- Minimum Order Quantity: 100 Pcs
- Packaging Details: All the products are packed in right way to keep it safe. For small sizes of products we use tray + carton, For bigger sizes we use foam slot + carton. we also design packages according to customers' requirements
- Delivery Time: 7-15 working days
- Supply Ability: 300Kpcs/month

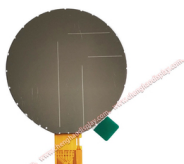


Product Specification

- Product Name: Round TFT
- FPC Pin Number: 25pins
- Storage Temperature: -30 ~ +80 °C
- Backlight: 4 Pcs White LED
- Display Mode: IPS/Transmissive/Normally Black
- Operating Temperature: -20 ~ +70 °C
- Viewing Direction: 85/85/85/85
- Luminance: 500 Cd/m2
- Color: 65K
- Interface: SPI MCU RGB
- Highlight: SPI MCU IPS Display Screen ,
RGB Multi-Interface IPS Display Screen ,
1.8 Inch IPS Display Screen



More Images



Product Description

Product Description:

ChengHao Display model CH180HV02A is a state-of-the-art color active matrix thin film transistor (TFT) liquid crystal display (LCD) designed and manufactured using high-quality amorphous silicon TFT technology, which serves as a critical switching device. This versatile model includes a TFT LCD panel, a driving IC, a high brightness back-light, a capacitive touch panel, and FPC. One of the standout features of this TFT LCD is its 1.8 (Round shape) inch diagonally measured active display area, which packs in a high pixel density with its 360*360 resolution. Additionally, the ST77916 driving IC enables the display to showcase 65K colors via 3line SPI or R.G.B. signal input. The driver is firmly mounted on the glass, and the interconnection is achieved via FPC, including components required to drive the display module. Support SPI/MCU/RGB multi-interface capabilities provide users with a variety of options.



Moreover, FPC customization options are available according to customer requirements, such as modifying back-light and CTP structure, interface definition, and more. We are committed to providing you with an LCD model tailored to your specific needs. Finally, it is worth noting that the CH180HV02A model complies with both RoHS and Halogen Free regulations, ensuring that environmental standards are met while still delivering first-rate performance and functionality.

Features:

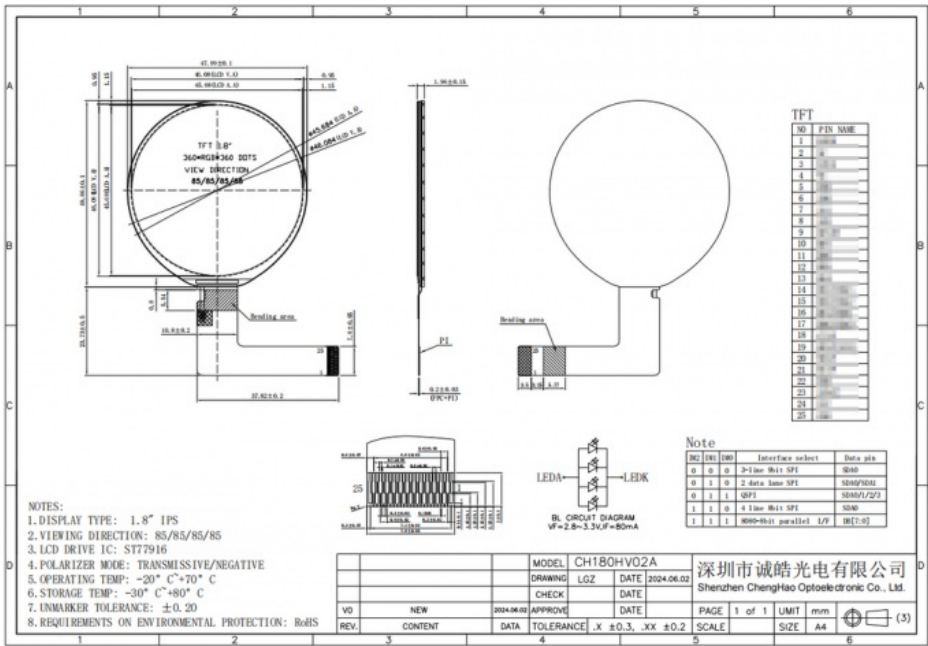
Our high-resolution display boasts 360 x 360 pixels, offering users a delicate and detailed visual experience. This display is particularly suited for displaying complex graphics and text, ensuring clarity and precision in even the most intricate of applications. Through the use of In-Plane Switching (IPS) technology, our display provides a wider viewing angle of 85°/85°/85°/85°, guaranteeing consistency of color and brightness regardless of the angle from which it is viewed. This feature enhances the overall user experience and convenience in a variety of applications.

Thanks to its high-quality 4 white LED backlighting, our display offers excellent brightness, up to 500 cd/m², ensuring clear visibility even in strong light environments. This feature provides optimal performance in a wide range of lighting conditions.

Model	CH180HV02A
Lcd Type	1.8" TFT
Display Mode	Transmissive/IPS/Normally Black
Backlight Brightness	500 nits (Optional)
Interface	SPI/MCU/RGB
Color	65K
Viewing Direction	85/85/85/85

The display can operate within a wide temperature range of -20°C to +70°C, making it adaptable to numerous harsh environments and ensuring the product's stability and reliability. Additionally, it has a storage temperature range of -30°C to +80°C, further enhancing the product's robustness and dependability.

With support for 65K color display, this module provides rich color levels and details, enhancing the overall user experience and quality of the visual output. The flexibility of this feature makes it ideal for a wide range of applications. Our display boasts a flexible interface supporting SPI, MCU, and RGB, allowing for easy and convenient connections with various controllers. This streamlined integration process enhances the user experience and ensures a simplified user journey for both developers and end-users.



Technical Parameters:

Module Information

Module Name: 1.8 inch Round Lcd screen
Module No: CH180HV02A
Resolution: 360*360 dots
Display Mode: IPS/Transmissive/Normally Black
Viewing Direction: 85/85/85/85
Backlight: 4 pcs white LED
Luminance: 500 cd/m2
Operating Temperature: -20 ~ +70 °C
Storage Temperature: -30 ~ +80 °C
Color: 65K
Module Interface: SPI/MCU/RGB
FPC Pin Number: 25 pins

Applications:

The CH180HV02A is a circular customized LCD panel that has found applications in many different electronic gadgets across various industries.

Its versatility makes it a popular choice for a wide range of projects. Some of the most common use cases include the following:

Smart watches

Fitness trackers

Medical monitoring equipment

Portable consumer electronics

FAQ:

Q1: What is the brand name of this IPS LCD Display?

A1: The brand name of this IPS LCD Display is Chenghao Optoelectronic.

Q2: What is the model number of this IPS LCD Display?

A2: The model number of this IPS LCD Display is CH180HV02A.

Q3: Where is this IPS LCD Display manufactured?

A3: This IPS LCD Display is manufactured in Shenzhen, China.

Q4: What are the certifications for this IPS LCD Display?

A4: This IPS LCD Display is certified with CE and RoHS.

Q5: What is the minimum order quantity for this IPS LCD Display?

A5: The minimum order quantity for this IPS LCD Display is 100 pcs.

Q6: What is the packaging method for this IPS LCD Display?

A6: All the products are packed in right way to keep it safe. For small sizes of products we use tray + carton, For bigger sizes we use foam slot + carton. We also design packages according to customers' requirements.

Q7: What is the delivery time for this IPS LCD Display?

A7: The delivery time for this IPS LCD Display is 7-15 working days.

Q8: What is the supply ability for this IPS LCD Display?

A8: The supply ability for this IPS LCD Display is 300Kpcs/month.



Shenzhen ChengHao Optoelectronic Co., Ltd.



+86 755-27806536



add@chenghaolcm.com



chenghaolcd.com

7th floor, building C5, Hengfeng Industrial City, Hangcheng street, Bao'an District, Shenzhen