



1.8 Inch Round TFT LCD with 360x360 Resolution 85/85/85/85 Free Viewing Angle

Our Product Introduction

for more products please visit us on chenghaolcd.com

Basic Information

- Place of Origin: China, Shenzhen
- Brand Name: Chenghao Optoelectronic
- Certification: CE RoHS
- Model Number: CH180HV02A
- Minimum Order Quantity: 100 Pcs
- Packaging Details: All the products are packed in right way to keep it safe. For small sizes of products we use tray + carton, For bigger sizes we use foam slot + carton. we also design packages according to customers' requirements
- Delivery Time: 7-15 working days
- Supply Ability: 300Kpcs/month



Product Specification

- Product Name: 1.8 Inch LCD
- Color: 65K
- Module Interface: SPI/MCU/RGB
- Viewing Direction: 85/85/85/85
- Storage Temperature: -30 ~ +80 °C
- Backlight: 4 Pcs White LED
- Luminance: 500 Cd/m2
- Operating Temperature: -20 ~ +70 °C
- FPC Pin Number: 25pins
- Highlight: OEM Round TFT LCD, 1.8 Inch Round TFT LCD, 360x360 Round TFT LCD



More Images



Product Description

Product Description:



ChengHao Display Model CH180HV02A Overview

ChengHao Display model CH180HV02A is a color active matrix thin film transistor (TFT) liquid crystal display (LCD) that uses amorphous silicon TFT as a switching device. This model is composed of a TFT LCD panel, a driving IC, a high brightness back-light, a capacitive touch panel and FPC.

This TFT LCD has a 1.8 (Round shape) inch diagonally measured active display area with 360*360 resolution. The driving IC is the ST77916 and can display 65K colors by 3line SPI or R.G.B. signal input. The driver is mounted on the glass and the interconnection via FPC including components to drive the display module. Support SPI/MCU/RGB multi-interface.

In addition, FPC can also be customized according to customer requirements, such as modifying back-light and CTP structure, interface definition, etc. The CH180HV02A model is also RoHS Compliance & Halogen Free.

Features:

High resolution: The display provides users with a high resolution of 360 x 360 pixels. This ensures a delicate visual experience, making it suitable for displaying complex graphics and text. The high resolution ensures that every detail is captured and presented with perfection, making the display ideal for a wide range of applications.

IPS display mode: The display uses IPS (In-Plane Switching) technology, providing a wider viewing angle of 85°/85°/85°/85°. The technology ensures the consistency of color and brightness when viewed from different angles. The IPS display mode makes it easy for multiple users to view the display without any distortion or color shift.

High-quality backlight: The display is equipped with 4 white LED backlights, which improve the brightness of the screen (500 cd/m²). This ensures clear visibility even in strong light environments. The high-quality backlight improves the contrast and clarity of the display, making it easy to read and use even under bright sunlight.

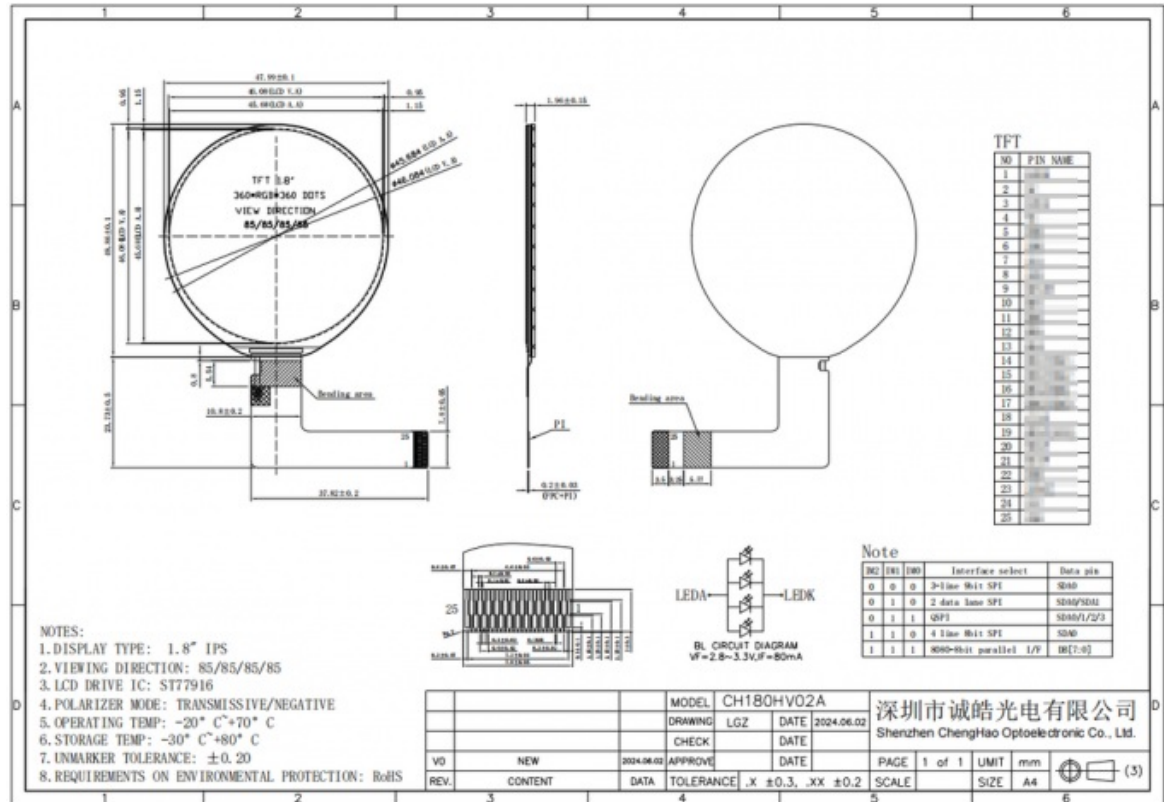
Product Model	CH180HV02A
Number of dots	360x360
Luminance	500 cd/m ²
Viewing Angle	85/85/85/85
Interface	SPI+RGB/MCU
Operating Temperature	-20 ~ +70°C

Wide operating temperature: The operating temperature range of the display is -20°C to +70°C, and the storage temperature range is -30°C to +80°C. The display can adapt to a variety of harsh environments and ensure product stability and reliability. This makes it ideal for use in extreme conditions and ensures that the display operates without any issues under all circumstances.

Color performance: The display supports 65K color display, which can present rich color levels and details, enhancing user experience. The color performance ensures that the display delivers accurate and vibrant colors, making it ideal for applications that require precise color representation.

Flexible interface: The module interface of the display supports SPI, MCU, and RGB, which is convenient for connection with various controllers and simplifies the integration process. The flexible interface makes it easy to integrate the display into a wide range of devices and ensures that it can be used with different controllers and platforms.

The operating temperature range of the module is between -20°C to +70°C, which makes it quite versatile for usage. The module also has a storage temperature range of -30°C to +80°C, making it durable in various conditions. With a color range of 65K, the module can display a vast number of colors.



Smart watches

Medical monitoring devices

The versatility of the CH180HV02A makes it one of the most popular LCD displays on the market. Its unique form factor and modifiable and customizable features provide users with more possibilities for creativity. This is also the main reason why it has been included in the options of many electronic product manufacturers.

In summary, the CH180HV02A is a circular custom LCD display that is becoming increasingly popular due to its versatility, high resolution, and compact design. Its wide range of applications makes it an excellent choice for multiple industries and electronic device manufacturers.

Frequently Asked Questions about Chenghao Optoelectronic IPS LCD Display CH180HV02A:

A: The model number of this IPS LCD Display is CH180HV02A.

A: This product is manufactured in Shenzhen, China.

A: This IPS LCD Display is CE and RoHS certified.

A: The minimum order quantity for this product is 100 pcs.

A: The delivery time for this IPS LCD Display is 7-15 working days.

A: The supply ability for this product is 300Kpcs/month.

A: All the products are packed in the right way to keep it safe. For small sizes of products, we use tray + carton. For bigger sizes, we use

A: All the products are packed in the right way to keep it safe. For small sizes of products, we use tray + carton. For bigger sizes, we use

foam slot + carton. We also design packages according to customers' requirements.



Shenzhen ChengHao Optoelectronic Co., Ltd.



+86 755-27806536



add@chenghaolcm.com



chenghaolcd.com

7th floor, building C5, Hengfeng Industrial City, Hangcheng street, Bao'an District, Shenzhen