



1.8 Inch IPS TFT LCD Display Screen 360*360 Resolution Module Interface SPI/MCU/RGB

Our Product Introduction

for more products please visit us on chenghaolcd.com

Basic Information

- Place of Origin: China, Shenzhen
- Brand Name: Chenghao Optoelectronic
- Certification: CE RoHS
- Model Number: CH180HV02A
- Minimum Order Quantity: 100 Pcs
- Packaging Details: All the products are packed in right way to keep it safe. For small sizes of products we use tray + carton, For bigger sizes we use foam slot + carton. we also design packages according to customers' requirements
- Delivery Time: 7-15 working days
- Supply Ability: 300Kpcs/month

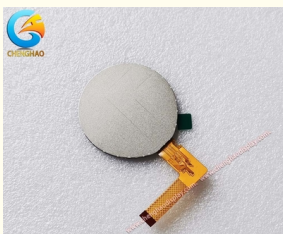


Product Specification

- Product Name: 1.8 Inch Custom Display
- Resolution: 360*360 Dots
- Backlight: 4 Pcs White LED
- Viewing Direction: 85/85/85/85
- Module Interface: SPI/MCU/RGB
- Luminance: 500 Cd/m2
- Color: 65K
- Operating Temperature: -20 ~ +70 °C
- Display Mode: IPS/Transmissive/Normally Black
- Highlight: SPI IPS LCD Display , 1.8 Inch IPS LCD Display , 360*360 IPS LCD Display



More Images



Product Description

Product Description:

The ChengHao Display model CH180HV02A is a TFT LCD designed with a color active matrix and uses an amorphous silicon TFT as a switching device. The device consists of a TFT LCD panel, a driving IC, a high brightness back-light, a capacitive touch panel and FPC. This model is a thin film transistor liquid crystal display.

The TFT LCD panel has a 1.8 inch diagonally measured active display area that is round in shape. It displays up to 360x360 resolution. The driving IC used is ST77916, which enables the TFT LCD to display 65K colors by 3line SPI or R.G.B signal input. The driver is directly mounted on the glass, and is interconnected with the display module via FPC. Multi-interface options including SPI, MCU and RGB are fully supported. Moreover, FPC can also be customized according to the client's needs and requirements. This includes the modification of the back-light, CTP structure, interface definition, and so on. The model also complies with RoHS and is Halogen Free.



Features:

Introducing our new display module, which offers a high resolution of 360 x 360 pixels, providing users with a delicate visual experience. This resolution is suitable for displaying complex graphics and text, making it perfect for a range of applications.

The display utilizes IPS (In-Plane Switching) technology, which ensures a wider viewing angle of 85°/85°/85°/85°. This means that the consistency of color and brightness is maintained when viewed from different angles, providing a better viewing experience for the user. Equipped with 4 white LED backlights, the display offers a high-quality backlight that improves brightness (500 cd/m²), ensuring clear visibility even in strong light environments.

Module No	CH180HV02A	--
Resolution	360x360	dots
Color	262	K
Interface	SPI/RGB/MCU	--
Viewing Direction	85/85/85/85	--

The display module's operating temperature range is -20°C to +70°C, and the storage temperature range is -30°C to +80°C, which allows it to adapt to a variety of harsh environments. This ensures product stability and reliability, making it suitable for a wide range of applications.

Our display module supports 65K color display, allowing it to present rich color levels and details. This enhances the user experience by providing a more dynamic visual display.

The module interface is flexible and supports SPI, MCU, and RGB, making it convenient for connection with various controllers and simplifies the integration process.

Technical Parameters:

Module Name: 1.8 inch Round LCD Screen

Module No: CH180HV02A

Resolution: 360*360 dots

Display Mode: IPS/Transmissive/Normally Black

Viewing Direction: 85/85/85/85

Backlight: 4 pcs white LED

Luminance: 500 cd/m²

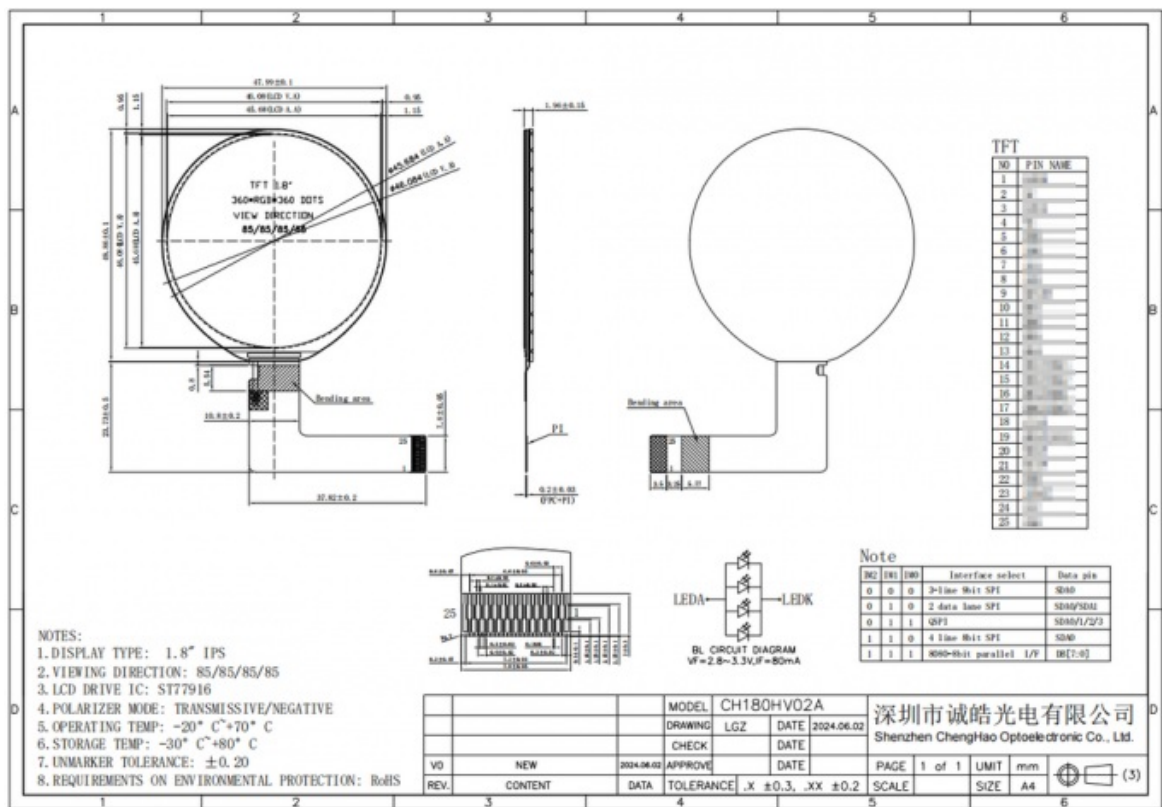
Operating Temperature: -20 ~ +70 °C

Storage Temperature: -30 ~ +80 °C

Color: 65K

Module Interface: SPI/MCU/RGB

FPC Pin Number: 25 pins



Applications:

The CH180HV02A custom LCD display is a circular screen that is commonly utilized in electronic devices within a diverse array of industries. Some notable applications of this display include smart watches, fitness trackers, medical monitoring equipment, and portable consumer electronics, amongst others.

FAQ:

Q: What is the brand name of this LCD display?

A: The brand name of this LCD display is Chenghao Optoelectronic.

Q: What is the model number of this LCD display?

A: The model number of this LCD display is CH180HV02A.

Q: Where is this LCD display manufactured?

A: This LCD display is manufactured in Shenzhen, China.

Q: What certifications does this LCD display have?

A: This LCD display has CE and RoHS certifications.

Q: What is the minimum order quantity for this LCD display?

A: The minimum order quantity for this LCD display is 100 pieces.

Q: What is the delivery time for this LCD display?

A: The delivery time for this LCD display is 7-15 working days.

Q: What is the supply ability for this LCD display?

A: The supply ability for this LCD display is 300Kpcs/month.

Q: What is the packaging method for this LCD display?

A: All the products are packed in the right way to keep them safe. For small sizes of products, we use tray + carton. For bigger sizes, we use foam slot + carton. We also design packages according to customers' requirements.



Shenzhen ChengHao Optoelectronic Co., Ltd.



+86 755-27806536



add@chenghaolcm.com



chenghaolcd.com

7th floor, building C5, Hengfeng Industrial City, Hangcheng street, Bao'an District, Shenzhen