



## 800x600 Pixels Lcd Touch Screen Display 10.4 Inch With SPI RGB Mcu Multi-Interface

### Our Product Introduction

for more products please visit us on [chenghaolcd.com](http://chenghaolcd.com)

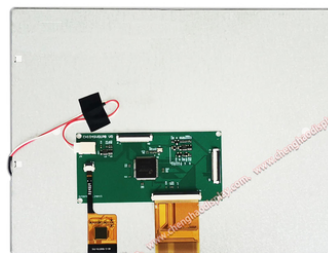
#### Basic Information

- Place of Origin: China Shenzhen
- Brand Name: Chenghao Optoelectronic
- Certification: RoHS CE FCC
- Model Number: CH104SV01A-CT-PB
- Minimum Order Quantity: 100 pcs
- Packaging Details: All the products are packed in right way to keep it safe. For small sizes of products we use tray + carton, For bigger sizes we use foam slot + carton. we also design packages according to customers' requirements
- Delivery Time: 3~7 Days
- Payment Terms: TT
- Supply Ability: 300K pcs/month

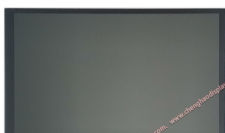


#### Product Specification

- Product Name: 10.4 Inch Lcd Touch Screen Display
- FPC Pin Numbers: 40 Pins
- Size: 10.4 Inch
- Resolution: 800x600 Pixels
- Viewing Direction: 12:00
- Display Mode: TN/Normally White/Transmissive
- Module Interface: SPI+RGB/MCU
- Luminance: 800 Cd/m2
- Operating Temperature: -20°C~70°C
- Highlight: SPI RGB Lcd Touch Screen Display ,  
10.4 Inch Lcd Touch Screen Display ,  
800x600 Pixels Lcd Touch Screen Display



#### More Images





## Product Description

### Product Description:

Chenghao Display model CH104SV01A-CT-PB is an LCD module that utilizes amorphous silicon TFT as a switching device. This module includes a touch panel, an LCD display screen, and a PCB board. The LCD display screen consists of a touch panel, a TFT LCD panel, a driving IC, a back-light, and FPC.

The display screen is capable of outputting image content with 16.7M color and 800\*600 pixels after inputting R.G.B. signal. It has a 10.4 inch active display area and adopts TN/Transmissive/Normally White display mode. The best viewing angle is at 12 o'clock, and it can operate at temperatures ranging from -20 ~ +70°C. This display screen is compatible with SPI, RGB, MCU, and other interfaces.

The touch panel on this module is a capacitive touch glass cover, and it is equipped with a control chip model GT9271. The glass cover can communicate with external devices through the I2C interface, and it also supports multi-touch. The thickness of the glass cover is 1.1 mm, and it is customizable to meet any customer's requirements.

Finally, it is essential to note that this module is RoHS compliant & Halogen-free, ensuring that it is environmentally friendly and safe for public use.

Module No	CH104SV01A-CT-PB
Resolution	800*600 dots
Viewing Direction	12:00
Interface	SPI+RGB/MCU
Manufacturer	Chenghao Optoelectronic

### Features:

Chenghao Display's CH104SV01A-CT-PB is an outstanding custom LCD display with an excellent cost performance ratio. This display module is designed to deliver exceptional image quality with premium features.

The display boasts a range of features, including:

**12 O'clock Viewing Direction:** To meet the requirements while adhering to cost constraints, the display module utilizes TN/Transmissive/Normally white display mode, ensuring that the optimal viewing angle of the display is 12:00.

**Support Wide Temperature:** With a broad temperature range design, this full-color LCD screen can operate effortlessly in a range of environments from -20 ~ +70°C. This feature is essential for machines and equipment that need to function smoothly in extreme environments.

**Support Human-Computer Interaction:** The display module comes with a sensitive capacitive touch glass panel installed on the surface, which allows for the collection of customer touch information and works with other elements to achieve screen control feedback.

### Technical Parameters:

Module Name: 10.4 inch Lcd Touch Screen Module

Module No: CH104SV01A-CT-PB

Module Type: 10.4" TFT+CTP+PCB

Resolution: 800\*600 dots

Display Mode: TN/Transmissive/Normally White

Viewing Direction: 12:00

Brightness: 800 cd/m<sup>2</sup>

Contrast: 500

Color: 16.7M

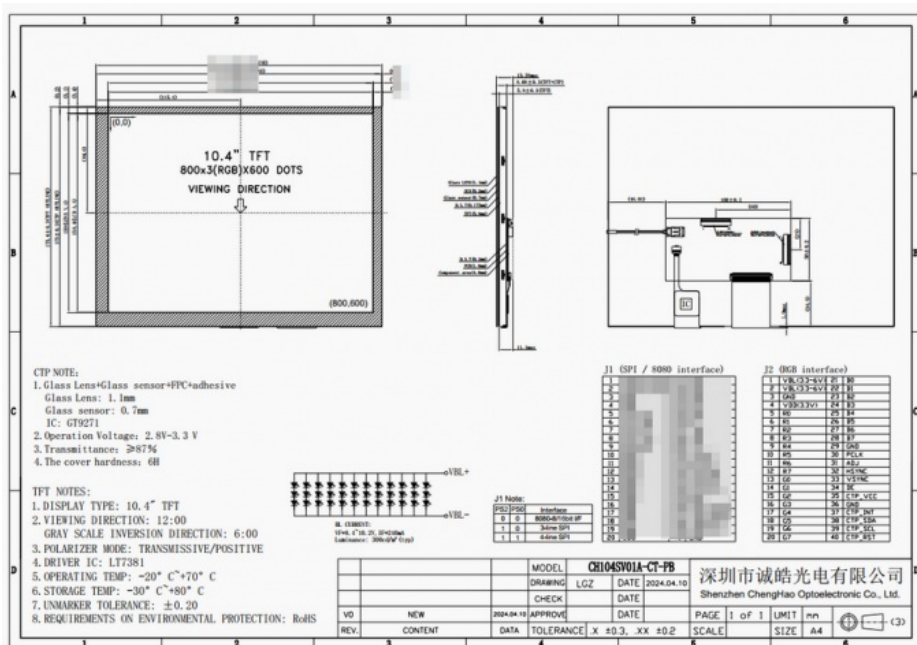
Touch Type: Capacitive

Touch Interface: I2C

Touch Glass Cover's lens: 1.1 mm

Operating Temperature: -20 ~ +70 °C

Storage Temperature: -30 ~ +80 °C

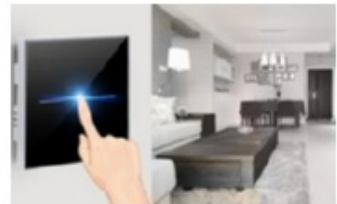


## Applications:

Chenghao Display has designed and customized CH104SV01A-CT-PB, a 10.4 inch LCD display module, specifically for industrial equipment.

This display module has several functional parameters that can be modified and adjusted as per customer requirements. This feature makes it highly versatile and suitable for a wide range of uses, including in home appliances, automobile transportation, Internet of Things equipment, medical equipment, and other similar industries.

Overall, Chenghao Display has created a display module that allows for flexibility and adaptability to meet the needs of various industries.



## FAQ:

**Q1: What is the brand name of this product?**

A1: The brand name of this product is Chenghao Optoelectronic.

**Q2: What is the model number of this product?**

A2: The model number of this product is CH104SV01A-CT-PB.

**Q3: Where is this product manufactured?**

A3: This product is manufactured in China Shenzhen.

**Q4: Does this product have any certifications?**

A4: Yes, this product is certified with RoHS, CE, and FCC certifications.

**Q5: What is the minimum order quantity for this product?**

A5: The minimum order quantity for this product is 100 pcs.

**Q6: How is this product packaged?**

A6: All the products are packed in the right way to keep it safe. For small sizes of products, we use tray + carton, for bigger sizes we use foam slot + carton. We also design packages according to customers' requirements.

**Q7: What is the delivery time for this product?**

A7: The delivery time for this product is 3~7 days.

**Q8: What are the payment terms for this product?**

A8: The payment terms for this product are TT.

**Q9: What is the supply ability for this product?**

A9: The supply ability for this product is 300K pcs/month.



**Shenzhen ChengHao Optoelectronic Co., Ltd.**



+86 755-27806536



add@chenghaolcm.com



chenghaolcd.com

7th floor, building C5, Hengfeng Industrial City, Hangcheng street, Bao'an District, Shenzhen