



10.4 Inch Touch Screen Module 800x600 Pixels 40 Pins SPI /RGB/MCU Multi-Interface With CTP

Our Product Introduction

for more products please visit us on chenghaolcd.com

Basic Information

- Place of Origin: China Shenzhen
- Brand Name: Chenghao Optoelectronic
- Certification: RoHS CE FCC
- Model Number: CH104SV01A-CT-PB
- Minimum Order Quantity: 100 pcs
- Packaging Details: All the products are packed in right way to keep it safe. For small sizes of products we use tray + carton, For bigger sizes we use foam slot + carton. we also design packages according to customers' requirements
- Delivery Time: 3~7 Days
- Payment Terms: TT
- Supply Ability: 300K pcs/month

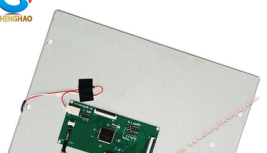


Product Specification

- Product Name: 10.4 Inch Touch Screen Module
- Resolution: 800x600 Pixels
- Touch Type: Capacitive
- Operating Temperature: -20°C~70°C
- FPC Pin Numbers: 40 Pins
- Luminance: 800 Cd/m2
- Contrast Ratio: 500
- Touch Panel Interface: I2C
- Size: 10.4 Inch
- Highlight: 10.4 Inch Touch Screen Module,
40 Pins Touch Screen Module,
800x600 Pixels Touch Screen Module



More Images





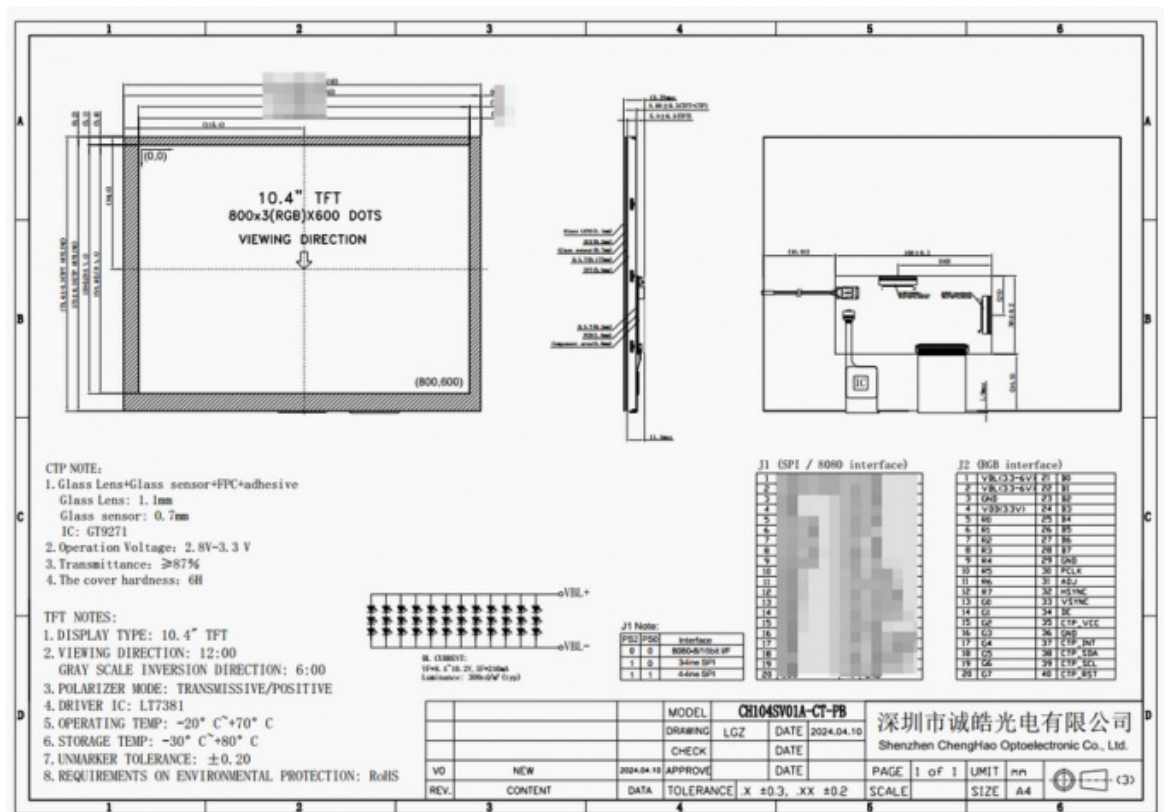
Product Description

Product Description:

The Chenghao Display model CH104SV01A-CT-PB is an advanced color active matrix thin film transistor (TFT) liquid crystal display (LCD) module that is equipped with amorphous silicon TFT switching technology. This state-of-the-art module integrates a touch panel, an LCD display screen, and a PCB board. The LCD display consists of a touch panel, a TFT LCD panel, a driving IC, a back-light, and FPC. The active display area of this LCD display screen measures 10.4 inches. Upon inputting R.G.B. signal, it can produce output images with 16.7M color and 800*600 pixels. With TN/Transmissive/Normally White display mode, it provides optimal viewing angle at 12 o'clock and can operate efficiently in temperatures ranging from -20 ~ +70°C. Furthermore, it is compatible with SPI, RGB, MCU, and other interfaces.

The touch panel of this module features a capacitive touch glass cover equipped with a control chip model GT9271. It communicates with external devices through the I2C interface and supports multi-touch. The thickness of the glass cover is 1.1 mm, and it can be customised according to customer requirements.

This module is RoHS Compliance & Halogen Free, therefore, it complies with international safety standards.



Features:

The CH104SV01A-CT-PB custom LCD display from Chenghao Display is a remarkable display module featuring a very high cost performance ratio. The display boasts of several unique features, including:

12 O'clock Viewing Direction : To meet specific needs while controlling costs effectively, this display module makes use of the TN/Transmissive/Normally white display mode. This results in a display with the optimal viewing angle of 12:00.

Wide Temperature Support : The display comes with a wide temperature design that allows it to operate smoothly in temperatures ranging from -20 ~ +70°C. This feature makes the display suitable for use in machines and equipment that operate in extreme environments.

Support for Human-Computer Interaction : The CH104SV01A-CT-PB LCD display features a sensitive capacitive touch glass panel located on its surface. This panel is primarily used to collect touch information from customers and subsequently work with other components to provide screen control feedback.

Technical Parameters:

10.4 inch Lcd Touch Screen Module

Number of dots: 800*600

Display Mode:TN/Transmissive/Normally White

Viewing Direction: 12:00
Brightness: 800 cd/m2
Contrast: 500
Operating Temperature Range: -20°C to +70°C
Storage Temperature Range: -30°C to +80°C

lcd No	CH104SV01A-CT-PB
Manufacturer	Chenghao Optoelectronic
MOQ	100 pcs
About Samples	Most of our LCD products have a small amount of sample inventory. If you need it, please contact our online customer service

Applications:

Chenghao Display has designed and customized the CH104SV01A-CT-PB LCD display module specifically for industrial equipment. The module features a 10.4 inch display and a range of functional parameters that can be modified to meet the specific needs of customers. The versatility of this display module makes it ideal for a wide range of applications, including home appliances, automobile transportation, medical equipment, and Internet of Things devices.



FAQ:

Q: What is the brand name of the small LCD touch screen?

A: The brand name is Chenghao Optoelectronic.

Q: What is the model number of the small LCD touch screen?

A: The model number is CH104SV01A-CT-PB.

Q: Where is the small LCD touch screen manufactured?

A: It is manufactured in China Shenzhen.

Q: What certifications does the small LCD touch screen have?

A: It has RoHS, CE, and FCC certifications.

Q: What is the minimum order quantity for the small LCD touch screen?

A: The minimum order quantity is 100 pcs.

Q: How is the small LCD touch screen packaged?

A: All the products are packed in the right way to keep them safe. For small sizes of products, we use tray + carton. For bigger sizes, we use foam slot + carton. We also design packages according to customers' requirements.

Q: What is the delivery time for the small LCD touch screen?

A: The delivery time is 3~7 days.

Q: What are the payment terms for the small LCD touch screen?

A: The payment terms are TT.

Q: What is the supply ability for the small LCD touch screen?

A: The supply ability is 300K pcs/month.



Shenzhen ChengHao Optoelectronic Co., Ltd.



+86 755-27806536



add@chenghaolcm.com



chenghaolcd.com

7th floor, building C5, Hengfeng Industrial City, Hangcheng street, Bao'an District, Shenzhen