



13.3 TFT Panel 1920x1080 Pixels Custom Lcd Display Screen With Transmissive Display Mode

Our Product Introduction

for more products please visit us on chenghaolcd.com

Basic Information

- Place of Origin: China, Shenzhen
- Brand Name: Chenghao Optoelectronic
- Certification: CE RoHS
- Model Number: CH133FH01A
- Minimum Order Quantity: 100 Pcs
- Packaging Details: All the products are packed in right way to keep it safe. For small sizes of products we use tray + carton, For bigger sizes we use foam slot + carton. we also design packages according to customers' requirements
- Delivery Time: 7-15 working days
- Supply Ability: 300Kpcs/month



Product Specification

- Screen Size: 13.3 Inch
- Driver IC: ST7701
- Life Time: 50000 H
- Viewing Area: 294*166 Mm
- Display Mode: IPS / Transmissive / Normally Black
- Module Type: 13.3" TFT
- Brightness: 330 Cd/m2
- Resolution: 1920x1080
- Highlight: 1920x1080 Pixels Lcd Display Screen, Transmissive Display Mode Lcd Display Screen, 13.3 TFT Panel Lcd Display Screen



More Images



Product Description

Product Description:

ChengHao Display model CH133FH01A is a color active matrix thin film transistor (TFT) liquid crystal display (LCD) that employs amorphous silicon TFT as a switching device. It consists of a TFT LCD panel, a driving IC, a back-light, and Connector.

This display module is characterized by a diagonal measurement of 13.3 inches and the capability to display 16M colors and 1920*1080 pixels of full-color images through R.G.B. signal input. It uses IPS display technology, with a free viewing angle of 89/89/89/89, providing the best viewing experience. The module's temperature range extends from -20°C to +70°C for normal operation, while its storage temperature range varies from -30°C to +80°C. With a maximum brightness of 330 cd/m2, this display module also supports EDP interface. Additionally, it complies with RoHS & Halogen-free standards.

Module No	CH133FH01A
Display Type	13.3" TFT
Resolution	19250*1080 dots
Interface	EDP
Luminance	330 cd/m2

Features:

The ChengHao Display model CH133FH01A is a high-quality LCD screen that has been designed and customized by Chenghao Optoelectronic. This display module has a resolution of 1920 x 1080, allowing for clear and precise viewing of the screen.

Free Viewing Direction is supported: Thanks to its use of IPS display technology, the display supports viewing angles of 89/89/89/89, making it easy for users to read the screen from any angle without worrying about blurred vision.

Supports wide temperature environment: The CH133FH01A has a robust design that supports operation at temperatures ranging from -20 to +70 degrees Celsius, making it ideal for use in extreme environments.

Long service life: The backlight component of the CH133FH01A has a service life of up to 50000H, which contributes significantly to the durability of this display module.

Bright colors: The CH133FH01A can display 16M colors by R.G.B. signal input, which results in realistic video or images.

EDP interface support: CH133FH01A uses the EDP interface for communication and interconnection with external devices, which enhances its advantages in industrial application.

Technical Parameters:

Module Name: 13.3 inch Tft Lcd Display Module

Module Type: 13.3" TFT

Display Mode: IPS/Transmissive/Normally Black

Number of Dots: 1920*1080

Viewing Direction: 89/89/89/89

Luminance: 330 cd/m2

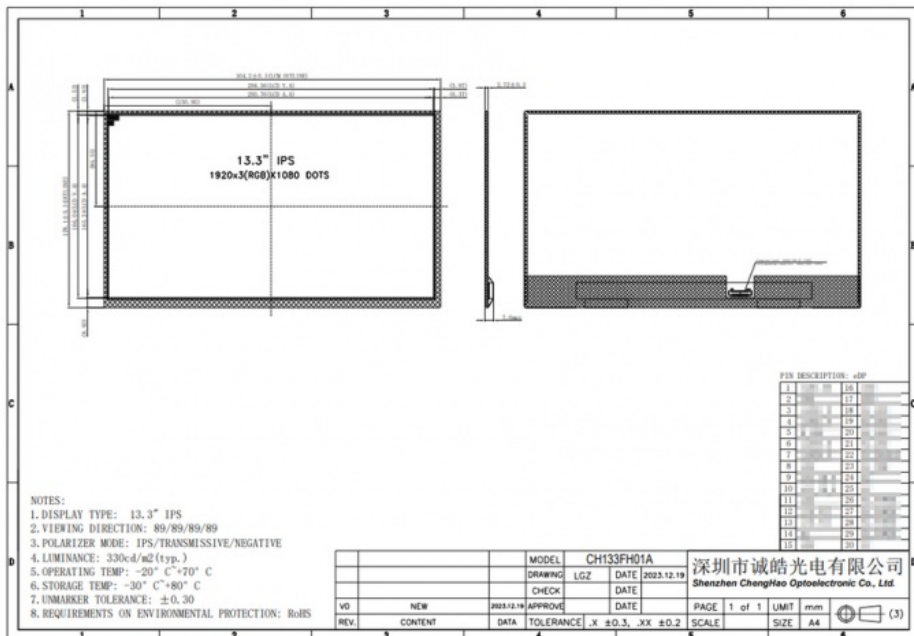
Contrast: 800

Color: 16M

Pin Number: 30 pins

Operating Temperature: -20 ~ +70

Storage Temperature: -30 ~ +80



The description pertains to a 13.3 inch TFT LCD display module with a resolution of 1920 by 1080 dots and a viewing direction of 89/89/89/89. The display mode is either IPS, transmissive, or normally black. It has a luminance of 330 cd/m², a contrast ratio of 800, and supports 16 million colors. It requires a 30-pin connector and has an operating temperature range of -20 to +70 degrees Celsius, as well as a storage temperature range of -30 to +80 degrees Celsius.

Applications:

Customizable Full HD LCD Screen for Automotive Central Control

ChengHao Display Model CH133FH01A Introduction - A high-performance Full HD LCD screen, developed and customized to meet the needs of automotive central control. With customizable performance parameters, this LCD screen can be customized to the precise requirements of a range of industries, and can be widely used in various industries such as automotive manufacturing, industrial equipment, home appliances, consumer electronics, medical equipment, etc.

Customization:

ChengHao Display model CH133FH01A is a customized tft LCD module. Most of its performance parameters can be modified and customized according to customer requirements. The customized contents include but are not limited to the following:

(1) Backlight brightness

The current brightness of CH133FH01A is 330 cd/m², we can modify the brightness according to customer requirements, so that it can adapt to your use environment, support the modification range of 200~3000 cd/m².

(2) Interface type

The interface of the LCD is EDP interface, if you need, we can also modify it to LVDS, SPI, MCU, RGB, MIPI, HDMI and other interfaces.

(3) Perspective

The CH133FH01A supports the 89/89/89/89 free viewing Angle, and can also be modified to the 6 o'clock, 12 o'clock and other viewing angles



Shenzhen ChengHao Optoelectronic Co., Ltd.



+86 755-27806536



add@chenghaolcm.com



chenghaolcd.com

7th floor, building C5, Hengfeng Industrial City, Hangcheng street, Bao'an District, Shenzhen