



## Lcd Supplier 13.3 Inch IPS Liquid Crystal Display 30pin With EDP Interface

### Our Product Introduction

for more products please visit us on [chenghaolcd.com](http://chenghaolcd.com)

#### Basic Information

- Place of Origin: China, Shenzhen
- Brand Name: Chenghao Optoelectronic
- Certification: CE RoHS
- Model Number: CH133FH01A
- Minimum Order Quantity: 100 Pcs
- Packaging Details: All the products are packed in right way to keep it safe. For small sizes of products we use tray + carton, For bigger sizes we use foam slot + carton. we also design packages according to customers' requirements
- Delivery Time: 7-15 working days
- Supply Ability: 300Kpcs/month



#### Product Specification

- Screen Size: 13.3 Inch
- Pin Number: 30
- Color Saturation: 16M
- Interface: EDP
- Driver IC: ST7701
- Viewing Area: 294\*166 Mm
- Active Area: 293\*165 Mm
- Brightness: 330 Cd/m<sup>2</sup>
- Highlight: EDP Interface IPS Liquid Crystal Display, 30pin IPS Liquid Crystal Display, 13.3 Inch IPS Liquid Crystal Display



#### More Images



## Product Description

### Product Description:

The ChengHao Display model CH133FH01A is a type of TFT LCD that employs an amorphous silicon TFT as a switching device. It also incorporates a TFT LCD panel, a driving IC, a back-light and Connector.

With a diagonal measurement of 13.3 inches, this display module is capable of presenting 16M colors and 1920\*1080 pixels of full-color images via R.G.B signal input. It utilizes IPS display technology giving it the best viewing angle of 89/89/89/89 (free viewing angle).

The module is designed to operate within the temperature range of -20°C to +70°C, and can also be stored at temperatures ranging from -30°C to +80°C. The screen has a maximum brightness of up to 330 cd/m2, and it supports EDP interface.

Moreover, the ChengHao Display model CH133FH01A is RoHS compliant and halogen-free, making it an eco-friendly choice.

### Features:

The ChengHao Display model CH133FH01A is a high-quality LCD screen with a resolution of 1920x1080 that has been designed and customized by Chenghao Optoelectronic. This display is equipped with a range of features that make it stand out:

**Free Viewing Direction:** Thanks to the use of IPS display technology, the display supports 89/89/89/89 viewing angles, which means that users can easily read the screen from various viewing angles without worrying about blurred vision.

**Full HD Support:** The display module has a TFT LCD panel with a resolution of 1920 by 1080, which means that the user can get a clear view when reading the screen.

**Wide Temperature Environment:** The CH133FH01A has a wide temperature tolerance design and supports smooth operation at -20 to +70 degrees Celsius, which means that the display module has strong environmental adaptability, making it ideal for devices that operate in extreme environments.

**Long Service Life:** The CH133FH01A has a backlight component with a service life of up to 50000H, which significantly increases the durability of the entire display.

**Bright Colors:** CH133FH01A supports 16M colors by R.G.B. signal input, making it possible to output more realistic videos or images.

**Support EDP Interface:** CH133FH01A uses the EDP interface as a protocol for communication and interconnection with external devices, which enhances its advantages in industrial applications.

Product No	CH133FH01A
Resolution	1920*1080 dots
Lcd Interface	EDP (support custom made)
BL Luminance	330 cd/m2 (support custom made)
Viewing Direction	89/89/89/89
Color	16M

### Technical Parameters:

Module Name

*The name of this module is the **13.3 inch Tft Lcd Display Module** .*

Module Type

*This module type is a **13.3" TFT** .*

Display Mode

*The display mode for this module can be **IPS , Transmissive , or Normally Black** .*

Number of Dots

*The number of dots on this module is **1920\*1080** .*

Viewing Direction

*The viewing direction for this module is **89/89/89/89** .*

Luminance

*The luminance of this module is **330 cd/m2** .*

Contrast

*The contrast of this module is **800** .*

Color

This module is capable of producing **16M** colors.

Pin Number

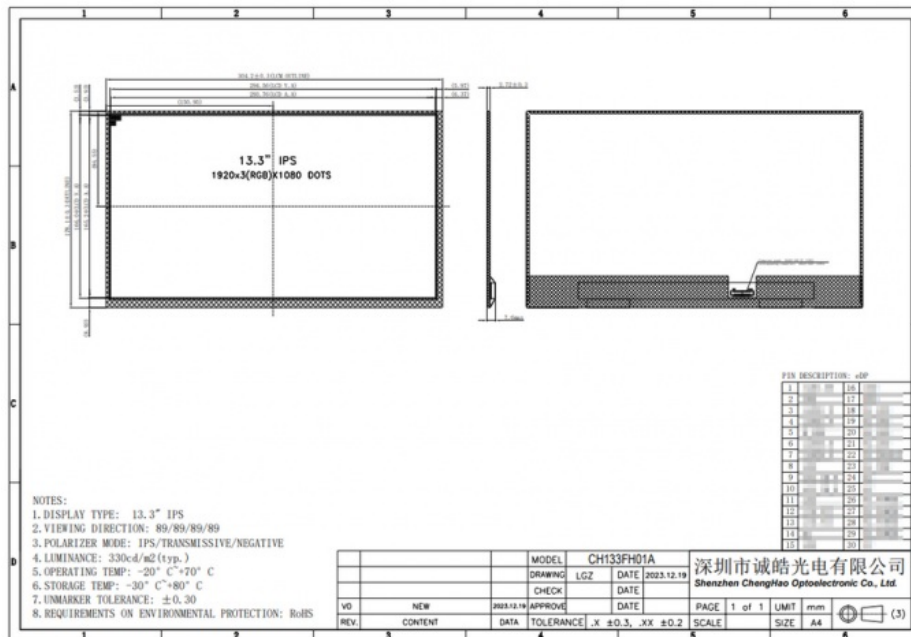
The number of pins on this module is **30 pins**.

Operating Temperature

The operating temperature range for this module is from **-20** degrees Celsius to **+70** degrees Celsius.

Storage Temperature

The storage temperature range for this module is from **-30** degrees Celsius to **+80** degrees Celsius.



## Applications:

ChengHao Display model CH133FH01A is specially designed as a full-HD LCD screen for use in automotive central control. It has been developed and tailored according to the specific requirements of the automotive industry.

The device has excellent flexibility, and almost all of its performance parameters are customizable, making it an optimal solution for various industrial sectors. This display can be widely applied in numerous industries, including but not limited to: automotive manufacturing, industrial equipment, household appliances, consumer electronic equipment, medical equipment, and more.

## FAQ:

Frequently Asked Questions about Chenghao Optoelectronic's CH133FH01A IPS LCD Display:

**Q: What is the model number of this IPS LCD display?**

A: The model number of this IPS LCD display is CH133FH01A.

**Q: Where is this IPS LCD display manufactured?**

A: This IPS LCD display is manufactured in Shenzhen, China.

**Q: What certifications does this IPS LCD display have?**

A: This IPS LCD display has CE and RoHS certifications.

**Q: What is the minimum order quantity for this IPS LCD display?**

A: The minimum order quantity for this IPS LCD display is 100 pcs.

**Q: What is the delivery time for this IPS LCD display?**

A: The delivery time for this IPS LCD display is 7-15 working days.

**Q: What is the supply ability of this IPS LCD display?**

A: The supply ability of this IPS LCD display is 300Kpcs/month.

**Q: How is this IPS LCD display packaged?**

A: All the products are packed in the right way to keep them safe. For small sizes of products, we use tray + carton, for bigger sizes we use foam slot + carton. We also design packages according to customers' requirements.



**Shenzhen ChengHao Optoelectronic Co., Ltd.**



+86 755-27806536



add@chenghaolcm.com



chenghaolcd.com

7th floor, building C5, Hengfeng Industrial City, Hangcheng street, Bao'an District, Shenzhen