



## Custom 480\*800 IPS LCD Display With ST7701 Driver IC 16M Color Saturation

### Our Product Introduction

for more products please visit us on [chenghaolcd.com](http://chenghaolcd.com)

#### Basic Information

- Place of Origin: China, Shenzhen
- Brand Name: Chenghao Optoelectronic
- Certification: CE RoHS
- Model Number: CH430WV22A-CT
- Minimum Order Quantity: 100 Pcs
- Packaging Details: All the products are packed in right way to keep it safe. For small sizes of products we use tray + carton, For bigger sizes we use foam slot + carton. we also design packages according to customers' requirements
- Delivery Time: 7-15 working days
- Supply Ability: 300Kpcs/month



#### Product Specification

- Product Name: Custom LCD Display
- Color Saturation: 16M
- Touch Panel Interface: I2C
- FPC Pin Number: 20
- Viewing Angle: 80/80/80/80
- Life Time: 50000 H
- Operating Temperature: -20 ~ +70
- Driver IC: ST7701
- Resolution: 480\*800
- Highlight: ST7701 Driver IC IPS LCD Display,  
480\*800 IPS LCD Display,  
16M Color Saturation IPS LCD Display



#### More Images



## Product Description

### Product Description:

The CH430WV22A-CT is an exemplary TFT LCD display module that measures 4.3 inches. It is customizable, and it boasts impressive functionalities and performance metrics. One of the awesome features of this module is its ability to deliver clear image display, thanks to its IPS/transmissive/normal black display mode and resolution of 480\*800 pixels. The module comes with a viewing angle of 80/80/80/80, a contrast ratio of 800, and a brightness of 500 cd/m<sup>2</sup> that ensures superior visual experiences in various environments.

|                   |  |
|-------------------|--|
| Model             | CH430WV22A-CT                                    |
| Module Type       | 4.3" TFT+CTP                                     |
| Touch Type        | Capacitive touch screen                          |
| Resolution        | 480x800 pixels                                   |
| Viewing Direction | 80/80/80/80                                      |
| Luminance         | 500cd/m <sup>2</sup> ( 200~3000 Optional)        |
| Module Interface  | MIPI (SPI / RGB/ MCU/LVDS/HDMI/EDP ...optional ) |
| Keywords          | lcd display module / touch screen display        |

### Features:

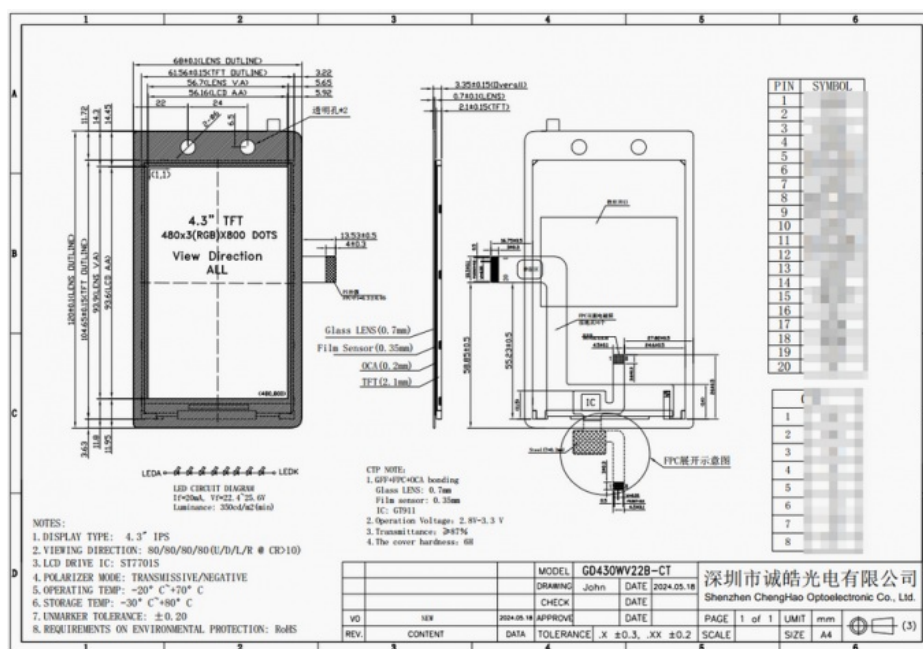
The CH430WV22A-CT module is equipped with numerous advanced features and functions.

One of its leading options is touch feedback, which provides users with a more intuitive and tactile interface, improving their user experience.

In addition, the module offers sunlight readability, ensuring that the screen remains easily readable even in strong outdoor lighting conditions.

Another great advantage is the module's wide temperature range, which enables outstanding functionality and performance from -20°C to +70°C.

Lastly, the module provides users with wide viewing angles, permitting them to observe the screen effortlessly from various positions and angles, without any negative impacts to their visual experience.



### About Customization:

CH430WV22A-CT is a 4.3-inch full color touch display designed by Chenghao Optoelectronic for face recognition devices. Some functional parameters of the display can be modified and customized according to customer requirements. Customization projects include but are not limited to the following:

- (1) Custom interface
- (2) Modify backlight brightness

- (3) Design and customize FPC
- (4) Design and customize touch glass cover
- (5) Screen anti-glare
- (6) 20000~50000H Life-time

### Applications:

The CH430WV22A-CT module is a versatile display solution suitable for a wide range of application areas. Whether you need a display for medical equipment, industrial control, or household use, this module offers excellent performance and reliable functionality.

With its versatility and stability, this module is an ideal choice for numerous industries. It can meet the display requirements of various applications and ensure that they operate smoothly and efficiently.

Whether you need a display for a new product or an existing system, the CH430WV22A-CT module is a top-quality option that can help you achieve your goals. Its excellent display performance and reliable functionality make it a valuable addition to any industry or sector.

Module Specifications

### FAQ:

Q: What is the brand name of this IPS LCD display?

A: The brand name of this display is Chenghao Optoelectronic.

Q: What is the model number of this IPS LCD display?

A: The model number of this display is CH430WV22A-CT.

Q: Where is this IPS LCD display manufactured?

A: This display is manufactured in Shenzhen, China.

Q: What certifications does this IPS LCD display have?

A: This display is certified with CE and RoHS.

Q: What is the minimum order quantity for this IPS LCD display?

A: The minimum order quantity for this display is 100 pieces.

Q: How is this IPS LCD display packaged?

A: All the products are packed in right way to keep it safe. For small sizes of products we use tray + carton, For bigger sizes we use foam slot + carton. We also design packages according to customers' requirements.

Q: What is the delivery time for this IPS LCD display?

A: The delivery time for this display is 7-15 working days.

Q: What is the supply ability for this IPS LCD display?

A: The supply ability for this display is 300Kpcs/month.



**Shenzhen ChengHao Optoelectronic Co., Ltd.**



+86 755-27806536



add@chenghaolcm.com



chenghaolcd.com

7th floor, building C5, Hengfeng Industrial City, Hangcheng street, Bao'an District, Shenzhen