



ST7701 Driver IC 500 Cd/M2 4.3 Inch IPS TFT LCD Display For Touch Panel Applications

Our Product Introduction

for more products please visit us on chenghaolcd.com

Basic Information

- Place of Origin: China, Shenzhen
- Brand Name: Chenghao Optoelectronic
- Certification: CE RoHS
- Model Number: CH430WV22A-CT
- Minimum Order Quantity: 100 Pcs
- Packaging Details: All the products are packed in right way to keep it safe. For small sizes of products we use tray + carton, For bigger sizes we use foam slot + carton. we also design packages according to customers' requirements
- Delivery Time: 7-15 working days
- Supply Ability: 300Kpcs/month



Product Specification

- Product Name: 4.3 Inch IPS TFT LCD Display
- Operating Temperature: -20 ~ +70
- FPC Pin Number: 20
- Module Size: 68*120*3.35 Mm
- Active Area: 56*93
- Driver IC: ST7701
- Touch Panel Interface: I2C
- Viewing Area: 57*94 Mm
- Brightness: 500 Cd/m2
- Highlight: TFT LCD Display For Touch Panel ,
4.3 Inch TFT LCD Display ,
500 Cd/M² TFT LCD Display



More Images



Product Description

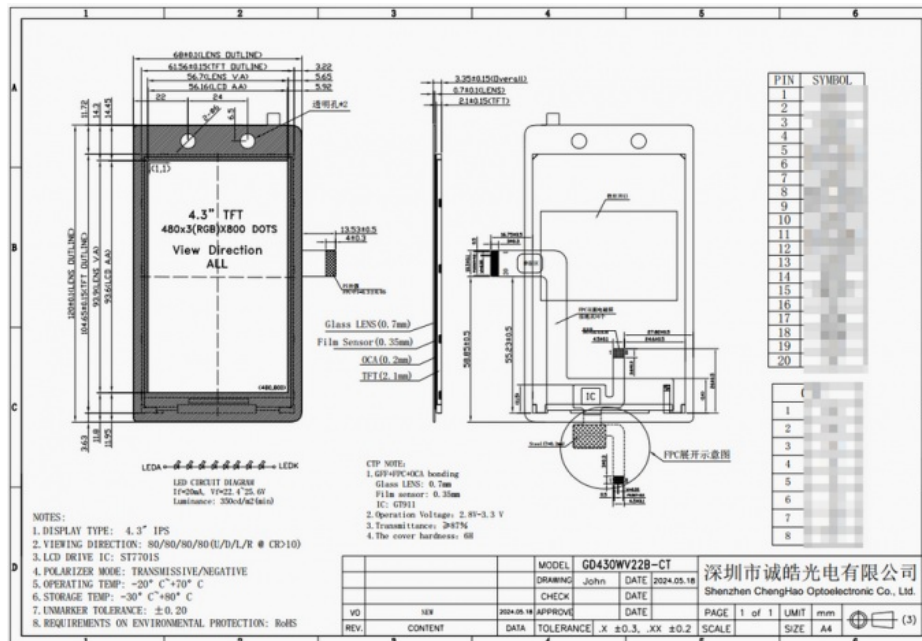
Product Description:

The CH430WV22A-CT is a powerful 4.3-inch TFT LCD module that offers remarkable performance and functionality. This module features an IPS/transmissive/normal black display mode, which provides for a high accuracy and consistent image performance. It delivers an impressive resolution of 480*800 pixels, which makes for sharp and vivid image displays. This module boasts of a viewing angle of 80/80/80/80, a contrast ratio of 800, and a brightness of 500 cd/m², which means that it is capable of delivering unbeatable visual experiences in various environments. It has a highly efficient MIPI interface, which supports over 16 million colors. With dimensions measuring 68*120*3.35mm, the module has an active area of 56*93mm and a viewing area of 57*94mm. With the CH430WV22A-CT, you are guaranteed of pristine images thanks to its impressive performance and features. Its remarkable resolution and contrast ratio, combined with excellent color support and a wide viewing angle, make it an ideal choice for applications that require clear and vivid image displays. The module is also compact and lightweight, making it an ideal choice for space constrained applications.



Features:

The module CH430WV22A-CT is characteristic of various features and functionalities. Touch feedback is one of its highlights, offering users a more intuitive interface to operate. In addition, this module is designed to be sunlight readable, ensuring clear visibility even under strong light. Furthermore, it is capable of supporting a wide temperature range, enabling proper operation between -20°C and +70°C of temperature. Lastly, the module provides broad viewing angles, which gives users the freedom to view the screen from diverse angles without blocking the content display.



Technical Parameters:

| | |
|-------------------|-----------------------|
| Module No | CH430WV22A-CT |
| Resolution | 480x800 dots |
| Viewing Direction | 80/80/80/80 |
| Luminance | 500 cd/m ² |

| | |
|-----------------------|--------------|
| Operating Temperature | -20 ~ +70 °C |
| Module Interface | MIPI |

Applications:

The CH430WV22A-CT module is a highly adaptable display module that is well-suited for a wide range of applications. Whether it be for medical equipment, industrial control, or household use, this module provides exceptional display performance and reliable functionality. Compared to other display modules, its versatility and stability make it an ideal choice for numerous industries. This module is capable of operating seamlessly in a variety of environments, making it a popular choice for many companies.

With its superior display technology and advanced features, the CH430WV22A-CT module is designed to meet the needs of a diverse range of customers. It provides users with a premium display experience that is both reliable and user-friendly, making it an excellent choice for any organization.

Key Features:

- Exceptional display performance
- Reliable functionality
- Highly adaptable for various applications
- Superior display technology
- Advanced features

FAQ:

Q: What is the supplier's name of this IPS LCD Display?

A: The supplier's name of this IPS LCD Display is Chenghao Optoelectronic.

Q: What is the model number of this IPS LCD Display?

A: The model number of this IPS LCD Display is CH430WV22A-CT.

Q: Where is this IPS LCD Display manufactured?

A: This IPS LCD Display is manufactured in Shenzhen, China.

Q: What certifications does this IPS LCD Display have?

A: This IPS LCD Display has CE and RoHS certifications.

Q: What is the minimum order quantity for this IPS LCD Display?

A: The minimum order quantity for this IPS LCD Display is 100 pieces.

Q: How is this IPS LCD Display packaged?

A: All the products are packed in the right way to keep it safe. For small sizes of products, we use tray + carton, and for bigger sizes, we use foam slot + carton. We also design packages according to customers' requirements.

Q: What is the delivery time for this IPS LCD Display?

A: The delivery time for this IPS LCD Display is 7-15 working days.

Q: What is the supply ability for this IPS LCD Display?

A: The supply ability for this IPS LCD Display is 300Kpcs/month.



Shenzhen ChengHao Optoelectronic Co., Ltd.



+86 755-27806536



add@chenghaolcm.com



chenghaolcd.com

7th floor, building C5, Hengfeng Industrial City, Hangcheng street, Bao'an District, Shenzhen