



## 7-inch TFT LCD Module 800x480 White LED Backlight Display IPS Panel For Wide Viewing Angle

### Our Product Introduction

for more products please visit us on [chenghaolcd.com](http://chenghaolcd.com)

#### Basic Information

- Place of Origin: China Shenzhen
- Brand Name: Chenghao Optoelectronic
- Certification: CE RoHS FCC
- Model Number: CH700WV10A-LB
- Minimum Order Quantity: 100 pcs
- Packaging Details: All the products are packed in right way to keep it safe. For small sizes of products we use tray + carton, For bigger sizes we use foam slot + carton. we also design packages according to customers' requirements
- Delivery Time: 3~7 Days
- Payment Terms: TT or Others
- Supply Ability: 50000000 pcs/month



#### Product Specification

- Module Type: 7"TFT +CTP
- Display Size: 7 Inch
- Display Resolution: 800\*480 Dots
- Display Operating Temperature: -20 °C ~ +70°C
- Display Backlight: White LED
- Display Viewing Angle: 85/85/85/85
- Display Mode: IPS/Transmissive/Normally Black
- Module Interface: RGB
- Product Name: 7-inch TFT LCD Module
- Highlight: **IPS Panel TFT LCD Module ,  
7-inch TFT LCD Module ,  
800x480 TFT LCD Module**



#### More Images





## Product Description

### Product Description:

Product Name: CH700WV10A-LB 7-inch High Brightness Custom LCD Module

We are excited to introduce the CH700WV10A-LB, a custom 7-inch LCD module manufactured by Chenghao Optoelectronic. This module features an IPS/Transmissive/Normally Black display mode, which provides excellent viewing angles and a resolution of 800x480 pixels.

The CH700WV10A-LB module boasts a luminance of 600 cd/m<sup>2</sup>, allowing for great visibility even in well-lit outdoor environment. This feature makes it the perfect choice for outdoor applications and scenarios where a clear view is required in well-lit conditions.

The module supports a 16M color display, delivering vivid and lifelike images and videos, while enabling free viewing angles to ensure clear visibility from different perspectives.

Operating within a temperature range of -20°C to +70°C and a storage temperature range of -30°C to +80°C, the CH700WV10A-LB module is designed to operate reliably in various environmental conditions, making it suitable for a wide range of applications.

Equipped with a capacitive touch panel, the module enables touch feedback and provides a seamless human-computer interaction experience. This feature makes it easier for users to interact with devices through the touch screen, enhancing convenience and usability.

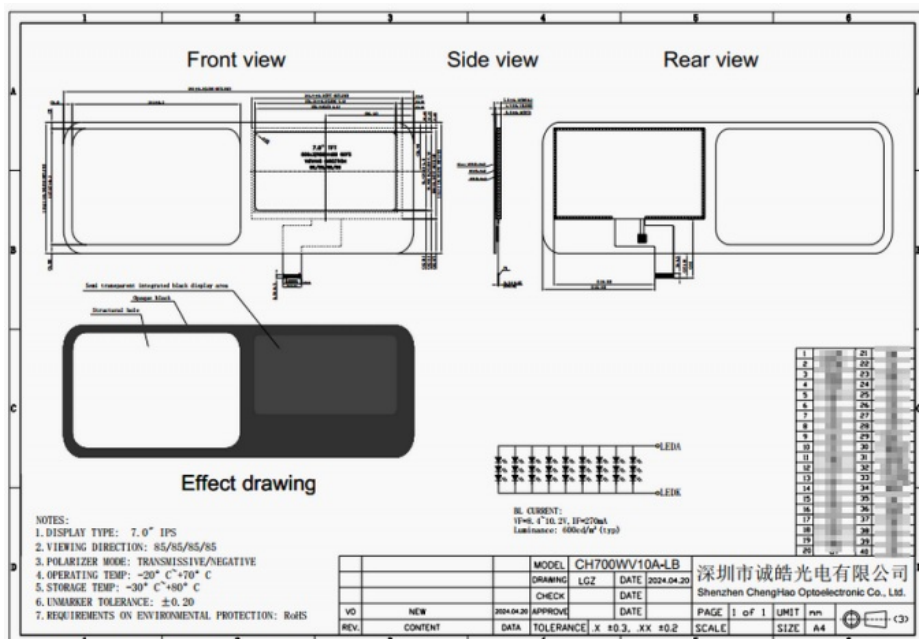
The CH700WV10A-LB module has dimensions of 383\*144\*7.5 mm, making it suitable for various installation requirements. It features a 40-pin FPC (Flexible Printed Circuit) interface, allowing easy connectivity with other devices using an RGB interface.

As a product from Chenghao Optoelectronic, the CH700WV10A-LB module adheres to the highest quality standards, ensuring reliability and stability. We are committed to providing our customers with unique, innovative, cost-effective, and market-leading LCD module solutions.

If you require an outdoor display solution or need better visibility in bright environments, the CH700WV10A-LB module is your ideal choice. Please contact us for more information and customization options regarding the CH700WV10A-LB module.

### Technical Parameters:

Module No	CH700WV10A-LB
Module Type	7" TFT+CTP
Display Mode	IPS/Transmissive/Normally Black
Viewing Direction	85/85/85/85
Number of dots	800*480
Brightness	600 cd/m <sup>2</sup>
Module Interface	RGB
Operating Temperature	-20 ~ +70°C
Color	16 M



## Applications:

The CH700WV10A-LB display module is a highly customizable display component designed specifically for laboratory testing instruments. However, its functional parameters can be easily modified to cater to the needs of different industries.

The CH700WV10A-LB finds extensive applications in various fields, including communication devices, household appliances, industrial control, medical equipment, instrumentation, automotive equipment, digital devices, wearable devices, and IoT devices.

Here are some specific application areas of the CH700WV10A-LB display module in different industries:

**GPS navigation:** The CH700WV10A-LB display module can be used in in-car GPS navigation systems, providing a clear navigation interface.

**Digital photo frames:** This display module can be utilized in digital photo frames, showcasing high-quality photos and videos.

**Medical equipment:** The CH700WV10A-LB display module can be applied in medical devices such as heart rate monitors, forehead thermometers, etc., offering reliable display performance.

**Industrial control:** This display module is suitable for industrial control equipment, such as industrial displays and instruments.

**Smart home devices:** The CH700WV10A-LB display module can be used in smart coffee machines, smart refrigerators, kitchen range hoods, and other smart home devices, providing an intuitive user interface.

**Security identification devices:** This display module is suitable for smart access control systems, card readers, and other security identification devices.

**Vending machines:** The CH700WV10A-LB display module can be utilized in vending machines, providing product information and an interactive interface.

Overall, the CH700WV10A-LB display module is a versatile component suitable for multiple industries. It offers high-quality display performance and reliable functionality, meeting the diverse needs of different industries.

## FAQ

**Q: What is the lcd Manufacturer's name of this LCD Display Module?**

A: The Manufacturer's name of this LCD Display Module is Chenghao Optoelectronic.

**Q: What is the model number of this LCD Display Module?**

A: The model number of this LCD Display Module is CH700WV10A-LB.

**Q: Where is this LCD Display Module manufactured?**

A: This LCD Display Module is manufactured in Shenzhen, China.

**Q: What certifications does this LCD Display Module have?**

A: This LCD Display Module has CE, RoHS, and FCC certifications.

**Q: What is the minimum order quantity for this LCD Display Module?**

A: The minimum order quantity for this LCD Display Module is 100 pieces.

**Q: What are the packaging details for this LCD Display Module?**

A: All the products are packed in the right way to keep them safe. For small sizes of products, we use tray + carton, for bigger sizes we use foam slot + carton. We also design packages according to customers' requirements.

**Q: What are the payment terms for this LCD Display Module?**

A: The payment terms for this LCD Display Module are TT or others.

**Q: What is the supply ability for this LCD Display Module?**

A: The supply ability for this LCD Display Module is 50000000 pcs/month.



**Shenzhen ChengHao Optoelectronic Co., Ltd.**



+86 755-27806536



add@chenghaolcm.com



chenghaolcd.com

7th floor, building C5, Hengfeng Industrial City, Hangcheng street, Bao'an District, Shenzhen