



600 Cd/m2 Brightness LCD Display Module 7 inch 16.7M Colors 800 High Contrast Ratio

Our Product Introduction

for more products please visit us on chenghaolcd.com

Basic Information

- Place of Origin: China Shenzhen
- Brand Name: Chenghao Optoelectronic
- Certification: CE RoHS FCC
- Model Number: CH700WV10A-LB
- Minimum Order Quantity: 100 pcs
- Packaging Details: All the products are packed in right way to keep it safe. For small sizes of products we use tray + carton, For bigger sizes we use foam slot + carton. we also design packages according to customers' requirements
- Delivery Time: 3~7 Days
- Payment Terms: TT or Others
- Supply Ability: 50000000 pcs/month



Product Specification

- Product Name: LCD Display Module
- Display Brightness: 600 Cd/m2
- Color: 16.7M
- Display Contrast Ratio: 800:1
- Display Life Span: 50000H
- Display Operating Temperature: -20 °C ~ +70°C
- Touch Panel Type: Capacitive
- Display Viewing Angle: 85/85/85/85
- Display Size: 7 Inch
- Highlight: 16.7M Colors LCD Display Module,
7 inch LCD Display Module,
600 Cd/m2 LCD Display Module



More Images





Product Description

Product Description:

Module Name: 7 inch High Brightness Custom LCD Module

The 7 inch High Brightness Custom LCD Module is a high-quality display module designed for various applications. This module has a Module No of CH700WV10A-LB and a display mode of IPS/Transmissive/Normally Black, providing a clear and bright display. It has a resolution of 800*480 dots and a viewing direction of 85/85/85/85, ensuring clear display at different angles.

The module boasts an 800 contrast ratio and a 600 cd/m2 luminance, making the display brighter and clearer. The module interface is RGB and supports a color range of 16M. The module's size is 383*144*7.5 mm with an active area of 153*85 mm and a view area of 154*86mm.

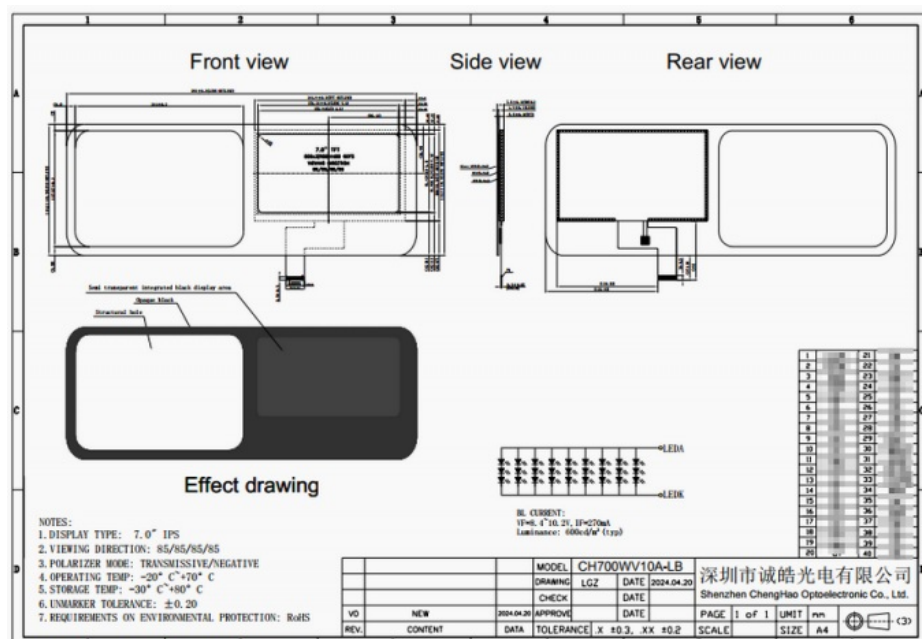
The 7 inch High Brightness Custom LCD Module can operate within a temperature range of -20 ~ +70 °C, making it suitable for various environments. It also has a wide temperature storage range of -30 ~ +80 °C to ensure the longevity of the module. The FPC pin number is 40 pins, and the touch panel type is capacitive, making it easy to use.

Module Model	CH700WV10A-LB
Number of dots	800x480
Viewing Direction	85/85/85/85
Storage Temperature	-30 ~ +80°C
Luminance	600 nits
TP Type	Capacitive
Module Interface	RGB

Technical Parameters:

We are thrilled to introduce the CH700WV10A-LB, an exceptional custom LCD module featuring a high brightness 7-inch display with superior image quality and resolution capability. The module is manufactured by Chenghao Optoelectronic, a company that prides itself on delivering high-quality display solutions.

The CH700WV10A-LB module features an IPS/Transmissive/Normally Black display mode that offers exceptional viewing angles from any viewing Direction with a resolution of 800x480 pixels. The 7-inch LCD has a luminance of 600cd/m2, making it suitable for a diverse range of outdoor applications and scenarios that require bright conditions.



The CH700WV10A-LB module is designed to function effortlessly in extreme environmental conditions. Operating within a range of -20°C to +70°C and a storage temperature range of -30°C to +80°C, the module can withstand a broad range of temperatures. This makes it suitable for a wide range of applications requiring a reliable display solution.

The CH700WV10A-LB module's capacitive touch panel allows users to provide touch feedback, and it provides a smooth interaction experience. This feature increases convenience and usability, as users can easily interact with devices through the touch screen.

Above all, the CH700WV10A-LB module is a high-quality product that adheres to the highest industry standards in reliability, quality, and stability. Our primary objective as Chenghao Optoelectronic is to provide our customers with unique, innovative, cost-effective, and market-leading display solutions.

If you need an adequate outdoor display solution or require clear visibility in bright environments, the CH700WV10A-LB module is the best choice. Please contact us for more information and customization options regarding the CH700WV10A-LB module.

Applications:

The CH700WV10A-LB is a customized display module that is designed specifically for laboratory testing instruments. However, this display module also has flexible functional parameters that can be tailored to suit the requirements of various industries.

The CH700WV10A-LB display module is widely used in many different industries, including communication devices, household appliances, industrial control, medical equipment, instrumentation, automotive equipment, digital devices, wearable devices, and IoT devices.

There are several specific applications of the CH700WV10A-LB display module in different industries:

GPS navigation: The CH700WV10A-LB display module can be utilized in in-car GPS systems, providing a clear and intuitive navigation interface.

Digital photo frames: This display module is suitable for digital photo frames, showcasing high-quality photos and videos.

Medical equipment: The CH700WV10A-LB display module can be applied in medical devices such as heart rate monitors, forehead thermometers, etc., offering reliable and accurate display performance.

Industrial control: This display module is perfect for industrial control equipment, such as industrial displays and instruments.

Smart home devices: The CH700WV10A-LB display module can be used in smart coffee machines, smart refrigerators, kitchen range hoods, and other smart home devices, providing an intuitive user interface.

Security identification devices: This display module is suitable for smart access control systems, card readers, and other security identification devices.

Vending machines: The CH700WV10A-LB display module can be used in vending machines, providing product information and an interactive interface.

In conclusion, the CH700WV10A-LB display module can be easily customized to cater to the requirements of various industries. Whether in laboratory testing instruments or other industry applications, this display module offers high-quality display performance and reliable functionality, meeting the diverse needs of different industries.

FAQ:

Q1: What is the model number of the LCD Display Module?

A1: The model number of the LCD Display Module is CH700WV10A-LB.

Q2: Where is the LCD Display Module manufactured?

A2: The LCD Display Module is manufactured in China, specifically in Shenzhen.

Q3: What certifications does the LCD Display Module have?

A3: The LCD Display Module is certified by CE, RoHS, and FCC.

Q4: What are the packaging details for the LCD Display Module?

A4: All the products are packed in the right way to keep it safe. For small sizes of products, we use tray + carton. For bigger sizes, we use foam slot + carton. We also design packages according to customers' requirements.



Shenzhen ChengHao Optoelectronic Co., Ltd.



+86 755-27806536



add@chenghaolcm.com



chenghaolcd.com

7th floor, building C5, Hengfeng Industrial City, Hangcheng street, Bao'an District, Shenzhen