



1024*600 Pixels IPS LCD Screen Touch Module With I2C Interface Transmissive Display Mode

Our Product Introduction

for more products please visit us on chenghaolcd.com

Basic Information

- Place of Origin: China Shenzhen
- Brand Name: Chenghao Optoelectronic
- Certification: RoHS CE FCC
- Model Number: CH700WS10E-CTF
- Minimum Order Quantity: 100 pcs
- Packaging Details: All the products are packed in right way to keep it safe. For small sizes of products we use tray + carton, For bigger sizes we use foam slot + carton. we also design packages according to customers' requirements
- Delivery Time: 3~7 Days
- Payment Terms: TT
- Supply Ability: 300K pcs/month



Product Specification

- Product Name: 7.0 Inch 1024*600 Pixels Small Touch Screen Display Module
- Operating Temperature: -20°C~70°C
- Contrast Ratio: 800
- Display Mode: IPS/Normally Black/Transmissive
- Touch Panel Interface: I2C
- Lcm Interface: RGB
- FPC Pin Numbers: 50 Pins
- Viewing Direction: 80/80/80/80
- Highlight: 1024*600 Pixels LCD Screen Touch Module, IPS LCD Screen Touch Module, I2C Interface LCD Screen Touch Module



More Images





Product Description

Product Description:

ChengHao Display Model: CH700WS10E-CTF

The CH700WS10E-CTF is a color active matrix thin film transistor (TFT) liquid crystal display (LCD) module that utilizes amorphous silicon TFT as the switching device. This module includes a touch glass cover, TFT LCD panel, driver IC, backlight, and FPC.

The touch glass cover consists of a capacitive touch module and tempered glass panel. The capacitive touch module supports multi-touch and communicates with external devices through an I2C interface. The tempered glass panel is customized based on the installation requirements of the customer's equipment, ensuring a perfect fit.

The TFT LCD has an active display area of 7.0 inches (measured diagonally) with a resolution of 1024*600*3-RGB. The driver for this module is mounted on the glass and can display 16 million colors through the RGB signal input. The driver is interconnected through components like FPC to drive the display module.

This backlight assembly features 27 white LED beads that produce a backlight brightness of over 1000 cd/m2 brightness. The CH700WS10E-CTF is compliant with RoHS standards and is halogen-free.

Module No	CH700WS10E-CTF
Number of dots	1024*600*3(RGB)
Luminance	1000 cd/m2
Module Interface	RGB
Touch Type	I2C

Features:

Sunlight Readable

The CH700WS10E-CTF screen has a backlight component that can produce an impressive 1000cd/m2 luminance. This characteristic makes the screen sunlight readable, and ensures that users can view the screen clearly even in an outdoor environment with a certain intensity of light. You don't have to worry about glare impairing your viewing experience.

Free Viewing Angle

This display touch screen adopts IPS display mode, which allows for a super high contrast ratio. This means that users can get very good clarity when reading the screen at any viewing angle. You don't need to adjust your position or angle to see the screen clearly, you can view it from any position without any picture quality loss.

Capacitive Touch

In addition to being sunlight-readable with a free viewing angle, the module surface is equipped with a capacitive touch glass cover. This innovative touch technology supports human-computer interaction and allows users to interact easily and intuitively with the screen. Simply touch the screen to perform functions, making it an ideal addition for a variety of applications.

Technical Parameters:

Module Information

The module number is CH700WS10E-CTF.

The display mode is Transmissive/IPS/Normally Black.

The module has 1024x600 dots.

The luminance of the screen is 1000 cd/m2.

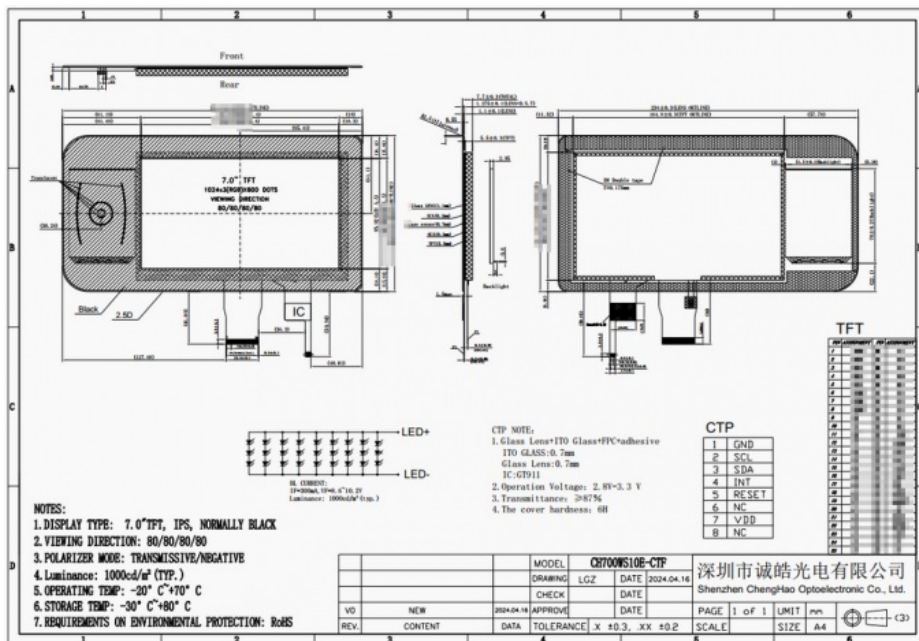
The touch type used is Capacitive and the touch interface used is I2C.

The operating temperature range is from -20 to +70 °C and the storage temperature range is from -30 to +80°C.

The module interface used is RGB.

The module is able to produce up to 16 million colors.

To summarize, the module numbered CH700WS10E-CTF has a transmissive/IPS/normally black display mode with 1024x600 dots and a luminance of 1000 cd/m2. It uses a capacitive touch type with I2C touch interface and has an operating temperature range of -20 to +70 °C and a storage temperature range of -30 to +80°C. The module interface used is RGB, and it is able to produce up to 16 million colors.



Applications:

Chenghao Optoelectronics CH700WS10E-CTF is a cutting-edge full-color touch screen module designed for home washing machines. This state-of-the-art module is a popular choice among our customers due to its superior functionality and reliability. At Chenghao Optoelectronics, we understand that different customers may have unique requirements. Therefore, we offer the option to modify and customize certain parameters of the display module according to their needs. This ensures that our module provides optimal performance and seamless integration in its specific application. Our CH700WS10E-CTF full-color touch screen module is versatile and can be applied to a variety of fields and equipment. The module can facilitate the smooth operation of many industries, including:

- Industrial Control
- Home Appliances
- Medical Equipment
- Laboratory Instruments
- IoT Devices
- Artificial Intelligence
- Automotive Transportation

FAQ:

Q: What is the brand name of this product?

A: The brand name of this product is Chenghao Optoelectronic.

Q: What is the model number of this product?

A: The model number of this product is CH700WS10E-CTF.

Q: Where is this product made?

A: This product is made in China Shenzhen.

Q: What certifications does this product have?

A: This product has certifications including RoHS, CE, and FCC.

Q: What is the minimum order quantity for this product?

A: The minimum order quantity for this product is 100 pcs.

Q: What is the packaging like for this product?

A: All the products are packed in the right way to keep them safe. For small sizes of products, we use tray + carton, and for bigger sizes, we use foam slot + carton. We also design packages according to customers' requirements.

Q: What is the delivery time for this product?

A: The delivery time for this product is 3~7 days.

Q: What are the payment terms for this product?

A: The payment terms for this product are TT.

Q: What is the supply ability for this product?

A: The supply ability for this product is 300K pcs/month.



Shenzhen ChengHao Optoelectronic Co., Ltd.



+86 755-27806536



add@chenghaolcm.com



chenghaolcd.com

7th floor, building C5, Hengfeng Industrial City, Hangcheng street, Bao'an District, Shenzhen