

Capacitive 7.0 Inch Small LCD Touch Screen 1024*600 Pixels RGB Interface

Our Product Introduction

for more products please visit us on chenghaolcd.com

Basic Information

- Place of Origin: China Shenzhen
- Brand Name: Chenghao Optoelectronic
- Certification: RoHS CE FCC
- Model Number: CH700WS10E-CTF
- Minimum Order Quantity: 100 pcs
- Packaging Details: All the products are packed in right way to keep it safe. For small sizes of products we use tray + carton, For bigger sizes we use foam slot + carton. we also design packages according to customers' requirements
- Delivery Time: 3~7 Days
- Payment Terms: TT
- Supply Ability: 300K pcs/month



Product Specification

- Operating Temperature: -20°C~70°C
- Storage Temperature: -30°C~80°C
- FPC Pin Numbers: 50 Pins
- Product Name: 7 Inch Tft Lcd
- Viewing Direction: 80/80/80/80
- Display Mode: IPS/Normally Black/Transmissive
- Touch Type: Capacitive
- Contrast Ratio: 800
- Highlight: 1024*600 Pixels Small LCD Touch Screen, RGB Interface Small LCD Touch Screen, Capacitive Small LCD Touch Screen



More Images





Product Description

Product Description:

The ChengHao Display model CH700WS10E-CTF is a liquid crystal display (LCD) module that utilizes an amorphous silicon TFT as a switching device. It is a color active matrix TFT and consists of a driver IC, backlight, FPC, TFT LCD panel, and a touch glass cover. The touch glass cover is composed of a capacitive touch module and a tempered glass panel. The former is equipped with I2C communication interface and supports multi-touch functionality. The latter is designed following the requirements of the customer's equipment for a perfect fit.

Module Type	7" TFT LCD+CTP	--
Viewing Direction	80/80/80/80	--
Interface	RGB	--
Touch Type	CTP	--
Resolution	1024x600	dots
Brightness	1000	cd/m2

This TFT LCD panel has a resolution of 1024*600*3-RGB and has an active display area of 7.0 inches measured diagonally. The driver is located on the glass and supports the display of up to 16M colors through RGB signal input. It is connected through components such as FPC to drive the display module.

The backlight assembly of this module has 27 white LED beads that can produce a backlight brightness of more than 1000 cd/m2. Additionally, it is RoHS compliant and halogen-free, ensuring the safety and environmental protection of the product.

Features:

Sunlight Readable

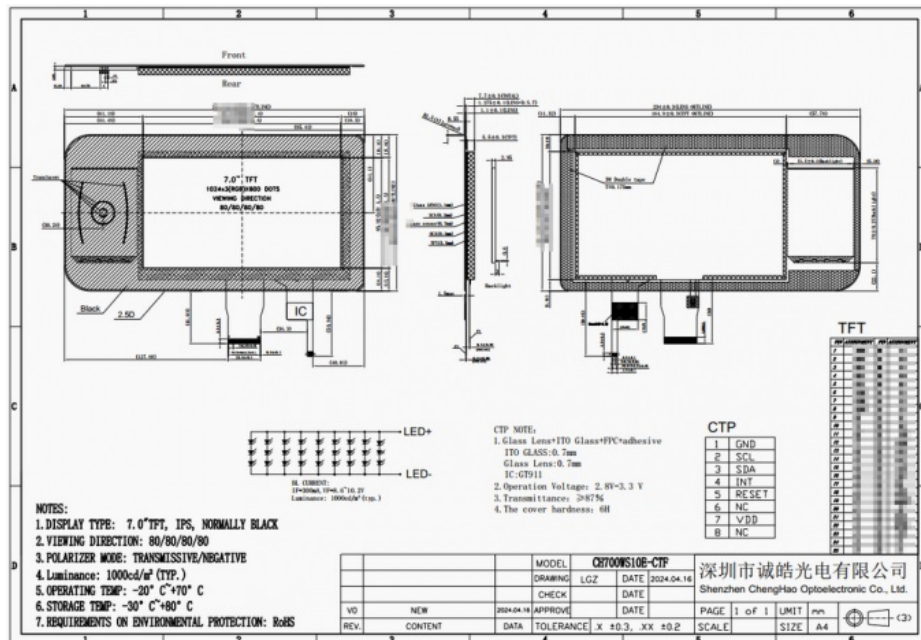
The CH700WS10E-CTF display is designed to provide excellent visibility in sunny conditions. With its backlight assembly, it can produce 1000cd/m2 brightness, making it easy to read the screen even in bright sunlight. This means that users can get a clear viewing angle when reading the screen in an outdoor environment with a certain light intensity.

Free Viewing Angle

This monitor touch screen adopts IPS display mode with ultra-high contrast, which means that users can read the screen in a very clear way at any viewing angle.

Capacitive Touch

The CH700WS10E-CTF module surface is equipped with a capacitive touch glass cover, which supports multi-touch and is an important medium for the device to achieve human-computer interaction.



Applications:

Chenghao Optoelectronics has launched a full-color touch screen module CH700WS10E-CTF designed for home appliances. The module has been carefully designed to provide the highest level of precision and functionality, making it an ideal solution for this demanding application.

At Chenghao Optoelectronics, we believe that customization is key to meeting the unique needs of our customers. Therefore, we offer the option to modify and customize certain parameters of the display module according to customer requirements. This ensures that the touch screen module can be applied to a wide range of applications and devices.

The CH700WS10E-CTF full-color touch screen module is suitable for many fields and devices such as industrial control, home appliances, medical equipment, laboratory instruments, IoT devices, artificial intelligence, and automotive transportation. The versatility and high-quality performance of this module make it an excellent choice for a range of applications.

FAQ:

Here are some frequently asked questions and answers about our Small LCD Touch Screen:

Q: What is the Manufacturer's name of this product?

A: The Manufacturer's name is Chenghao Optoelectronic.

Q: What is the model number of this product?

A: The model number is CH700WS10E-CTF.

Q: Where is this product made?

A: This product is made in China Shenzhen.

Q: What certifications does this product have?

A: This product has RoHS, CE, and FCC certifications.

Q: What is the minimum order quantity for this product?

A: The minimum order quantity is 100 pcs.

Q: How is this product packaged?

A: All the products are packed in the right way to keep them safe. For small sizes of products, we use tray + carton, for bigger sizes we use foam slot + carton. We also design packages according to customers' requirements.

Q: What is the delivery time for this product?

A: The delivery time is 3~7 days.

Q: What are the payment terms for this product?

A: The payment terms are TT.

Q: What is the supply ability for this product?

A: The supply ability is 300K pcs/month.



Shenzhen ChengHao Optoelectronic Co., Ltd.



+86 755-27806536



add@chenghaolcm.com



chenghaolcd.com

7th floor, building C5, Hengfeng Industrial City, Hangcheng street, Bao'an District, Shenzhen