



1000cd/M2 High Brightness LCD Touch Screen 7" 480x800 Pixels IPS Display

Our Product Introduction

for more products please visit us on chenghaolcd.com

Basic Information

- Place of Origin: China Shenzhen
- Brand Name: Chenghao Optoelectronic
- Certification: RoHS CE FCC
- Model Number: CH700WS10E-CTF
- Minimum Order Quantity: 100 pcs
- Packaging Details: All the products are packed in right way to keep it safe. For small sizes of products we use tray + carton, For bigger sizes we use foam slot + carton. we also design packages according to customers' requirements
- Delivery Time: 3~7 Days
- Payment Terms: TT
- Supply Ability: 300K pcs/month



Product Specification

- Product Name: 7" LCD Touch Screen
- FPC Pin Numbers: 50 Pins
- Lcm Interface: RGB
- Touch Panel Interface: I2C
- Resolution: 480*800 Pixels
- Luminance: 1000 Cd/m2
- Viewing Direction: 80/80/80/80
- Display Mode: IPS/Normally Black/Transmissive
- Operating Temperature: -20°C~70°C
- Highlight: IPS Display LCD Touch Screen ,
1000cd/M2 LCD Touch Screen ,
480x800 Pixels LCD Touch Screen



More Images





Product Description

Product Description:

ChengHao Display model CH700WS10E-CTF is a color active matrix thin film transistor (TFT) liquid crystal display (LCD) module that uses amorphous silicon TFT as a switching device. The module consists of various components, including a touch glass cover, TFT LCD panel, driver IC, backlight, and FPC.

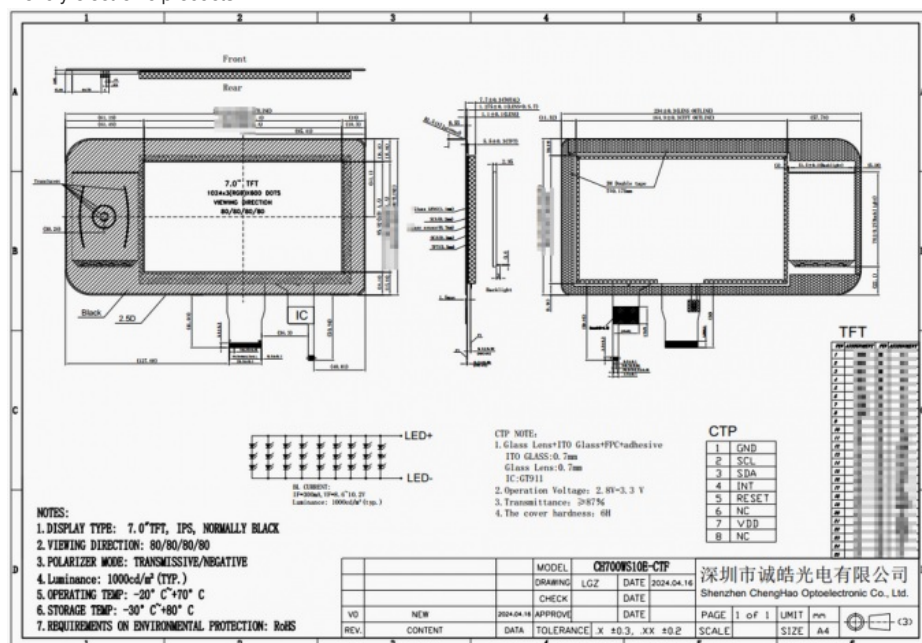
The touch glass cover included with this module includes a capacitive touch module and a tempered glass panel. The capacitive touch module is equipped with an I2C interface to communicate with external devices and also supports multi-touch.

The active display area of this TFT LCD is 7.0 inches (horizontally) measured diagonally, with a resolution of 1024*600*3-RGB, and has high-quality image presentation.

The driver of this LCD module is mounted on the glass and communicates with other components through the FPC. The R.G.B signal is input to the driver to drive the LCD screen to display 16M colors. Supports RGB interface.

The backlight assembly uses 27 white LED lamp beads, which can produce a backlight brightness of more than 1000 cd/m2 Luminance.

In addition, this model complies with RoHS and halogen-free regulations, which can achieve more sustainable and environmentally friendly electronic products.



Features:

Sunlight Readable

The CH700WS10E-CTF display has been designed to have excellent readability in direct sunlight. With its backlight component, it is capable of producing 1000cd/m2 luminance, allowing users to view the screen clearly even in outdoor environments with high light intensity.

Free Viewing Angle

The display touch screen utilizes an IPS display mode, giving it a super high contrast ratio. As a result, users can enjoy crystal-clear visibility regardless of their viewing angle.

Capacitive Touch

The module surface of CH700WS10E-CTF is equipped with a capacitive touch glass cover, providing users a seamless and intuitive experience when interacting with the display.

Module Model	CH700WS10E-CTF
Resolution	1024x600 dots
Luminance	1000 nits (Optional)
TFT Module Interface	RGB
TP Type	Capacitive
TP Interface	I2C
Operating Temperature	-20 ~ +70°C

Applications:

Chenghao Optoelectronics CH700WS10E-CTF is a full-color touch screen module designed for smart home devices, with advanced technology, user-friendly interface and easy operation.

We understand that customers' needs and requirements for display modules vary, so we provide modification and customization services to ensure that our products can be used in a wide range of fields and devices.

CH700WS10E-CTF is suitable for a variety of industries, including industrial control, home appliances, medical equipment, laboratory instruments, IoT devices, artificial intelligence and automotive transportation. By modifying the parameters of the display module according to customer requirements, we can provide customized solutions that meet customer specific needs.

Packing and Shipping:

Product Packaging:

This small LCD touch screen will be carefully packaged to ensure its safe arrival. The product will be wrapped in bubble wrap and placed in a sturdy cardboard box with additional padding to prevent any damage during shipping.

Shipping:

For samples, We offer free standard shipping for this product which usually takes 3-15 business days for delivery.

FAQ:

Q1: What is the brand name of the small LCD touch screen?

A1: The brand name of the small LCD touch screen is Chenghao Optoelectronic.

Q2: What is the model number of the small LCD touch screen?

A2: The model number of the small LCD touch screen is CH700WS10E-CTF.

Q3: Where is the small LCD touch screen manufactured?

A3: The small LCD touch screen is manufactured in China Shenzhen.

Q4: What certifications does the small LCD touch screen have?

A4: The small LCD touch screen has RoHS, CE, and FCC certifications.

Q5: What is the minimum order quantity for the small LCD touch screen?

A5: The minimum order quantity for the small LCD touch screen is 100 pcs.

Q6: How is the small LCD touch screen packaged?

A6: All the products are packed in right way to keep it safe. For small sizes of products we use tray + carton, For bigger sizes we use foam slot + carton. we also design packages according to customers' requirements.

Q7: What is the delivery time for the small LCD touch screen?

A7: The delivery time for the small LCD touch screen is 3~7 days.

Q8: What are the payment terms for the small LCD touch screen?

A8: The payment terms for the small LCD touch screen are TT.

Q9: What is the supply ability for the small LCD touch screen?

A9: The supply ability for the small LCD touch screen is 300K pcs/month.



Shenzhen ChengHao Optoelectronic Co., Ltd.



+86 755-27806536



add@chenghaolcm.com



chenghaolcd.com

7th floor, building C5, Hengfeng Industrial City, Hangcheng street, Bao'an District, Shenzhen