



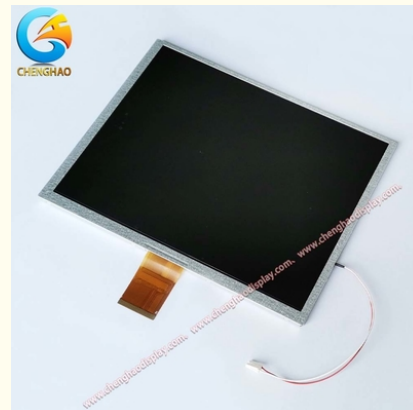
## Custom 10.4 Inch Display 60 Pins FPC 800\*480 Pixles With RGB Interface

### Our Product Introduction

for more products please visit us on [chenghaolcd.com](http://chenghaolcd.com)

#### Basic Information

- Place of Origin: China
- Brand Name: chenghao optoelectronic
- Certification: CE, ISO9001, Rose, SGS
- Model Number: CH104SV01A
- Minimum Order Quantity: 100 pcs
- Packaging Details: All the products are packed in right way to keep it safe. For small sizes of products we use tray + carton, For bigger sizes we use foam slot + carton. we also design packages according to customers' requirements
- Delivery Time: 3~7 Days
- Payment Terms: T/T, AliPay, PayPal
- Supply Ability: 50000000 pcs/month



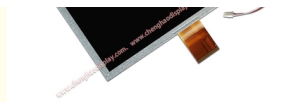
#### Product Specification

- Product Name: 10.4 Inch Display
- Operating Temperature: -20 ~+70 °C
- Active Area: 211.2\*158.4 Mm
- Display Area Size: 10.4 Inch
- Storage Temperature: -30 ~ +80 °C
- Interface: RGB
- Resolution: 800x600
- Contrast Ratio: 500
- Display Colors: 16M
- Highlight: Custom 10.4 Inch Display,  
60 Pins FPC 10.4 Inch Display,  
RGB Interface 10.4 Inch Display



#### More Images





## Product Description

### Product Description:

ChengHao Display Model CH104SV01A

The ChengHao Display model CH104SV01A is a liquid crystal display (LCD) that utilizes amorphous silicon thin film transistor (TFT) technology as a switching device. The display is full color and active matrix, and it is composed of a TFT LCD panel, a driving IC, a back-light, and FPC (flexible printed circuit) technology.

#### TFT LCD Features

10.4-inch diagonal active display area (horizontal screen)

800 x 600 x 3-RGB resolution

16M colors can be displayed via R.G.B. signal input using the \*\*\* or compatible driver

Driver is mounted on the glass and connected via FPC

RGB interface supported

#### Customization Options

In addition to the standard features, FPC can be customized to meet specific customer requirements. This includes modifications to the back-light and FPC structure, as well as interface definition.

Environmental Compliance

The CH104SV01A model is RoHS compliant and halogen-free, making it a more environmentally friendly option for electronic displays.

Module Name	CH104SV01A
Resolution	800*600 dots
Viewing Direction	12:00
Lcd Interface	RGB
Brightness	300 nits
Operating Temperature	-20~+70
Color	16M

### Features:

LCD panels have become the most widely used information display carrier in this century. They play an important role in various industries, and each of their functional parameters is closely related to the industry in which they are used. In the competition with many LCD panels of the same type, CH104SV01A stands out with its attractive price and superior product performance. The following are two notable features of this monitor:

First, it has a super long service life. As we all know, a key indicator of LCD life span is the brightness of the backlight LED. As the monitor ages, the backlight brightness gradually decreases. When the backlight brightness drops to half of its original brightness, the time it takes is the life of the backlight. At present, the life span of most LCD monitors on the market is usually 20000~3000H. The backlight service life of CH104SV01A is as long as 50000H, which significantly extends the service life of the LCD monitor.

Secondly, CH104SV01A is resistant to wide temperature environments. In order to improve the environmental adaptability of the display module, our engineers implemented a wide-temperature resistant design that can easily operate in an environment of -20~+70°C. This allows the monitor to run smoothly and easily cope with various harsh environments.

### Applications:

The CH104SV01A is a conventional LCD display that can be applied in various fields such as automotive transportation, medical equipment, industrial control, artificial intelligence, Internet of Things equipment, home appliances, and more. It is highly versatile and can be used in multiple different scenarios.

The display is commonly found in automotive central control systems, industrial operating consoles, AI robots, smart refrigerators, elevator equipment, medical B-ultrasound machines, among others. This is due to its flexible nature, making it an excellent choice for a variety of applications.

For example, used in automotive transportation, the CH104SV01A can be used for central control systems, displaying important information and controls to drivers. In industrial control, the display can be used as operational consoles, providing users with real-time information and controls.

Similarly, the display can be integrated into AI robots, allowing them to display vital data and information. In smart refrigerators, the screen can be used to display information regarding temperature control and the inventory of food. The elevator equipment can also incorporate the screen to show important information or even advertisements.

The medical field is another area where the CH104SV01A can be highly beneficial. Medical B-ultrasound machines can utilize the screen to display critical images and information to medical professionals, giving a clear and detailed view of the patient's condition.



## Support and Services:

Our TFT LCD monitor products come with best-in-class technical support and services to ensure optimal performance and customer satisfaction.

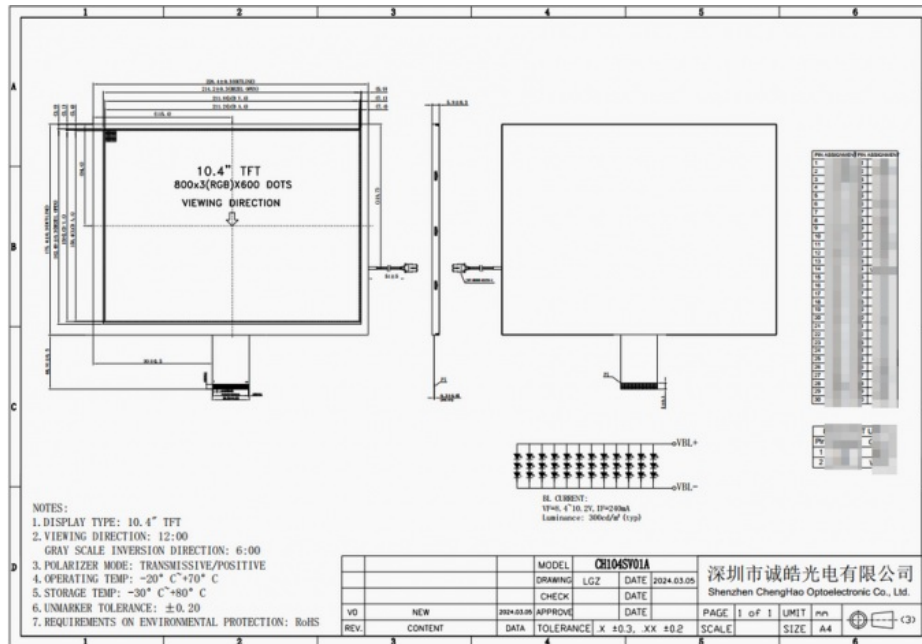
We provide comprehensive technical support and services, including:

Module design customization

Remote online technical support

Provide necessary software drivers

Our team of experienced technicians and customer service representatives can help you with any questions or concerns you have about our TFT LCD display products. We are committed to providing timely and effective support to help you maximize the value of your investment.



## FAQ:

**Q: What is the brand name of this TFT LCD Display?**

A: The brand name of this TFT LCD Display is chenghao optoelectronic.

**Q: What is the model number of this TFT LCD Display?**

A: The model number of this TFT LCD Display is CH104SV01A.

**Q: What is the place of origin of this TFT LCD Display?**

A: The place of origin of this TFT LCD Display is China.

**Q: What certifications does this TFT LCD Display have?**

A: This TFT LCD Display has CE, ISO9001, Rose, and SGS certifications.

**Q: What is the minimum order quantity for this TFT LCD Display?**

A: The minimum order quantity for this TFT LCD Display is 1 piece.

**Q: What are the packaging details for this TFT LCD Display?**

A: All the products are packed in the right way to keep them safe. For small sizes of products, we use tray + carton. For bigger sizes, we use foam slot + carton. We also design packages according to customers' requirements.

**Q: What is the delivery time for this TFT LCD Display?**

A: The delivery time for this TFT LCD Display is 3-7 days.

**Q: What are the payment terms for this TFT LCD Display?**

A: The payment terms for this TFT LCD Display are T/T, AliPay, and PayPal.

**Q: What is the supply ability for this TFT LCD Display?**

A: The supply ability for this TFT LCD Display is 50,000,000 pieces per month.



**Shenzhen ChengHao Optoelectronic Co., Ltd.**



+86 755-27806536



add@chenghaolcm.com



chenghaolcd.com

7th floor, building C5, Hengfeng Industrial City, Hangcheng street, Bao'an District, Shenzhen