



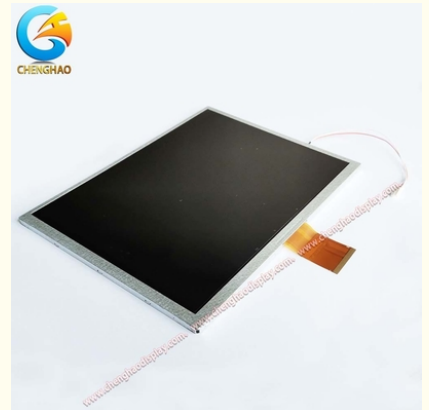
10.4 Inch TFT LCD Display 300cd/m2 Luminance with RoHS Certificate

Our Product Introduction

for more products please visit us on chenghaolcd.com

Basic Information

- Place of Origin: China
- Brand Name: chenghao optoelectronic
- Certification: CE, ISO9001, Rose, SGS
- Model Number: CH104SV01A
- Minimum Order Quantity: 100 pcs
- Packaging Details: All the products are packed in right way to keep it safe. For small sizes of products we use tray + carton, For bigger sizes we use foam slot + carton. we also design packages according to customers' requirements
- Delivery Time: 3~7 Days
- Payment Terms: T/T, AliPay, PayPal
- Supply Ability: 50000000 pcs/month

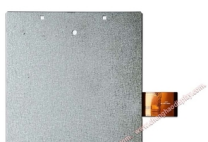


Product Specification

- Brightness: 300 Cd/m2
- Contrast Ratio: 500
- Response Time: 16 Ms
- Display Area Size: 10.4 Inch
- Operating Temperature: -20 ~+70 °C
- Outline Size: 228.4*175.4*5.9 Mm
- Active Area: 211.2*158.4 Mm
- Viewing Direction: 12:00
- Product Name: 10.4 Inch TFT LCD Display
- Highlight: 10.4 Inch TFT LCD Display, RoHS Certificate TFT LCD Display, 300cd/m2 TFT LCD Display



More Images





Product Description

Product Description:

The CH104SV01A is a TFT LCD display model manufactured by ChengHao Display. It is a full color active matrix LCD that uses amorphous silicon TFT as a switching device, and is composed of a TFT LCD panel, a driving IC, a back-light, and FPC. The active display area of this TFT LCD measures 10.4 inches diagonally, with a resolution of 800*600*3-RGB. The driver used for this model is the *** or compatible, which can display 16M colors by R.G.B. signal input. The driver is mounted on the glass, and the interconnection via FPC includes components to drive the display module. It also supports RGB interface. Additionally, the FPC can be customized to meet specific customer requirements, such as modifying the back-light and FPC structure, as well as defining the interface. This LCD display model is RoHS compliant and halogen-free.

Features:

As the information display carrier, LCD plays an important role in various industries. Different types of LCD have different functional parameters depending on the industry they are used in. One of the cost-effective LCD panels is CH104SV01A that boasts of two significant features:

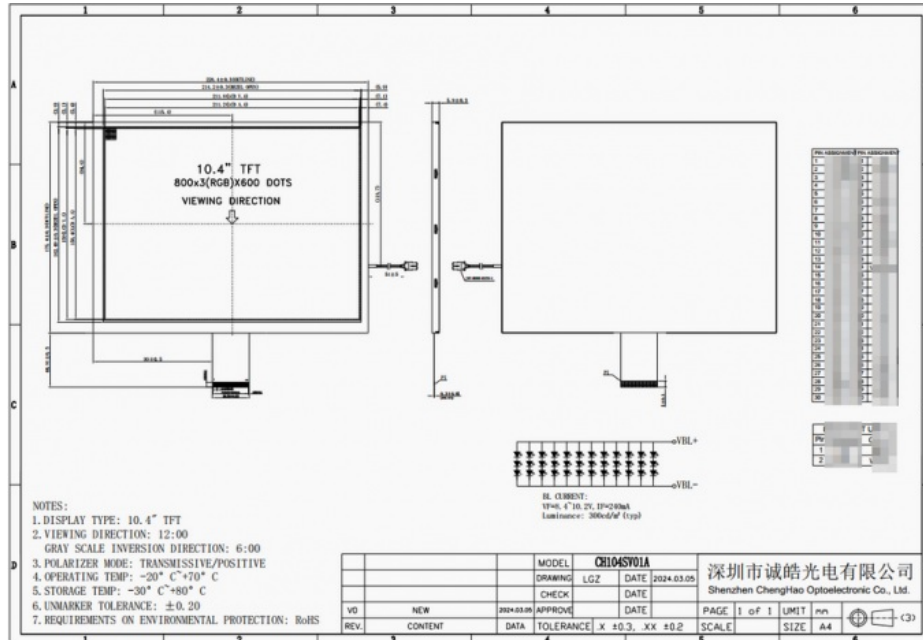
Your LCD's service life is largely dependent on the backlight LED brightness indicator. Over time, the brightness gradually decreases. Most LCDs have a backlight service life of 20000~3000H. However, CH104SV01A has a backlight service life of up to 50000H, thus significantly extending the LCD monitor's lifespan.

In order to improve the environmental adaptability of the display module, our engineers adopted a wide-temperature resistant design for CH104SV01A, which allows it to run smoothly in an environment of -20~+70°C and easily cope with various harsh environments.

Super long service life

Resistant to wide temperature environment

Therefore, CH104SV01A is an excellent choice for industrial use due to its reliable and long-lasting performance in various environments.



Technical Parameters:

10.4 Inch TFT Lcd Display Panel

The display type of this panel is 10.4" TFT Lcd with a resolution of 800*600 dots. The display mode is TN/Transmissive/Normally Black, and the color is 16M. The display interface is RGB.

The brightness of the panel is 300cd/m2 with a contrast of 500. The outline size of the panel is 228.4*175.4*5.9 mm with a viewing area of 211.8*159 mm and an active area of 211.2*158.4 mm.

The panel can operate in temperatures ranging from -20~+70 °C and can be stored in temperatures ranging from -30~+80 °C.

Module No	CH104SV01A
Module Type	10.4" TFT

Display Mode	Transmissive/TN/Normally White
Resolution	800x600 Pixels
Lumiance	300 cd/m2
Interface	RGB
Storage Temperature	-30~+70°C
Operating Temperature	-20~+80°C

Applications:

The CH104SV01A is a conventional LCD display that can be used in a wide variety of fields, such as automotive transportation, medical equipment, industrial control, artificial intelligence, Internet of Things equipment, home appliances, and more. This versatility makes it an ideal choice for many different applications.

In the automotive industry, this display can be used for automobile central control systems, providing drivers with important information about the vehicle's performance and status. In medical equipment, it can be used for B-ultrasound machines, allowing doctors to see detailed images of a patient's internal organs.

In industrial control settings, the CH104SV01A can be used in operating consoles, providing workers with real-time information about manufacturing processes and other critical systems. It can even be used in AI robots to display information and interact with users.

Whether it's in a smart refrigerator or an elevator system, the CH104SV01A can provide important visual feedback and control functionality. Its versatility and reliability make it an excellent choice for a wide variety of applications.



FAQ:

Q: What is the brand name of this TFT LCD Display?

A: The brand name of this TFT LCD Display is chenghao optoelectronic.

Q: What is the model number of this TFT LCD Display?

A: The model number of this TFT LCD Display is CH104SV01A.

Q: Where is this TFT LCD Display manufactured?

A: This TFT LCD Display is manufactured in China.

Q: What certifications does this TFT LCD Display have?

A: This TFT LCD Display has CE, ISO9001, Rose, SGS certifications.

Q: What is the minimum order quantity for this TFT LCD Display?

A: The minimum order quantity for this TFT LCD Display is 1 piece.

Q: How is this TFT LCD Display packaged?

A: All the products are packed in right way to keep it safe. For small sizes of products we use tray + carton, For bigger sizes we use foam slot + carton. We also design packages according to customers' requirements.

Q: What is the delivery time for this TFT LCD Display?

A: The delivery time for this TFT LCD Display is 3~7 days.

Q: What are the payment terms for this TFT LCD Display?

A: The payment terms for this TFT LCD Display are T/T, AliPay, and PayPal.

Q: What is the supply ability for this TFT LCD Display?

A: The supply ability for this TFT LCD Display is 50000000 pieces per month.



Shenzhen ChengHao Optoelectronic Co., Ltd.



+86 755-27806536



add@chenghaolcm.com



chenghaolcd.com

7th floor, building C5, Hengfeng Industrial City, Hangcheng street, Bao'an District, Shenzhen