



Capacitive Touch 4.3 Inch LCD Display Module With MIPI Interface For Access Control

Our Product Introduction

for more products please visit us on chenghaolcd.com

Basic Information

- Place of Origin: China Shenzhen
- Brand Name: Chenghao Optoelectronic
- Certification: RoHS CE FCC
- Model Number: CH430WV22B-CT
- Minimum Order Quantity: 100 pcs
- Packaging Details: All the products are packed in right way to keep it safe. For small sizes of products we use tray + carton, For bigger sizes we use foam slot + carton. we also design packages according to customers' requirements
- Delivery Time: 3~7 Days
- Payment Terms: TT
- Supply Ability: 300K pcs/month



Product Specification

- Product Name: 4.3 Inch Touch Lcd Display Module For Access Control Equipment
- Luminance: 350 Cd/m²
- Driver IC: ST7701S
- Touch Type: Capacitive
- FPC Pin Numbers: 20 Pins
- Lcm Interface: MIPI
- Resolution: 480*800 Pixels
- Touch Panel Interface: I2C
- Highlight: MIPI Interface LCD Display Module, Capacitive Touch LCD Display Module, 4.3 Inch LCD Display Module



More Images





Product Description

Product Description:



The ChengHao Display model CH430WV22B-CT is a color active matrix thin film transistor (TFT) liquid crystal display (LCD) that utilizes amorphous silicon TFT as a switching device. It is composed of a TFT LCD panel, a touch panel, a driving IC, a back-light, and an FPC.

This TFT Display measures 4.3 inches in the vertical screen and has a diagonally measured active display area with a resolution of 480*800*3-RGB. It uses ST7701 or compatible driver, which can display 16M colors by R.G.B. signal input. The driver is mounted on the glass and the interconnection via FPC, which includes components to drive the display module.

The touch panel is capacitive, uses GT911 as the driver IC, and interconnects with external devices through the I2C interface. It supports multi-touch and is essential in human-computer interaction.

Moreover, FPC can be customized according to customer requirements, such as modifying the back-light and FPC structure, interface definition, etc. CH430WV22B-CT is RoHS Compliance & Halogen Free.

Features:

Facial recognition access control equipment is utilized both indoors and outdoors, necessitating the installation of equipment that has impressive outdoor readability. Chenghao Optoelectronic has developed an LCD touch screen for access control systems with numerous technical features:

High Resolution: The CH430WV22B-CT is designed with a resolution of 480 x 800 and a backlight brightness of 350 cd/m2, allowing for clear display both indoors and in low-light outdoor conditions.

Support for Free Perspective: This touch LCD Module employs IPS display technology to achieve 80/80/80/80 Free Viewing Direction, enabling users to obtain a clear viewing angle effect when reading the screen from different angles, greatly enhancing the user experience.

Screen Anti-glare: The display module employs screen anti-glare technology. The screen can absorb a large amount of external powerful light projected onto it when a user reads the screen outside or in a strong light environment. This design can effectively safeguard the user's eyes.

Support Human-Computer Interaction: The module's surface is equipped with a capacitive touch panel. When the user touches the screen with their hand, the device can achieve information interaction.

Resolution	480x800 Pixels
Display Mode	IPS/Normally Black
Brightness	350 cd/m2(Optional)
Lcd Interface	MIPI
Touch Type	CTP

Technical Parameters:

Module Specifications

Module Name: 4.3 Inch Touch Lcd Display Module For Access Control Equipment

Module No: CH430WV22B-CT

Module Type: 4.3" TFT + CTP

Display Type: IPS/Transmissive/Normally Black

Resolution: 480*800 Dots

Luminance: 350cd/m2

Viewing Direction: 80/80/80/80

Module Interface: MIPI

Touch Panel Type: Capacitive

Touch Panel Interface: I2C
Operating Temperature: -20~+70°C
Storage Temperature: -30~+80°C
FPC Pin Number: 20Pins
Module Outline Size: 68*120*3.35 mm
Viewing Area: 56.7*93.9 mm
Active Area: 56.16*93.6 mm
CTP Glass LENS: 0.7 mm

Applications:

Chenghao Optoelectronic has developed the CH430WV22B-CT, a specialized LCD screen module that is intended for use in face recognition access control systems. Its advanced capabilities have garnered positive feedback from customers, attesting to its superior performance quality.

As a leading LCD manufacturer, Chenghao Optoelectronic empowers clients to customize and modify the display module to fit their specific requirements. The versatility of the CH430WV22B-CT makes it appropriate for various sectors, including industrial control, medical equipment, home appliances, artificial intelligence, and automobile transportation.



Support and Services:

Our Small LCD Touch Screen product comes with comprehensive technical support and services to ensure that you have a smooth and seamless experience with our product. Our technical support team is available to assist you with any queries or issues that you may have, and we offer a range of services to ensure that your product is up and running at all times.

Our services include:

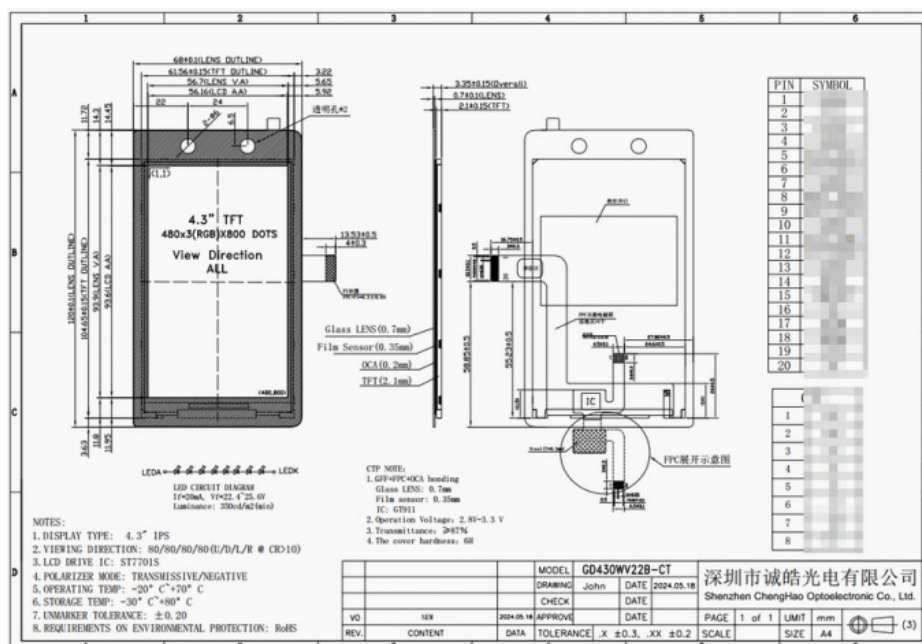
Installation and setup

Product testing and calibration

Maintenance and repairs

Software upgrades and updates

We also offer a range of warranty options to give you peace of mind and protect your investment. Contact us today to learn more about our technical support and services for the Small LCD Touch Screen product.



FAQ:

Q: What is the brand name of this LCD Touch Screen?
A: The brand name of this product is Chenghao Optoelectronic.
Q: What is the model number of this LCD Touch Screen?
A: The model number of this product is CH430WV22B-CT.
Q: Where is this LCD Touch Screen made?
A: This product is made in Shenzhen, China.
Q: What certifications does this LCD Touch Screen have?
A: This product has RoHS, CE, and FCC certifications.
Q: What is the minimum order quantity for this LCD Touch Screen?
A: There is no minimum order quantity for this product.
Q: How is this LCD Touch Screen packaged?
A: All products are packed safely with tray + carton for small sizes and foam slot + carton for bigger sizes. We also design packages according to customers' requirements.
Q: What is the delivery time for this LCD Touch Screen?
A: The delivery time is typically 3-7 days.
Q: What are the payment terms for this LCD Touch Screen?
A: The payment terms are TT.
Q: What is the supply ability for this LCD Touch Screen?
A: The supply ability is 300K pcs/month.



Shenzhen ChengHao Optoelectronic Co., Ltd.



+86 755-27806536



add@chenghaolcm.com



chenghaolcd.com

7th floor, building C5, Hengfeng Industrial City, Hangcheng street, Bao'an District, Shenzhen