



## Capacitive Touch LCD Module 4.3 Inch 480\*800 MIPI Display With 20pin FPC

### Our Product Introduction

for more products please visit us on [chenghaolcd.com](http://chenghaolcd.com)

#### Basic Information

- Place of Origin: China Shenzhen
- Brand Name: Chenghao Optoelectronic
- Certification: RoHS CE FCC
- Model Number: CH430WV22B-CT
- Minimum Order Quantity: 100 pcs
- Packaging Details: All the products are packed in right way to keep it safe. For small sizes of products we use tray + carton, For bigger sizes we use foam slot + carton. we also design packages according to customers' requirements
- Delivery Time: 3~7 Days
- Payment Terms: TT
- Supply Ability: 300K pcs/month



#### Product Specification

- Product Name: MIPI Display
- Display Mode: IPS/Normally Black/Transmissive
- Touch Type: Capacitive
- Contrast Ratio: 800
- Lcm Interface: MIPI
- Color: 16M
- Size: 4.3 Inch
- Storage Temperature: -30°C~80°C
- Touch Panel Interface: I2C
- Highlight: 20pin FPC Capacitive Touch Lcd Module, 480\*800 Capacitive Touch Lcd Module, 4.3 Inch Capacitive Touch Lcd Module

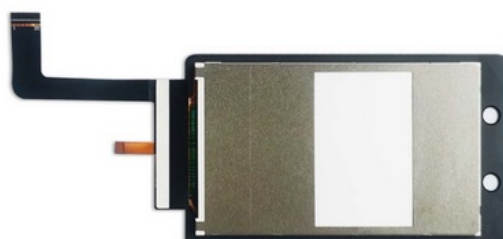


#### More Images



### Product Description:

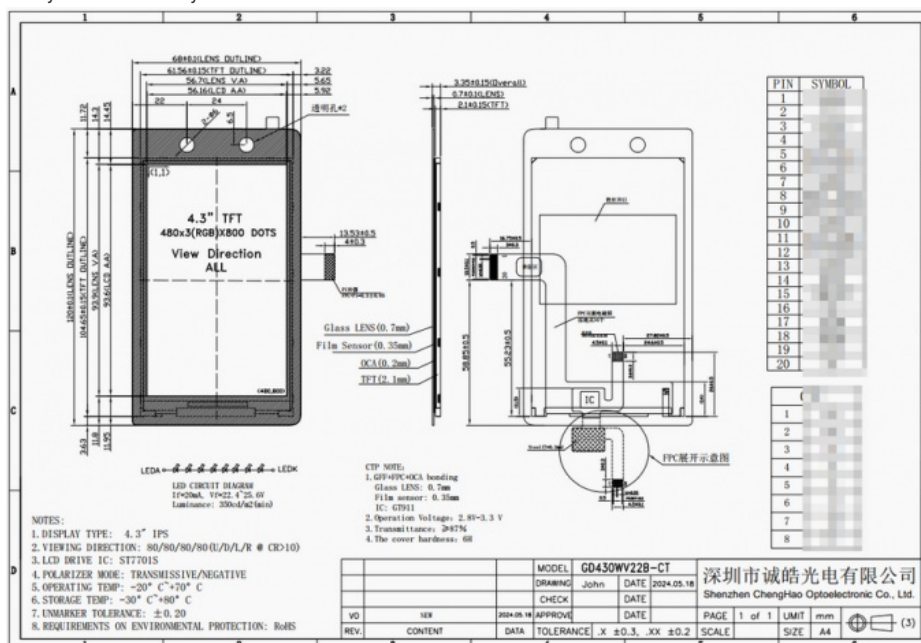
The ChengHao Display model CH430WV22B-GT is a color active matrix thin film transistor (TFT) liquid crystal display (LCD) that uses amorphous silicon TFT as a switching device. This model is composed of a TFT LCD panel, a touch panel, a driving IC, a backlight and EPC.



This touch panel is capacitive, uses GT911 as the driver IC, communicates and interconnects with external devices through the I2C interface, supports multi-touch, and is an important medium for human-computer interaction.

*RoHS Compliance & Halogen Free.*

Facial recognition access control equipment is commonly used both indoors and outdoors, which calls for the equipment to have exceptional outdoor readability. To cater to this demand, Chenghao Optoelectronic has developed an LCD touch screen that is specifically designed for access control systems. This LCD touch screen is equipped with a host of technical features that provide much-needed clarity and functionality.



Display Mode	IPS/Transmissive
Luminance	350cd/m2 (optional)
Interface	MIPI
TP Type	CTP

Contrast	800
Color	16M

Firstly, the CH430WV22B-CT LCD touch screen boasts a high resolution of 480\*800. Additionally, it has a backlight brightness of 350 cd/m2, which enables clear display in indoor and low-light outdoor environments. Furthermore, the touch LCD Module uses IPS display technology, which ensures free perspective. This technology enables 80/80/80/80 Free Viewing Direction, which means that users can obtain a clear viewing angle effect when reading the screen from different angles, greatly enhancing the user's viewing experience.

In addition, the display module uses screen anti-glare technology, and when the user is reading the screen outdoors or in a strong light environment, the screen can absorb much of the external strong light projected onto the screen. This design not only ensures clear visibility but also protects the user's eyes.

Last but not least, the Chenghao Optoelectronic LCD touch screen also supports human-computer interaction. A capacitive touch panel is installed on the surface of the module, enabling users to achieve information interaction with the device by simply touching the screen with their hands.

### Technical Parameters:

#### Module Specifications

The following are the specifications of the CH430WV22B-CT 4.3 Inch Touch Lcd Display Module designed for access control equipment:  
Module Name

*4.3 Inch Touch Lcd Display Module For Access Control Equipment*

Module No

*CH430WV22B-CT*

Module Type

*4.3" TFT + CTP*

Display Type

*The display type is IPS/Transmissive/Normally Black.*

Resolution

*The display has a resolution of 480\*800 dots.*

Luminance

*The display has a luminance of 350cd/m2.*

Viewing Direction

*The viewing direction is 80/80/80/80.*

Module Interface

The module interface is *MIPI*.

Touch Panel Type

The touch panel type is *capacitive*.

Touch Panel Interface

The touch panel interface is *I2C*.

Operating Temperature

The operating temperature range is *-20~+70°C*.

Storage Temperature

The storage temperature range is *-30~+80°C*.

FPC Pin Number

The module has *20 pins* for FPC.

Module Outline Size

The module outline size is *68\*120\*3.35 mm*.

Viewing Area

The viewing area is *56.7\*93.9 mm*.

Active Area

The active area is *56.16\*93.6 mm*.

CTP Glass LENS Thickness

The CTP Glass LENS thickness is *0.7 mm*.

### Applications:

Chenghao Optoelectronic has developed the CH430WV22B-CT LCD screen module for face recognition access control systems. As a customized product, it has been warmly welcomed by customers for its outstanding performance.

As a professional manufacturer of LCD screens, Chenghao Optoelectronic can customize and modify the CH430WV22B-CT display module according to customer requirements. This ensures that it can be used in a wide range of industries such as industrial control, medical equipment, home appliances, artificial intelligence, and automobile transportation.



## Support and Services:

Our small LCD touch screen products come with comprehensive technical support and service to ensure you have a seamless experience with our products. Our technical support team will help you quickly understand the features and functionality of your product and assist you with any questions or issues you may have during product installation, setup, or operation.

Our team of technicians have the knowledge and expertise to diagnose and resolve any issues with our products, minimizing downtime and ensuring maximum uptime.

Every step of the way, we're committed to providing you with the support and service you need to get the most out of your small LCD touch screen.

## FAQ:

**Q:** What is the brand name of this product?

**A:** The brand name of this product is Chenghao Optoelectronic.

**Q:** What is the model number of this product?

**A:** The model number of this product is CH430WV22B-CT.

**Q:** Where is this product manufactured?

**A:** This product is manufactured in China Shenzhen.

**Q:** What certifications does this product have?

**A:** This product has RoHS, CE, and FCC certifications.

**Q:** What are the payment terms for this product?

**A:** The payment terms for this product are TT.



**Shenzhen ChengHao Optoelectronic Co., Ltd.**



+86 755-27806536



add@chenghaolcm.com



chenghaolcd.com

7th floor, building C5, Hengfeng Industrial City, Hangcheng street, Bao'an District, Shenzhen