



4.3 Inch Capacitive Touch LCD Display Module With MIPI Interface For Access Control Equipment

Our Product Introduction

for more products please visit us on chenghaolcd.com

Basic Information

- Place of Origin: China Shenzhen
- Brand Name: Chenghao Optoelectronic
- Certification: RoHS CE FCC
- Model Number: CH430WV22B-CT
- Minimum Order Quantity: 100 pcs
- Packaging Details: All the products are packed in right way to keep it safe. For small sizes of products we use tray + carton, For bigger sizes we use foam slot + carton. we also design packages according to customers' requirements
- Delivery Time: 3~7 Days
- Payment Terms: TT
- Supply Ability: 300K pcs/month



Product Specification

- Product Name: 4.3 Inch Touch Lcd Display Module For Access Control Equipment
- FPC Pin Numbers: 20 Pins
- Luminance: 350 Cd/m2
- Touch Panel Interface: I2C
- Lcm Interface: MIPI
- Contrast Ratio: 800
- Size: 4.3 Inch
- Touch Type: Capacitive
- Highlight: Access Control Equipment LCD Display Module, 4.3 Inch LCD Display Module, MIPI Interface LCD Display Module



More Images



Product Description

Product Description:

ChengHao Display model CH430WV22B-CT is a color active matrix thin film transistor (TFT) liquid crystal display (LCD) that utilizes amorphous silicon TFT technology as a switching device. This model consists of a TFT LCD panel, a touch panel, a driving IC, a back-light and FPC.

This TFT Display has a 4.3 inch (vertical screen) diagonally measured active display area with a resolution of 480*800*3-RGB. The driver used for this project is the ST7701 or compatible and has the capacity to display 16M colors through RGB signal input. The driver is mounted on the glass and interconnected via FPC which includes components to drive the display module.

The touch panel on this display is capacitive, utilizes GT911 as the driver IC, communicates and interconnects with external devices through the I2C interface, supports multi-touch, and serves as an important medium for human-computer interaction. Additionally, the FPC can be customized in accordance with customer requirements, such as modifying the back-light and FPC structure, interface definition and so on.

This display model is RoHS compliant and halogen-free.

Module Name	4.3 Inch Touch Lcd Display Module
Resolution	480x800 Pixels
Luminance	350cd/m2(optional)
TP	Capacitive Touch Panel
Viewing Direction	80/80/80/80



Features:

Facial Recognition Access Control Equipment with Excellent Outdoor Readability

Facial recognition access control equipment is widely used both indoors and outdoors, which demands high-quality equipment with excellent outdoor readability. Chenghao Optoelectronic has developed an LCD touch screen for access control systems with advanced technical features.

Technical Features of LCD Touch Screen for Access Control Systems

Here are some of the technical features of the CH430WV22B-CT LCD Touch Screen:

High Resolution

The CH430WV22B-CT LCD Touch Screen features a high resolution of 480*800 and 350 cd/m2 backlight brightness, providing clear display in both indoor and low-light outdoor environments.

Support Free Viewing Angle

The touch LCD Module uses IPS display technology to achieve 80/80/80/80 Free Viewing Direction, allowing users to get a clear enough viewing angle effect when reading the screen from different angles. This greatly enhances user experience and convenience.

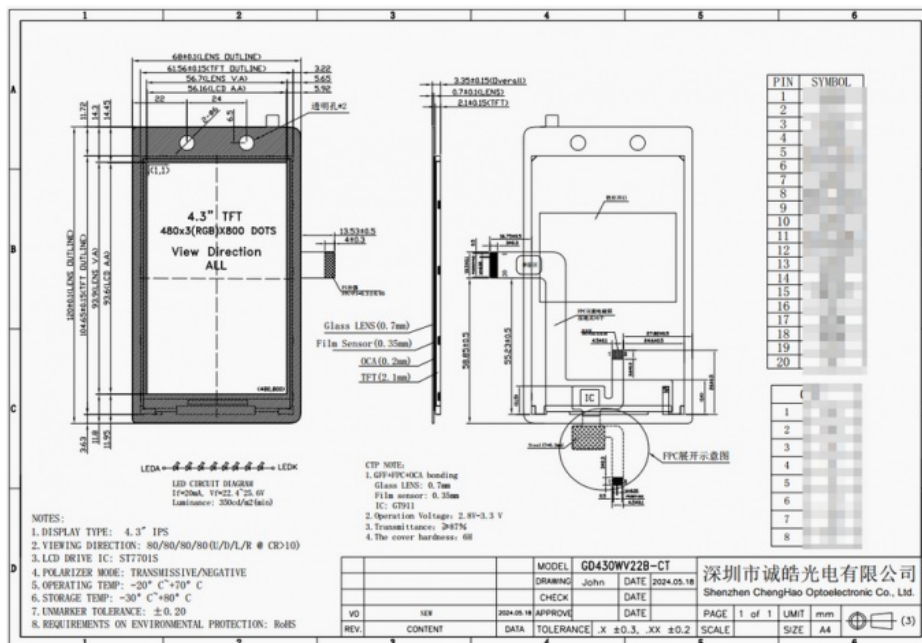
Screen Anti-Glare

The display module utilizes screen anti-glare technology, which can absorb a lot of external strong light projected onto the screen, ensuring that users can read the screen outdoors or in a strong light environment while protecting their eyes.

Support Human-Computer Interaction

The CH430WV22B-CT LCD Touch Screen is equipped with a capacitive touch panel. Through hand touch, users can achieve information interaction with the device, providing a user-friendly and intuitive experience.





Technical Parameters:

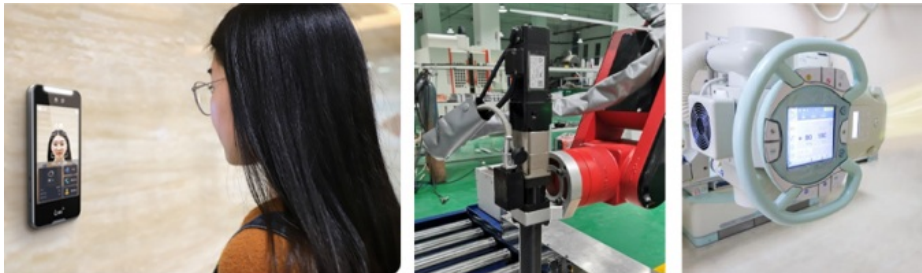
Module Name: 4.3 Inch Touch LCD Display Module For Access Control Equipment

This module is designed specifically for access control equipment and features a 4.3 inch TFT display with CTP touch technology. The module number is CH430WV22B-CT, and it boasts an IPS/transmissive/normally black display type with a resolution of 480x800 dots. The luminance of the display is 350cd/m2, and the viewing direction is 80/80/80/80 degrees. The module interface uses MIPI technology, while the touch panel is capacitive and uses I2C interface.

The operating temperature range for this module is -20~+70°C, and the storage temperature range is -30~+80°C. The FPC pin number for the module is 20 pins, and the module outline size is 68x120x3.35 mm. The viewing area is 56.7x93.9 mm, and the active area is 56.16x93.6 mm. The CTP glass lens measures 0.7 mm.

Applications:

The CH430WV22B-CT is a specialized LCD screen module that has been specifically created for being fitted in face recognition access control systems. This module's impressive performance has been widely lauded by satisfied customers. As a proficient LCD manufacturer, Chenghao Optoelectronic has the ability to make changes and adjustments to this display module in order to meet individual customer requirements. This means that it can be used to great effect in a range of different areas such as, but not restricted to, industrial control, medical equipment, home appliances, artificial intelligence, and automobile transportation.



Support and Services:

Our Small LCD Touch Screen product technical support and services include:

[Assistance with product installation and setup](#)

[Troubleshooting technical issues](#)

[Software and firmware updates](#)

[Repair and replacement services](#)

[Technical documentation and manuals](#)

FAQ:

A: The brand name of this LCD touch screen is Chenghao Optoelectronic.

Q: What is the model number of this LCD touch screen?

A: The model number of this LCD touch screen is CH430WV22B-CT.

Q: Where is this LCD touch screen manufactured?

A: This LCD touch screen is manufactured in China Shenzhen.

Q: What certifications does this LCD touch screen have?

A: This LCD touch screen has RoHS, CE, and FCC certifications.

Q: What are the packaging details for this LCD touch screen?

A: All the products are packed in the right way to keep it safe. For small sizes of products, we use tray + carton, and for bigger sizes, we use foam slot + carton. We also design packages according to customers' requirements.

Q: What is the minimum order quantity for this LCD touch screen?

A: There is no minimum order quantity for this LCD touch screen.
Q: What is the delivery time for this LCD touch screen?
A: The delivery time for this LCD touch screen is 3~7 days.
Q: What are the payment terms for this LCD touch screen?
A: The payment terms for this LCD touch screen are TT.
Q: What is the supply ability for this LCD touch screen?
A: The supply ability for this LCD touch screen is 300K pcs/month.



Shenzhen ChengHao Optoelectronic Co., Ltd.



+86 755-27806536



add@chenghaolcm.com



chenghaolcd.com

7th floor, building C5, Hengfeng Industrial City, Hangcheng street, Bao'an District, Shenzhen