



4 Pin OLED Display Module IIC Interface with 2.42inch 12864 HD Monochrome Display Screen

Our Product Introduction

for more products please visit us on chenghaolcd.com

Basic Information

- Place of Origin: China Shenzhen
- Brand Name: Chenghao Optoelectronic
- Certification: CE RoHS FCC
- Model Number: CH240L004A-PW
- Minimum Order Quantity: 100 pcs
- Packaging Details: All the products are packed in right way to keep it safe. For small sizes of products we use tray + carton, For bigger sizes we use foam slot + carton. we also design packages according to customers' requirements
- Delivery Time: 3~5 working days
- Payment Terms: TT or Others
- Supply Ability: 300K pcs/month



Product Specification

- Product Name: 4 Pin Oled Display Module
- Number Of Pins: 4 Pins
- Operating Voltage: 3.3V VDD
- Outline Size: 70*48*6 Mm
- ROHS STANDARD: Yes
- Diagonal Size: 2.42 Inch
- Active Area: 55.01 X 27.49 Mm
- Display Mode: OLED White
- Frame Rate: 100Hz
- Highlight: HD Monochrome OLED Display Module, IIC Interface OLED Display Module, 2.42inch OLED Display Module



More Images





Product Description

Product Description:

The Active Area of the OLED Display Module measures at 55.01 X 27.49 mm, ensuring that all displayed information can be easily viewed and read. The OLED Interface of the module is I2C, providing fast and efficient communication between devices.

The SSD1306 Monochrome OLED used in the OLED Display Module is known for its high-quality display, making it a popular choice for various applications. This small OLED display is compact and easy to use, making it an excellent choice for embedded systems and handheld devices.

The OLED Display Module offers a display size of 2.42 inches, making it perfect for applications where space is limited. Whether you're designing a small handheld device or a compact embedded system, the OLED Display Module is an excellent choice for displaying clear and detailed information.

Features:

Product Name: OLED Display Module

Diagonal Size: 2.42 Inch

Display Mode: OLED (White)

Frame rate: 100Hz

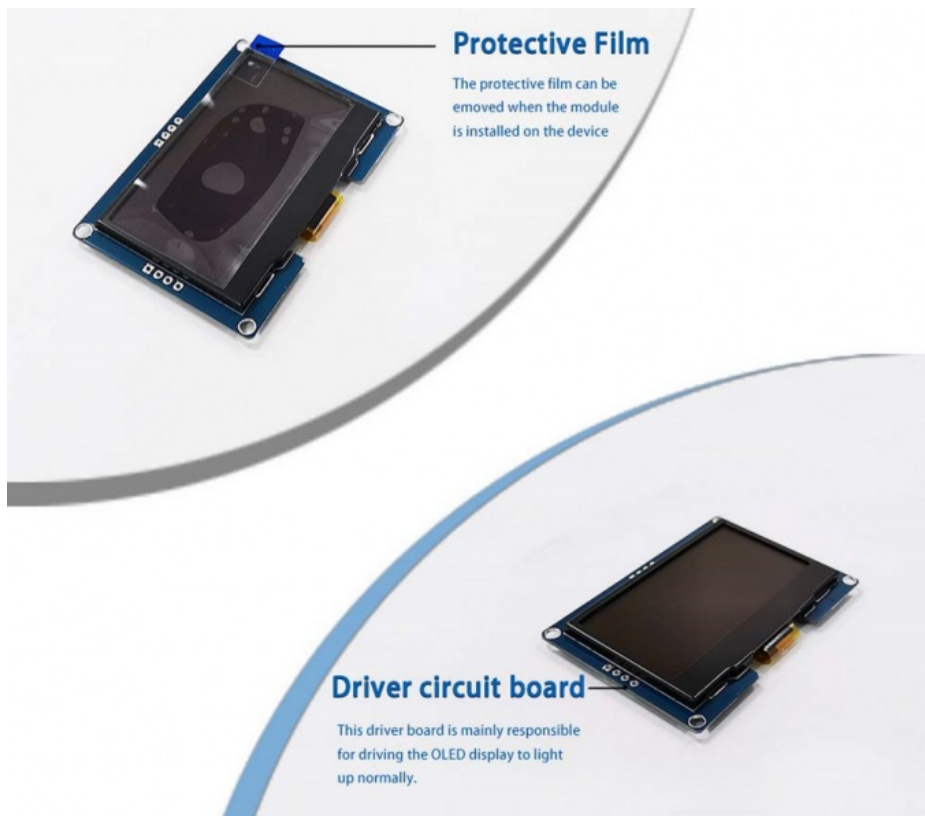
Driving Ic: SSD1309 OLED

Number Of Pixels: 128x64

4-pin OLED display

SSD1309 OLED driving IC

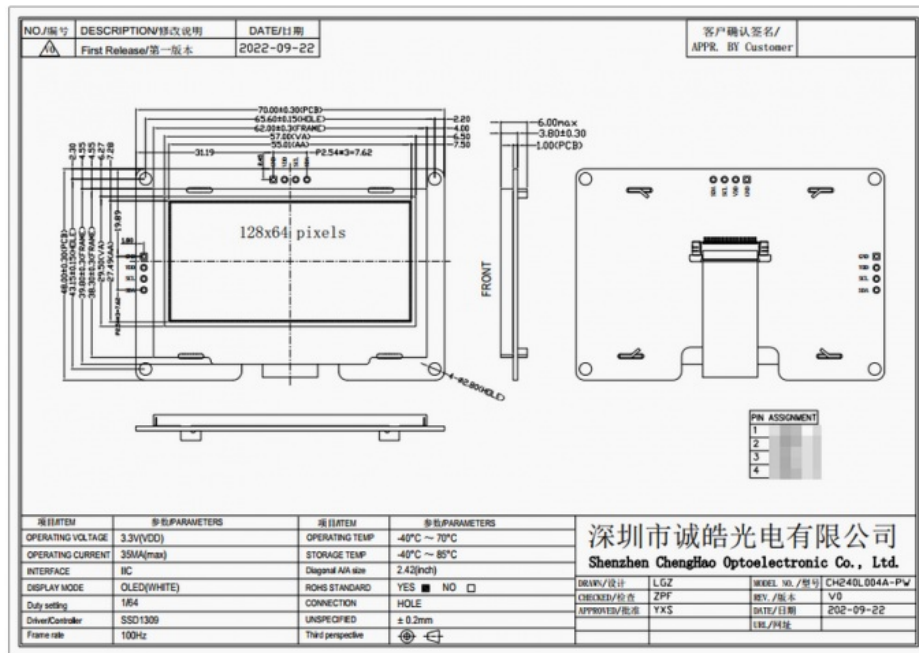
OLED display panel manufacturer



Technical Parameters:

Technical Parameter	Value
---------------------	-------

Operating Voltage	3.3V (VDD)
Storage Temp	-40~ +85 °C
Number Of Pixels	128x64
Diagonal Size	2.42 Inch
ROHS STANDARD	Yes
OPERATING CURRENT	35MA(max)
Frame rate	100Hz
Outline Size	70*48*6 Mm
Number of pins	4 Pins
Oled Interface	I2C



Applications:

One of the main advantages of the CH240L004A-PW OLED display module is its small size. This makes it ideal for use in small devices such as wearable technology, smart home devices, and medical devices. The module's high-quality OLED display ensures that images and text are clear and easy to read even in bright light.

The OLED display module is also ideal for industrial applications. Its rugged design and operating temperature range of -40~70°C make it suitable for use in harsh environments.

The OLED display module is certified to CE, RoHS and FCC standards, ensuring it meets the highest quality and safety standards. There is no minimum order quantity and customers can purchase as many modules as they need. The module is packaged safely, with small sizes using pallets + cartons, and large sizes using foam slots + cartons. Customized packaging is also available.

The OLED display module is produced in Shenzhen, China, complies with RoHS standards, has only 4 pins, and an overall size of 70*48*6 mm. It is a versatile and reliable product.

Support and Services:

OLED display module is a high-performance display solution with a wide range of applications. Our product technical support and services include:

- 1.Remote technical consultation and advice
- 2.Product customization and development services to meet specific customer needs
- 3.Repair and replacement services for defective or damaged products
- 4.Software and firmware updates to ensure optimal performance and compatibility
- 5.Quality assurance and testing services to ensure product reliability and performance

Our experienced team of engineers and technicians are dedicated to providing the highest level of customer support and service. If you have any questions or need help with OLED display modules, please contact us.

Packing and Shipping:

The OLED Display Module will be carefully packaged in a sturdy box with ample protection to ensure safe delivery.

We offer worldwide shipping for the OLED Display Module.

Shipping rates and delivery times may vary depending on the destination.

We will provide a tracking number so you can monitor the delivery status of your order.
Please ensure that the shipping address is correct and complete to avoid any delays or delivery issues.
We are not responsible for any customs or import duties that may be charged upon delivery.



FAQ:

- Q: What is the brand name of the OLED display module?
A: The brand name of the OLED display module is Chenghao Optoelectronic.
Q: What is the model number of the OLED display module?
A: The model number of the OLED display module is CH240L004A-PW.
Q: Where is the OLED display module manufactured?
A: The OLED display module is manufactured in China Shenzhen.
Q: What certifications does the OLED display module have?
A: The OLED display module has CE, RoHS, and FCC certifications.
Q: What is the minimum order quantity for the OLED display module?
A: There is no minimum order quantity for the OLED display module.
Q: What is the packaging method for the OLED display module?
A: All the products are packed in the right way to keep them safe. For small sizes of products, we use tray + carton, for bigger sizes we use foam slot + carton. We also design packages according to customers' requirements.
Q: What is the delivery time for the OLED display module?
A: The delivery time for the OLED display module is 3~5 working days.
Q: What are the payment terms for the OLED display module?
A: The payment terms for the OLED display module are TT or others.
Q: What is the supply ability of the OLED display module?
A: The supply ability of the OLED display module is 300K pcs/month.



Shenzhen ChengHao Optoelectronic Co., Ltd.



+86 755-27806536



add@chenghaolcm.com



chenghaolcd.com

7th floor, building C5, Hengfeng Industrial City, Hangcheng street, Bao'an District, Shenzhen