



## 2.42" OLED Display Module IC I2C SPI Serial With SSD1309 Controller

### Our Product Introduction

for more products please visit us on [chenghaolcd.com](http://chenghaolcd.com)

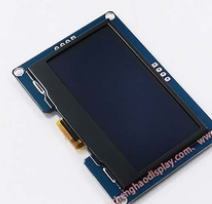
#### Basic Information

- Place of Origin: China Shenzhen
- Brand Name: Chenghao Optoelectronic
- Certification: CE RoHS FCC
- Model Number: CH240L004A-PW
- Minimum Order Quantity: 100 pcs
- Packaging Details: All the products are packed in right way to keep it safe. For small sizes of products we use tray + carton, For bigger sizes we use foam slot + carton. we also design packages according to customers' requirements
- Delivery Time: 3~5 working days
- Payment Terms: TT or Others
- Supply Ability: 300K pcs/month



#### Product Specification

- Product Name: 2.42" Oled Display Module
- Diagonal Size: 2.42 Inch
- Operating Temperature: -40~70 °C
- OPERATING CURRENT: 35MA(max)
- Operating Voltage: 3.3V VDD
- Display Mode: OLED White
- Outline Size: 70\*48\*6 Mm
- Number Of Pins: 4 Pins
- Storage Temp: -40~ +85 °C
- Highlight: 2.42" Oled Display Module IC, I2C SPI Serial OLED Display Module, SSD1309 Controller OLED Display Module



#### More Images





## Product Description

### Product Description:

CH240L004A-PW OLED display module features a 2.4-inch OLED graphic display including 4 pins. With its SSD1309 driver IC, it is able to deliver crisp graphics and images with ease. This makes it ideal for a variety of applications, including MP3 players, medical equipment, and more.

OLED display modules operate at 3.3V (VDD), making them very energy efficient and ideal for use in portable devices. It is also designed to work in a wide temperature range, with an operating temperature of -40~+85°C. This means it's suitable for use in a variety of environments, from deserts to the Arctic. Overall, our OLED display module is a high-quality, reliable and versatile display that is ideal for a variety of applications. Whether you are designing a new gaming console or medical device, this display module is sure to meet your needs and exceed your expectations.



### Features:

Product Name: OLED Display Module

Number of Pixels: 128x64

OLED Interface: I2C

Active Area: 55.01 X 27.49 Mm

Operating Temperature: -40~70 °C

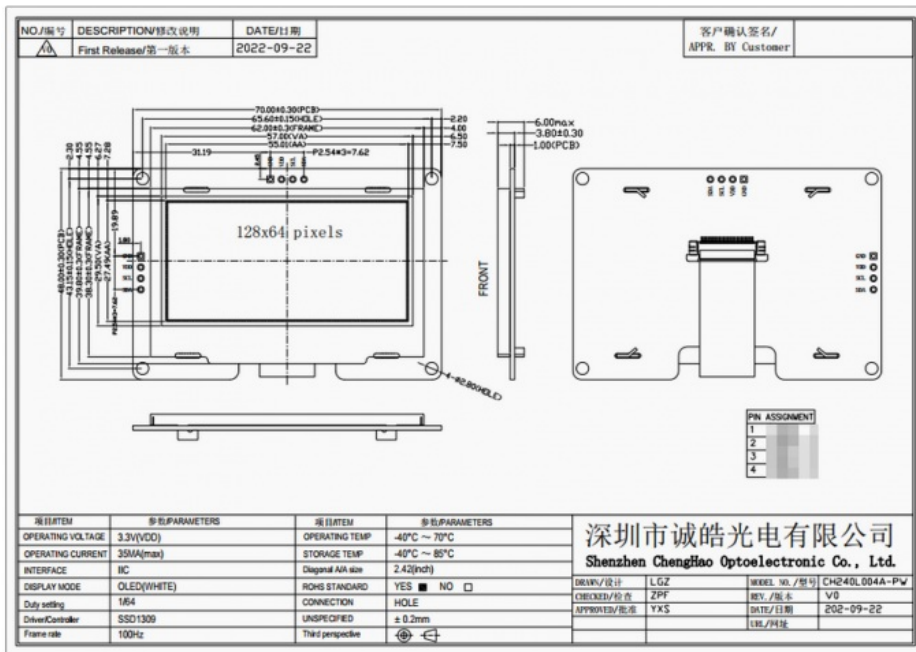
Display Mode: OLED (White)

This product is a small OLED module with an I2C interface.

### Technical Parameters:

Operating Voltage	3.3V (VDD)
Oled Interface	I2C
Outline Size	70*48*6 Mm
Diagonal Size	2.42 Inch
Number of pins	4 Pins
Number Of Pixels	128x64
Storage Temp	-40~ +85 °C
Active Area	55.01 X 27.49 Mm
Frame rate	100Hz
OPERATING CURRENT	35MA(max)

This table shows the technical parameters of a small OLED display module with an I2C interface. The OLED display screen has a diagonal size of 2.42 inches and a resolution of 128x64 pixels. The module has 4 pins and requires an operating voltage of 3.3V (VDD). The outline size of the module is 70\*48\*6 mm and the active area is 55.01 x 27.49 mm. The frame rate is 100Hz and the maximum operating current is 35mA. This module is suitable for use in various applications that require small OLED display screens.



### Applications:

The CH240L004A-PW OLED display module is perfect for a variety of application occasions and scenarios. One of the most common applications is in wearable technology such as smartwatches and fitness trackers. Its small size and low power consumption make it ideal for these devices. The display is also perfect for use in portable medical devices such as blood glucose monitors and pulse oximeters. Its high contrast and readability make it easy to read in any lighting condition.

Another popular application for the CH240L004A-PW OLED display module is in consumer electronics such as audio and video equipment. The display can be used to display track information and settings on audio equipment and to display information and settings on video equipment. The high contrast and readability make it easy to use and navigate.

The CH240L004A-PW OLED display module can also be used in industrial control systems. Its high contrast and readability make it easy to read and use in any lighting condition. The display can be used to display system status information and settings.

Overall, the CH240L004A-PW OLED display module is a versatile and high-quality product that is suitable for a wide range of applications. The product has no MOQ and has a supply ability of 300K pcs/month. The product is packed safely with tray + carton for small sizes of products and foam slot + carton for bigger sizes. The package can also be designed according to customers' requirements. The product is delivered within 3~5 working days and accepts TT or other payment terms.

### Support and Services:

Our OLED Display Module product comes with comprehensive technical support and services to ensure smooth integration and operation. Our team of experts is available to assist with product installation, troubleshooting, and optimization. We also provide regular software updates to enhance performance and add new features. Our services include:

- Technical support for product installation, configuration, and usage
- Product maintenance and repair services
- Software updates and patches
- Customization and integration services
- Training and documentation

Our goal is to provide our customers with the highest level of support throughout the product lifecycle and ensure that their OLED Display Module product delivers optimal performance and reliability.



## FAQ:

---

Q: What is the brand name of the OLED Display Module?

A: The brand name is Chenghao Optoelectronic.

Q: What is the model number of the OLED Display Module?

A: The model number is CH240L004A-PW.

Q: Where is the OLED Display Module manufactured?

A: The OLED Display Module is manufactured in China Shenzhen.

Q: What certifications does the OLED Display Module have?

A: The OLED Display Module has CE, RoHS, and FCC certifications.

Q: What is the minimum order quantity for the OLED Display Module?

A: There is no minimum order quantity for the OLED Display Module.

Q: What are the packaging details for the OLED Display Module?

A: All the products are packed in the right way to keep them safe. For small sizes of products, we use tray + carton. For bigger sizes, we use foam slot + carton. We also design packages according to customers' requirements.

Q: What is the delivery time for the OLED Display Module?

A: The delivery time is 3~5 working days.

Q: What are the payment terms for the OLED Display Module?

A: The payment terms are TT or others.

Q: What is the supply ability of the OLED Display Module?

A: The supply ability is 300K pcs/month.



**Shenzhen ChengHao Optoelectronic Co., Ltd.**



+86 755-27806536



add@chenghaolcm.com



chenghaolcd.com

7th floor, building C5, Hengfeng Industrial City, Hangcheng street, Bao'an District, Shenzhen