



2.42 Inch SPI OLED Display Module 128x64 Pixels With SSD1309 Driving IC

Our Product Introduction

for more products please visit us on chenghaolcd.com

Basic Information

- Place of Origin: China Shenzhen
- Brand Name: Chenghao Optoelectronic
- Certification: CE RoHS FCC
- Model Number: CH240L003A-PW
- Minimum Order Quantity: 100 pcs
- Packaging Details: All the products are packed in right way to keep it safe. For small sizes of products we use tray + carton, For bigger sizes we use foam slot + carton. we also design packages according to customers' requirements
- Delivery Time: 3~5 working days
- Payment Terms: TT or Others
- Supply Ability: 300K pcs/month



Product Specification

- Product Name: SPI Oled Display
- Storage Temp: -40~ +85 °C
- Display Mode: OLED White
- Pixels: 128x64
- Driving Ic: SSD1309
- Frame Rate: 100Hz
- Oled Interface: SPI
- ROHS STANDARD: Yes
- Outline Size: 71*43.5*6 Mm
- Display Color: White
- Highlight: SSD1309 OLED Display Module,
SPI OLED Display Module,
128x64 Pixels OLED Display Module



More Images



Product Description

Product Description:

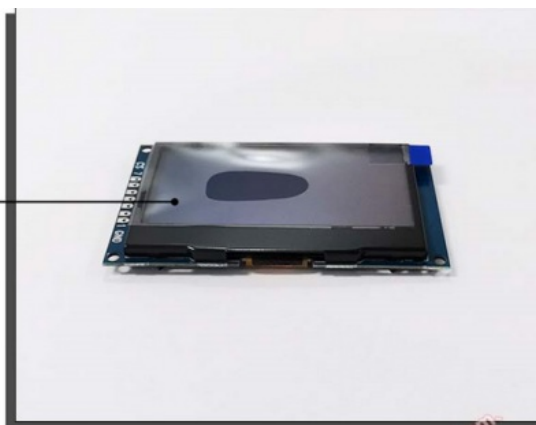
CH240L003A-PW is a 2.42-inch OLED display module with 128x64-dot resolution and white display mode. The module uses an SSD1309 driver and SPI interface, supports SPI/I2C communication, and comes with sample code for C51, Arduino, STM32 and ESP32. The CH240L003A-PW module has a wide range of application fields, including various industries such as industrial equipment, home appliances, industrial control and artificial intelligence. Its operating temperature range is -40°C to +70°C, and its storage temperature range is -40°C to +85°C. It complies with RoHS standards to ensure product reliability and stability.

In addition, the CH240L003A-PW module uses a 7-pin SPI interface, making it more convenient to communicate with other devices. The module also has a long service life of up to 20,000 hours, greatly improving the durability of the installed equipment.

In terms of product packaging, Chenghao Optoelectronics uses transport boxes with export hardness standards and adds foam pads inside to prevent screen damage. The weight of each box does not exceed 3.5 kg, and the dimensions may vary according to standards. To protect the goods, we use pallets or wooden frames. In addition, we can also carry out personalized packaging according to customer requirements.

Protective Film

The protective film can be removed when the display module is installed on the device.



Electric Circuit Board

Responsible for driving the OLED display to light up normally.



Features:

Product Name: OLED Display Module

Outline Size: 71*43.5*6 Mm

Active Area: 55.01 X 27.49 Mm

OLED Interface: SPI

Storage Temp: -40~ +85 °C

Frame rate: 100Hz

Features:

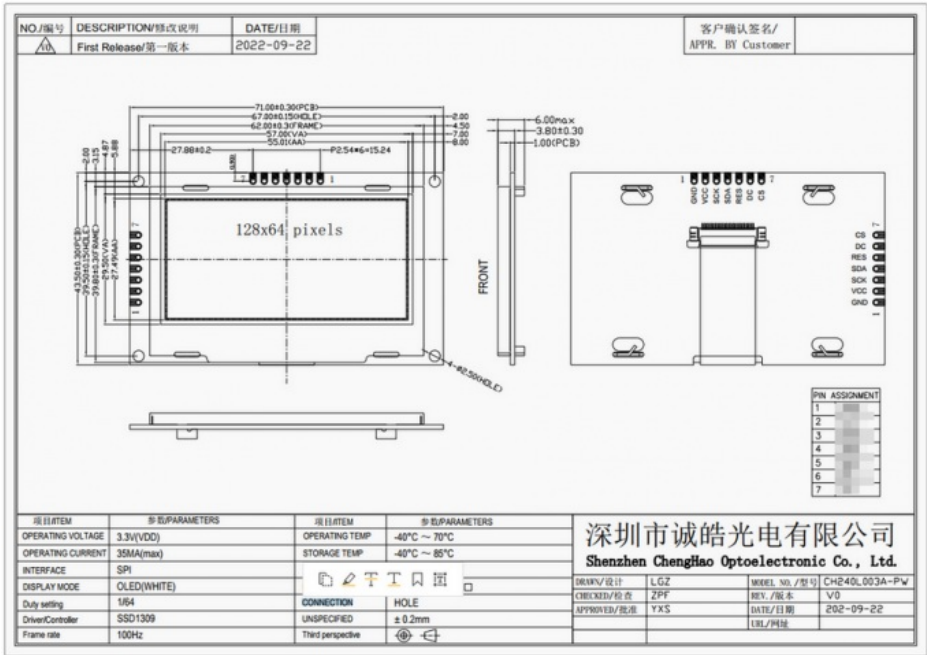
Small OLED Display

SSD1306 Monochrome OLED

SPI OLED Screen

Technical Parameters:

Driving IC	SSD1309
Module Size	71 X 43.5 X6 Mm
Active Area	55.01 X 27.49 Mm
Operating Voltage	3.3V (VDD)
Outline Size	71*43.5*6 Mm
Frame Rate	100Hz
Operating Temperature	-40~70C
OLED Interface	4-Wire SPI
Storage Temperature	-40~ +85 °C
Diagonal Size	2.42 Inch



Applications:

This monochrome OLED display is driven by the SSD1351 IC and has a diagonal size of 2.42 inches. It operates at an operating voltage of 3.3V (VDD) and has an active area of 55.01 x 27.49 mm.

The CH240L003A-PW OLED display module is perfect for a wide range of product application occasions and scenarios, such as:

Smart Wearables: The OLED display is perfect for smart wearables such as smartwatches, fitness trackers, and other wearable devices. The high-quality display provides clear and easy-to-read information for the user.

Industrial Equipment: The CH240L003A-PW OLED display module is ideal for use in industrial equipment such as control panels, measurement instruments, and other industrial applications. The display's high-quality resolution ensures that critical information is displayed accurately and clearly.

Medical Devices: The OLED display module is also suitable for medical devices such as monitors and diagnostic equipment. The high-quality display provides clear and accurate readings for medical professionals.

Automotive Applications: The CH240L003A-PW OLED display module is perfect for use in automotive applications such as dashboard displays, infotainment systems, and GPS navigation systems. The high-quality display provides clear and easy-to-read information for the driver.

Packing and Shipping:

Product Packaging:

The OLED display module will be packaged in a sturdy cardboard box to ensure safe transportation.

The box will be filled with bubble wrap or foam to prevent any damage during shipping.

The product will be labeled with all necessary information, including product name, quantity, and shipping address.

Shipping:

The OLED display module will be shipped via a reliable courier service.

The estimated delivery time will be provided to the customer at the time of purchase.

The customer will be provided with a tracking number to track the order status.

The shipping cost will be calculated based on the destination and weight of the package.

FAQ:

Q: What is the brand name of the OLED Display Module?

A: The brand name is Chenghao Optoelectronic.

Q: What is the model number of the OLED Display Module?

A: The model number is CH240L003A-PW.

Q: Where is the OLED Display Module manufactured?

A: The OLED Display Module is manufactured in China Shenzhen.

Q: What certifications does the OLED Display Module have?

A: The OLED Display Module has CE, RoHS, and FCC certifications.

Q: What is the minimum order quantity for the OLED Display Module?

A: There is no minimum order quantity for the OLED Display Module.

Q: How is the OLED Display Module packaged?

A: All the products are packed in the right way to keep them safe. For small sizes of products, we use tray + carton. For bigger sizes, we use foam slot + carton. We also design packages according to customers' requirements.

Q: What is the delivery time for the OLED Display Module?

A: The delivery time for the OLED Display Module is 3~5 working days.

Q: What are the payment terms for the OLED Display Module?

A: The payment terms for the OLED Display Module are TT or others.

Q: What is the supply ability of the OLED Display Module?

A: The supply ability of the OLED Display Module is 300K pcs/month.



Shenzhen ChengHao Optoelectronic Co., Ltd.



+86 755-27806536



add@chenghaolcm.com



chenghaolcd.com

7th floor, building C5, Hengfeng Industrial City, Hangcheng street, Bao'an District, Shenzhen