



Custom 12864 OLED Module 2.42 Inch With 4 Wire SPI / I2C Interface

Our Product Introduction

for more products please visit us on chenghaolcd.com

Basic Information

- Place of Origin: China Shenzhen
- Brand Name: Chenghao Optoelectronic
- Certification: CE RoHS FCC
- Model Number: CH240L003A-PW
- Minimum Order Quantity: 100 pcs
- Packaging Details: All the products are packed in right way to keep it safe. For small sizes of products we use tray + carton, For bigger sizes we use foam slot + carton. we also design packages according to customers' requirements
- Delivery Time: 3~5 working days
- Payment Terms: TT or Others
- Supply Ability: 300K pcs/month



Product Specification

- Product Name: 12864 Oled Module
- Interface Type: SPI
- Outline Size: 71*43.5*6 Mm
- Diagonal Size: 2.42 Inch
- Frame Rate: 100Hz
- Drive Ic: SSD1351
- Operating Voltage: 3.3V VDD
- Display Mode: OLED White
- Oled Interface: SPI
- Highlight: Custom 12864 OLED Module,
4 wire SPI OLED Module,
2.42 inch OLED Module



More Images





Product Description

Product Description:

The 2.42 Inch OLED module is a Monochrome graphic oled display module newly developed and customized by chenghao Optoelectronic for customers. This display module uses 3.3V (VDD) as the OPERATING VOLTAGE, has an embedded SSD1309 driver chip, and supports SPI/I2C communication.

This module currently has two models: CH240L003A-PW and CH240L004A-PW. The number of pins used by these two modules are 7 Pin and 4 Pin respectively, supporting SPI interface and IIC interface respectively.

The module has a dot matrix display area with a diagonal measurement of 2.42 inches, a display resolution of 128*64 dots, and a white pattern and black background.

The module supports a wide temperature environment, can operate normally in an environment of -40 ~ +70 °C, can be stored in an environment of -40 ~ +85 °C, and has a designed service life of more than 20,000H.

By the way, we can also provide demo code for C51, Arduino, STM32 and ESP32 if customers need it.



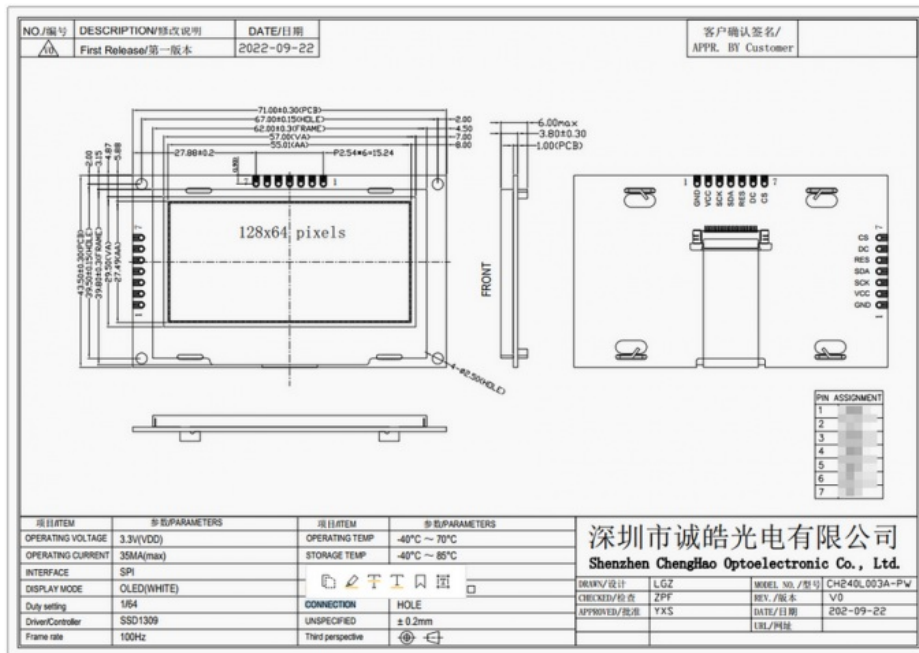
Features:

Product Name: OLED Display Module
Display Mode: OLED (White)
Driving Ic: SSD1309
Operating Voltage: 3.3V (VDD)
Operating Temperature: -40~70C
SPI OLED display
Small OLED screen
OLED 12864

Technical Parameters:

Oled Interface:	4-Wire SPI
Drive Ic:	SSD1309
Module Size:	71 X 43.5 X6 Mm
Number Of Pixels:	128x64

Active Area:	55.01 X 27.49 Mm
Driving Ic:	SSD1309
Diagonal Size:	2.42 Inch
Display Mode:	OLED (White)
Frame rate:	100Hz
ROHS STANDARD:	Yes



Packing and Shipping:

Product Packaging:

- 1 OLED Display Module
- 1 Protective Foam Layer
- 1 Anti-Static Bag
- 1 User Manual

Shipping:

- Ships within 1-2 business days
- Free standard shipping within the US
- International shipping available with additional fees
- Tracking number provided once shipped

Why Choose US?

High quality assurance: We are a factory-type supplier with ISO certification. All products undergo strict quality inspection and testing before shipment, and obtain CE/ROHS certification. This means you can buy our products with confidence and enjoy stable and reliable quality assurance.

Strong after-sales service: We have a professional after-sales service team to provide strong guarantee and logistics technical services for your orders. Whether it is product after-sales warranty or technical support, our technical team will provide remote online technical support at any time for any technical problems encountered during testing or use.

Customized services: We provide various forms of customized services, including module customization, packaging customization and transportation customization. Whether it is redesigning the FPC shape and structure according to project requirements, or defining module interface types according to customer requirements, we can meet your customized needs.

Reliable logistics services: We have established long-term cooperative relationships with a number of express logistics companies. With the advantage of export volume, we are able to obtain discounts and provide you with reliable logistics services to ensure that products are delivered safely and on time.

Environmental Sustainability: Chenghao Optoelectronics pays attention to environmental protection, considers environmental factors during the production process, and has passed ISO14001 certification to prove the effective implementation of our environmental management system. We are committed to reducing our impact on the environment, promoting sustainable development and contributing to a green future.

By cooperating with Chenghao Optoelectronics, you will receive high-quality products, strong after-sales service, customized solutions and reliable logistics support. We will take customer satisfaction as the most important goal and provide you with high-quality products and services. If you have any further questions or needs, please feel free to contact us, we look forward to working with you!

FAQ:

Q: What is the brand name of this OLED Display Module?

A: The brand name of this OLED Display Module is Chenghao Optoelectronic.

Q: What is the model number of this OLED Display Module?

A: The model number for this OLED Display Module is CH240L003A-PW.

Q: Where is this OLED Display Module manufactured?

A: This OLED Display Module is manufactured in China Shenzhen.

Q: Does this OLED Display Module have any certification?

A: Yes, this OLED Display Module has CE, RoHS, and FCC certification.

Q: What is the minimum order quantity for this OLED Display Module?

A: There is no MOQ for this OLED Display Module.

Q: What is the packaging method for this OLED Display Module?

A: All the products are packed in the right way to keep it safe. For small sizes of products, we use tray + carton. For bigger sizes, we use foam slot + carton. We also design packages according to customers' requirements.

Q: What is the delivery time for this OLED Display Module?

A: The delivery time for this OLED Display Module is 3~5 working days.

Q: What are the payment terms for this OLED Display Module?

A: The payment terms for this OLED Display Module are TT or others.

Q: What is the supply ability for this OLED Display Module?

A: The supply ability for this OLED Display Module is 300K pcs/month.



Shenzhen ChengHao Optoelectronic Co., Ltd.



+86 755-27806536



add@chenghaolcm.com



chenghaolcd.com

7th floor, building C5, Hengfeng Industrial City, Hangcheng street, Bao'an District, Shenzhen