



12.3" LCD Strip Display 1920*720 Wide Temp With 50 Pins LVDS Interface

Our Product Introduction

for more products please visit us on chenghaolcd.com

Basic Information

- Place of Origin: China
- Brand Name: chenghao optoelectronic
- Certification: CE, ISO9001, Rose, SGS
- Model Number: CH123FH01A
- Minimum Order Quantity: 100 pcs
- Packaging Details: All the products are packed in right way to keep it safe. For small sizes of products we use tray + carton, For bigger sizes we use foam slot + carton. we also design packages according to customers' requirements
- Delivery Time: 3~7 Days
- Payment Terms: T/T, AliPay, PayPal
- Supply Ability: 50000000 pcs/month



Product Specification

- Product Name: Lcd Strip Display
- Operating Temperature: -30 ~+85 °C
- Display Colors: 16M
- Display Area Size: 12.3"
- Response Time: 16 Ms
- Viewing Area: 292.832 (w) X 122.312 (H) Mm
- Outline Size: 229.032 (w) X 123.012 (H) X 5.9 (T) Mm
- Brightness: 1000 Cd/m2
- Connector Pin Number: 50 Pins
- Resolution: 1920*720
- Interface: LVDS
- Highlight: 1920*720 LCD Strip Display, Wide Temp LCD Strip Display,



More Images





Product Description

Product Description:

The CH123FH01A , featuring an Outline Size of 229.032 (w) X 123.012 (H) X 5.9 (T) mm, is a full color visualization solution designed for a multitude of applications ranging from automotive dashboards to industrial control systems. This 12.3" Lcd Strip Display is meticulously crafted to deliver high-quality visual performance while maintaining a sleek and compact form factor, making it an ideal choice for space-conscious installations.

At the heart of this product is a 12.3 Inch display area that offers ample space for clear and detailed imagery. This size is particularly well-suited for interactive interfaces, detailed monitoring screens, and other scenarios where clarity and visibility are paramount. The Thin Film Transistor Screen technology employed in this display ensures vibrant colors, sharp contrasts, and rapid response times, which translates into a dynamic and engaging user experience.

Connectivity is made straightforward and reliable with the inclusion of a 50 Pin connector. This connector ensures a firm and stable link between the display and the rest of the system, providing consistent performance and reducing the likelihood of connection-related issues. The ample pin count accommodates a wide range of signal inputs, empowering designers with greater flexibility when integrating the display into various electronic assemblies.

Features:

Product Name: 12.3" Lcd Strip Display
Display Area Size: 12.3 Inch
Viewing Direction: 85/85/85/85
Interface: LVDS
Display Mode: IPS / Transmissive / Normally Black
Resolution: 1920*720
Thin Film Transistor LCD Technology
High-Quality Thin Film Transistor Monitor
Durable Thin Film Transistor Screen

One of the standout features of this TFT LCD Display is its exceptional brightness, rated at 1000 Cd/m². This high brightness level ensures that the display remains visible even in environments with high ambient light, eliminating the common issue of screen glare that can obscure visibility. This feature is especially beneficial for outdoor applications or brightly lit indoor settings, where readability can often be compromised by external light sources.

The Thin Film Transistor LCD Display is engineered to withstand a broad range of operating temperatures, from as low as -30 °C to as high as +85 °C. This robust temperature resilience makes the display suitable for use in environments that experience extreme temperature fluctuations, ensuring that the display will maintain its integrity and performance over an extended period.

Technical Parameters:

Technical Parameter	Specification
Operating Temperature	-30 ~+85 °C
Display Colors	16M
Storage Temperature	-40 ~ +90 °C
Connector Pin Number	50 Pins
Brightness	1000 Cd/m ²
Display Mode	IPS / Transmissive / Normally Black
Viewing Area	292.832 (W) x 122.312 (H) mm
Display Area Size	12.3 Inch
Response Time	16 Ms

Our chenghao optoelectronic Thin Film Transistor Screen, model CH123FH01A, is a high-quality Liquid Crystal Display Monitor that offers exceptional brightness and a long lifetime. Originating from China with certifications like CE, RoHS, this TFT LCD Display is designed to meet the highest standards. With a supply ability of 50 million pcs/month, our Liquid Crystal Display Monitor ensures both performance and reliability for all your display needs.

Applications:

Whether it's for an advanced infotainment system, a sophisticated medical device, or a critical piece of industrial equipment, this TFT LCD Display is up to the task. Its combination of size, brightness, connectivity, and durability make it a versatile and reliable choice for any application where visual output is a key element of the user experience.



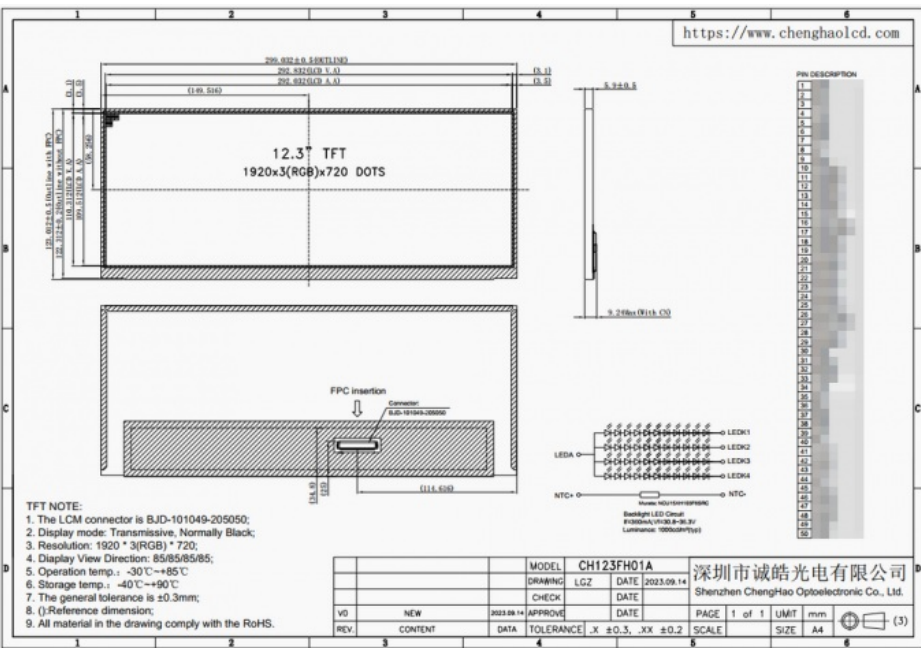
In summary, this Thin Film Transistor LCD Display is a versatile, high-performance display solution that excels in a variety of challenging conditions and applications. Its impressive brightness, large display area, and rugged construction are complemented by the advanced TFT technology that lies at its core. This product is designed to deliver not only exceptional image quality but also to provide a reliable and user-friendly interface for any system it integrates with, making it a top choice for designers and engineers looking for a premium display solution.

Customization:

CH123FH01A is a 12.3-inch IPS TFT display specially designed for vehicle instrumentation. It features high resolution, wide viewing angle and high brightness. Of course, as a professional Lcd Module manufacturer, Chenghao Optoelectronic can provide professional customization services according to customer requirements. The following are the customization options for the CH123FH01A display:

- (1)Resolution customization: The default resolution of CH123FH01A is 1920x720 pixels, but we can provide customized resolution options according to customer needs to meet the requirements of different application scenarios.
- (2)Brightness adjustment: The default brightness of CH123FH01A is 1000 cd/m2. If the customer has special requirements, we can adjust the brightness according to the needs to adapt to the display needs under different lighting conditions.
- (3)Temperature range expansion: The operating temperature range of CH123FH01A is -30°C to +85°C. If customers need to use the display in a wider temperature range, we can customize the temperature range as required to ensure that the display can survive extreme temperature conditions reliability and stability.
- (4)Interface customization: CH123FH01A uses LVDS interface, but if customers need other interface types, such as SPI, MCU, RGB, etc., we can customize the interface according to customer requirements to connect and communicate with other devices.
- (5)Size customization: The appearance size of CH123FH01A is 299.032x123.012x5.9 mm, the viewing area size is 292.832x110.312 mm, and the effective area size is 292.032x109.512 mm. If customers have special size requirements, we can customize them to meet their specific installation needs.

To sum up, the CH123FH01A display has a variety of customization options, including customization in resolution, brightness, temperature range, interface and size. We will provide customized solutions according to customer needs to ensure the best performance and adaptability of the display in specific application scenarios. If you have any other customization needs or further questions, please feel free to contact us.



Packing and Shipping:

The TFT LCD Display is carefully packaged in an anti-static bag to prevent any electrical interference or damage. The bag ensures that the display is shielded from electrostatic discharges during the handling and shipping process. Surrounding the anti-static bag, the

product is cushioned with high-density foam that conforms to the shape of the display, providing additional protection against shocks and vibrations that can occur during transit.

Once cushioned, the display is placed in a sturdy, custom-designed cardboard box that fits the product snugly, minimizing movement and reducing the risk of damage. The box is sealed with heavy-duty packing tape to secure its contents. Additionally, fragile stickers are applied to the outside of the package to alert carriers to handle the box with care.

Prior to shipping, each package is weighed and labeled with the appropriate shipping information, including a tracking number for real-time monitoring of the package's journey. The TFT LCD Display is then dispatched through a reliable courier service to ensure timely and safe delivery to our customers. Upon shipment, customers are provided with the tracking details to follow the progress of their order until it reaches its destination.

FAQ:

Q: What is the brand name of the TFT LCD Display product?

A: The brand name of the TFT LCD Display product is chenghao optoelectronic.

Q: What is the model number of this TFT LCD Display?

A: The model number is CH123FH01A.

Q: Where is this TFT LCD Display manufactured?

A: This TFT LCD Display is manufactured in China.

Q: What certifications does the CH123FH01A TFT LCD Display have?

A: The CH123FH01A TFT LCD Display has CE, ISO9001, RoHS, and SGS certifications.

Q: What is the minimum order quantity for this product?

A: The minimum order quantity for the CH123FH01A TFT LCD Display is 1 Piece.

Q: How is the TFT LCD Display packaged?

A: All the products are packed in the right way to keep them safe. For small sizes of products, we use tray + carton, and for bigger sizes, we use foam slot + carton. We also design packages according to customers' requirements.

Q: What is the delivery time for the CH123FH01A TFT LCD Display?

A: The delivery time for the CH123FH01A TFT LCD Display is 3 to 7 days.

Q: What payment terms are accepted for purchasing this TFT LCD Display?

A: Accepted payment terms are T/T, AliPay, and PayPal.

Q: What is the supply ability for the TFT LCD Display?

A: The supply ability is 50,000,000 pieces per month.



Shenzhen ChengHao Optoelectronic Co., Ltd.



+86 755-27806536



add@chenghaolcm.com



chenghaolcd.com

7th floor, building C5, Hengfeng Industrial City, Hangcheng street, Bao'an District, Shenzhen