



## 1000cd/M2 High Brightness Stretched Lcd Display With IPS Full Viewing Angle

### Our Product Introduction

for more products please visit us on [chenghaolcd.com](http://chenghaolcd.com)

#### Basic Information

- Place of Origin: China
- Brand Name: chenghao optoelectronic
- Certification: CE, ISO9001, Rose, SGS
- Model Number: CH123FH01A
- Minimum Order Quantity: 100 pcs
- Packaging Details: All the products are packed in right way to keep it safe. For small sizes of products we use tray + carton, For bigger sizes we use foam slot + carton. we also design packages according to customers' requirements
- Delivery Time: 3~7 Days
- Payment Terms: T/T, AliPay, PayPal
- Supply Ability: 50000000 pcs/month



#### Product Specification

- Product Name: High Brightness Stretched Lcd Display
- Backlight Color: White LED
- Storage Temperature: -40 ~ +90 °C
- Resolution: 1920x720
- Connector Pin Number: 50 Pins
- Display Mode: IPS / Transmissive / Normally Black
- Interface: LVDS
- Display Colors: 16M
- Viewing Area: 292.832 (w) X 122.312 (H) Mm
- Highlight: Full Viewing Angle Stretched Display, 1000cd/M2 Stretched Lcd Display, IPS Stretched Lcd Display



#### More Images





## Product Description

### Product Description:

The TFT LCD (Thin Film Transistor Liquid Crystal Display) technology has become a prevalent choice in modern display applications, offering high-quality visuals and reliable performance. A TFT screen is not just a display; it's an integral part of user interaction with various devices, from control panels to multimedia systems. Our latest TFT LCD Display product is designed to cater to the demands of advanced display requirements with its exceptional features and robust build quality.

The overall dimensions of the product are 229.032 mm wide, 123.012 mm high, and only 5.9 mm thick. This long shape makes it suitable for integration into automotive central control, industrial control terminals and other equipment.

The Active Area of the screen, where the actual visual content is displayed, measures 292.032 mm in width and 109.512 mm in height. This large active area ensures that users have ample space for viewing content, making it easier to interact with on-screen elements, and providing an immersive viewing experience. Whether it's for detailed graphical interfaces, vibrant multimedia content, or crisp text display, the ample Active Area serves a multitude of display purposes with ease.

An essential attribute of any display technology is its lifespan. Our TFT LCD Display is designed to last, with a Lifetime of 50,000 hours. This longevity ensures that the Thin Film Transistor Monitor can be used extensively over many years without a decrease in visual quality or performance. For businesses and consumers alike, this means a reliable display solution that won't require frequent replacements, ensuring a good return on investment.

Understanding the diverse environments in which displays operate, our TFT LCD Display has been engineered to withstand a wide range of Operating temperatures, from as low as -30 °C to as high as +85 °C. This robustness in Operating temperature tolerance guarantees that the Thin Film Transistor Screen can endure extreme conditions without suffering damage.

The viewable area of the display is another highlight, with a width of 292.832 mm and a height of 122.312 mm, which can display 1920\*720 pixel videos or pictures. It also provides a comfortable viewing experience from all angles, which is crucial for displays used in public spaces or where there may be multiple viewers.

In conclusion, our TFT LCD Display stands out as an advanced Thin Film Transistor Screen that combines a sleek, compact design with a generously sized viewing and active area. It is built to last, with a significant lifespan and the ability to withstand a broad range of storage temperatures. Whether you are looking for a display for an industrial application, a commercial kiosk, or a high-end consumer device, our Thin Film Transistor Monitor is a versatile and durable choice that will deliver consistent performance and high-quality visuals. Upgrade to our TFT LCD Display and experience the difference in clarity, longevity, and reliability.

### Technical Parameters:

Parameter	Specification
Number of dots	1920*720
Operating Temperature	-30 ~ +85 °C
Display Area Size	12.3 inch
Viewing Area	292.832 (W) x 122.312 (H) mm
Display Mode	IPS / Transmissive / Normally Black
Contrast Ratio	800:1
Interface	LVDS
Connector Pin Number	50 Pins
Display Colors	16M
Active Area	292.032 (W) x 109.512 (H) mm

### Applications:

This High Brightness Stretched Lcd Display product boasts an impressive active area of 292.032 (W) x 109.512 (H) mm, providing a vivid and expansive viewing experience. The Thin Film Transistor Screen displays up to 16 million colors, delivering a rich and vibrant visual output that is perfect for a wide range of applications. Whether it's for industrial control panels, medical devices, or advertising displays, the CH123FH01A model caters to all with its versatile display capabilities.

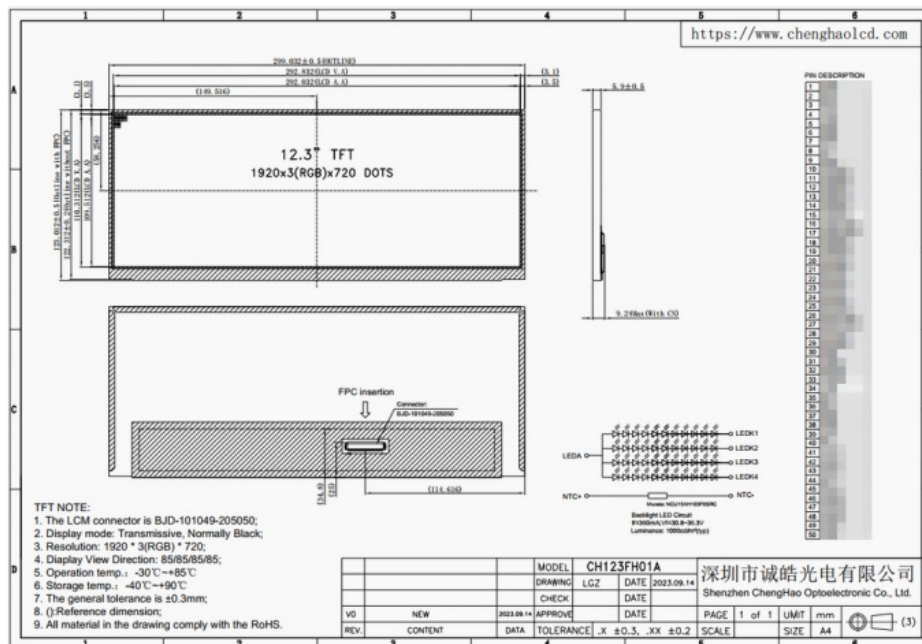


## Customization:

CH123FH01A is a 12.3-inch IPS TFT display for vehicle instrumentation, featuring high resolution, wide viewing angle and high brightness. The following are customization instructions for CH123FH01A:

- (1)Resolution customization: According to customer needs, we can provide customized resolution options to meet the requirements of different application scenarios. Customers can choose the appropriate resolution according to actual needs.
- (2)Brightness adjustment: The brightness of CH123FH01A is 1000 cd/m2. If the customer has special requirements, we can adjust the brightness according to the needs to adapt to the display needs under different lighting conditions.
- (3)Temperature range expansion: The operating temperature range of CH123FH01A is -30°C to +85°C. If customers need to use the display in a wider temperature range, we can customize the temperature range as required to ensure that the display can survive extreme temperature conditions reliability and stability.
- (4)Interface customization: CH123FH01A uses LVDS interface. If customers need other interface types, such as SPI, MCU, RGB, etc., we can customize the interface according to customer requirements to connect and communicate with other devices.
- (5)Special size requirements: The appearance size of CH123FH01A is 299.032\*123.012\*5.9 mm, the viewing area size is 292.832\*110.312 mm, and the effective area size is 292.032\*109.512 mm. If a customer has special size requirements, we can customize it to meet their specific installation needs.

To sum up, the CH123FH01A display has a variety of customization options, including customization in resolution, brightness, temperature range, interface and size. We will provide customized solutions according to customer needs to ensure the best performance and adaptability of the display in specific application scenarios. If you have any other customization needs or further questions, please feel free to contact us.



## Packing and Shipping:

Product Packaging for TFT LCD Display:

Each TFT LCD Display is securely packed in an anti-static bag to prevent electrostatic discharge during handling. The anti-static bag is then placed in a foam-padded box to protect the screen from physical damage such as impacts or pressure. The foam-padded box is then sealed with heavy-duty packing tape to ensure the contents remain secure during transit. For bulk orders, individual boxes are placed into a larger, sturdy cardboard box with additional padding material to prevent movement and potential damage. The outer box is clearly labeled with "Fragile - Handle with Care" to alert carriers of the delicate nature of the contents.

Shipping for TFT LCD Display:

All TFT LCD Displays are shipped via a reliable courier service to ensure timely and safe delivery. Tracking information is provided for each shipment, allowing customers to monitor their package's progress. Insurance is included with each shipment to protect against loss or damage during transport. We require a signature upon delivery to ensure the TFT LCD Display reaches the correct recipient. Expedited shipping options are available upon request for customers requiring faster delivery times.

## About Warranty and After-sales

The chenghao optoelectronic Model CH123FH01A, originating from China, is a high-quality Thin Film Transistor LCD Display that has been crafted to meet various application needs. This display is certified by CE, ISO9001, RoHS, and SGS, ensuring its compliance with international quality standards. With a minimum order quantity of just 1 piece, it allows even small-scale projects to benefit from its exceptional display quality.

## FAQ:

**Q: What is the brand name and model number of the TFT LCD display?**

**A:** The brand name of the TFT LCD display is chenghao optoelectronic, and the model number is CH123FH01A.

**Q: Where is the CH123FH01A TFT LCD display manufactured?**

**A:** The CH123FH01A TFT LCD display is manufactured in China.

**Q: What certifications does the CH123FH01A TFT LCD display hold?**

**A:** The CH123FH01A TFT LCD display holds CE, ISO9001, RoHS, and SGS certifications.

**Q: What is the minimum order quantity for the CH123FH01A TFT LCD display?**

**A:** The minimum order quantity for the CH123FH01A TFT LCD display is 1 piece.

**Q: How is the CH123FH01A TFT LCD display packaged for delivery?**

**A:** The CH123FH01A TFT LCD display is carefully packed to ensure its safety. For small sizes, we use a tray + carton, and for bigger sizes, we use a foam slot + carton. We also create custom packages based on customers' requirements.

**Q: What is the delivery time for the CH123FH01A TFT LCD display?**

**A:** The delivery time for the CH123FH01A TFT LCD display is typically between 3 to 7 days.

**Q: What payment methods are accepted for purchasing the CH123FH01A TFT LCD display?**

**A:** Accepted payment methods for purchasing the CH123FH01A TFT LCD display include T/T (Telegraphic Transfer), AliPay, and PayPal.

**Q: What is the supply ability of chenghao optoelectronic for the CH123FH01A TFT LCD display?**

**A:** Chenghao optoelectronic has a supply ability of 50,000,000 pieces per month for the CH123FH01A TFT LCD display.



**Shenzhen ChengHao Optoelectronic Co., Ltd.**



+86 755-27806536



add@chenghaolcm.com



chenghaolcd.com

7th floor, building C5, Hengfeng Industrial City, Hangcheng street, Bao'an District, Shenzhen