



## 12.3 inch Automotive Bar Type Lcd Display Support -30 +85 wide temperature

### Our Product Introduction

for more products please visit us on [chenghaolcd.com](http://chenghaolcd.com)

#### Basic Information

- Place of Origin: China
- Brand Name: chenghao optoelectronic
- Certification: CE, ISO9001, Rose, SGS
- Model Number: CH123FH01A
- Minimum Order Quantity: 100 pcs
- Packaging Details: All the products are packed in right way to keep it safe. For small sizes of products we use tray + carton, For bigger sizes we use foam slot + carton. we also design packages according to customers' requirements
- Delivery Time: 3~7 Days
- Payment Terms: T/T, AliPay, PayPal
- Supply Ability: 50000000 pcs/month



#### Product Specification

- Product Name: Automotive Bar Type Lcd Display
- Lifetime: 50,000 Hours
- Response Time: 16 Ms
- Backlight Color: White LED
- Viewing Direction: 85/85/85/85
- Contrast Ratio: 800:1
- Viewing Area: 292.832 (w) X 122.312 (H) Mm
- Resolution: 1920\*720
- Operating Temperature: -30 ~+85 °C
- Highlight: 12.3 inch Bar Type Lcd Display , Automotive Bar Type Lcd Display



#### More Images





## Product Description

### Product Description:

The TFT LCD Display is Automotive Bar Type Lcd Display, offering a sophisticated and cutting-edge visual experience. This advanced display technology, known as Thin Film Transistor Lcd, integrates the latest in TFT techniques to provide users with superior image quality, vibrant colors, and exceptional viewing angles. This product is designed to cater to a wide range of applications, from industrial control panels to modern consumer electronics, making it an ideal choice for those seeking a high-quality display solution.

Equipped with an LVDS interface, this TFT LCD Display ensures high-speed data transfer, reduced noise, and enhanced image stability, which is crucial for high-definition video and graphical content. The LVDS technology is renowned for its efficiency and reliability, making this display not only visually impressive but also robust in terms of signal integrity and operational longevity. This interface, in conjunction with the 50 Pins connector, makes for a seamless and hassle-free integration with a variety of systems and devices.

With its generous 12.3 Inch display area size, the TFT LCD Display provides an expansive canvas for all your visual needs. Whether it's for professional applications that require detailed imagery or for entertainment purposes where screen real estate is crucial, this display delivers ample space without compromising on quality. The large screen size ensures that users can enjoy a clear and immersive viewing experience, making every interaction with the device more engaging and effective.

One of the most striking features of this TFT LCD Display is its ability to render up to 16M display colors. This vast color range allows for incredibly vivid and accurate color reproduction, making images appear more lifelike and engaging. The richness of color and depth that this display provides is truly remarkable, making it the perfect choice for applications where color fidelity is of utmost importance. Furthermore, this TFT LCD Display has been engineered to withstand a wide range of temperatures, with a operating temperature tolerance of -30 to +85 °C. This robust temperature range ensures that the display remains reliable and functional even in extreme conditions, providing peace of mind for users who operate in varying environments. Whether it's used in cold storage applications or in areas exposed to high heat, this display maintains its performance and longevity.

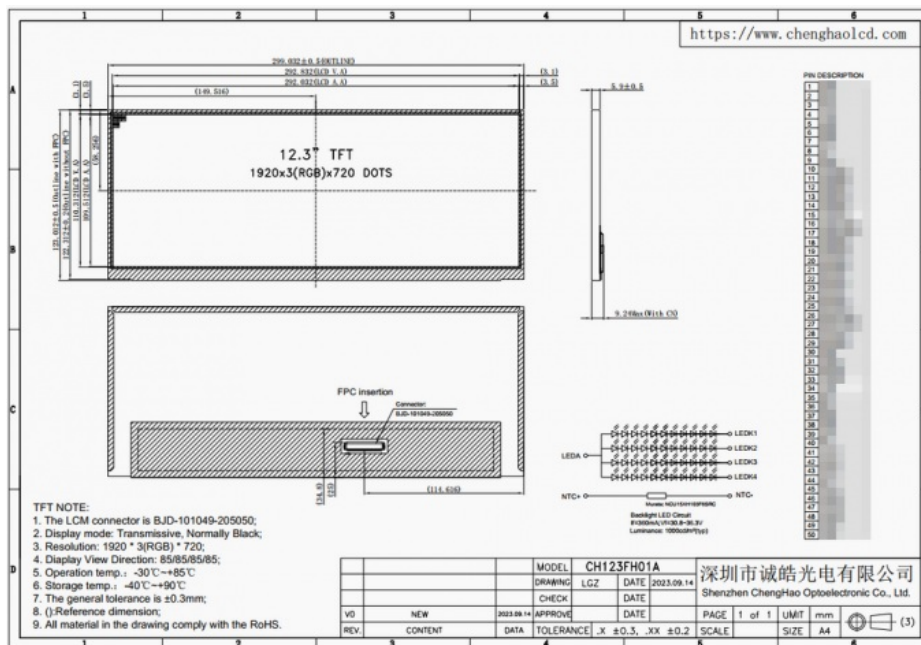
The product's durability is also reflected in its careful construction and use of high-quality materials. The 50 Pins connector is designed for secure and stable connections, reducing the risk of connectivity issues that could impact the display's performance. The overall design and engineering of the TFT LCD Display prioritize both functionality and durability, ensuring that the product is not only visually impressive but also built to last.

In summary, the TFT LCD Display is a remarkable Liquid Crystal Display Monitor that embodies the best of Thin Film Transistor Lcd technology. Its 12.3 Inch display area, 16M display colors, robust LVDS interface, and broad temperature tolerance come together to create a superior product suitable for a wide array of applications. Whether you are in the market for an industrial-grade display or seeking a high-performance monitor for consumer electronics, this TFT LCD Display stands out as a premium choice that will not disappoint.

### Features:

- \* Sunlight Readable
- \* Wide Temperature
- \* High Brightness

The CH123FH01A boasts an impressive active area of 292.032 (w) x 109.512 (h) mm, and its IPS, transmissive, and normally black display mode ensures crisp and vivid visuals. The display area is a substantial 12.3 inches, fitting seamlessly into various applications. With a brightness of 1000 cd/m<sup>2</sup> and a contrast ratio of 800:1, this Thin Film Transistor Screen delivers unmatched clarity and detail in every image.



### Technical Parameters:

Parameter	Specification
Operating Temperature	-30 ~ +85 °C
Storage Temperature	-40 ~ +90 °C
Interface	LVDS
Connector Pin Number	50 Pins
Resolution	1920*720
Outline Size	229.032 (W) x 123.012 (H) x 5.9 (T) mm
Display Mode	IPS / Transmissive / Normally Black
Viewing Direction	85/85/85/85
Viewing Area	292.832 (W) x 122.312 (H) mm
Contrast Ratio	800:1

### Applications:

Application occasions and scenarios for the CH123FH01A model are vast and diverse. This Thin Film Transistor Screen is ideal for automotive displays, offering drivers clear and bright information readouts, even under direct sunlight. It's also perfectly suited for high-end medical equipment, where precise and reliable image reproduction is crucial. Digital signage and kiosks in shopping centers, airports, and train stations can leverage the high brightness and contrast to deliver eye-catching advertisements and information.



Furthermore, in the realms of gaming, entertainment, and professional monitors, the CH123FH01A enhances user experience with its superior display quality. It's also applicable in the field of industrial control where durability, reliability, and clarity of display are paramount. Educational tools and devices, as well as home appliances, can also benefit from the clear, bright screen to enhance interactivity and user-friendliness.

### Customization:

Experience superior quality visuals with the chenghao optoelectronic Thin Film Transistor LCD Display, model CH123FH01A. This high-performance Liquid Crystal Display Monitor is engineered to provide vibrant display colors, with a 16M color range, and precise image quality. The Thin Film Transistor lcd technology ensures reliable operation in a range of temperatures, making it suitable for diverse applications. Customize your TFT LCD Display to meet the exact specifications of your project with our comprehensive product customization services.

- (1)Resolution customization: According to customer needs, the resolution can be customized to meet the requirements of specific application scenarios.
- (2)Brightness adjustment: According to the actual needs of customers, the brightness can be adjusted to adapt to the lighting conditions

of different environments.

(3)Temperature range extension: If customers need to use the display over a wider temperature range, the temperature range can be customized to ensure proper operation of the display in extreme temperature conditions.

(4)Interface customization: According to customer requirements, the interface type of the display screen can be customized to connect and communicate with other devices.

(5)Special size requirements: If customers have special requirements for the appearance size, viewing area size or effective area size of the display, they can be customized to meet their specific installation needs.

## Packing and Shipping:

The TFT LCD Display is packaged with utmost care to ensure its safety and integrity during transit. The product is first enclosed in a static-free bag, which helps to prevent any electrical damage. This bag is then cushioned with high-quality, shock-absorbent foam that conforms to the shape of the display to reduce the risk of pressure points and physical damage.

The foam-encased display is then placed inside a sturdy, corrugated cardboard box that is specifically designed for electronics. The box is sealed with heavy-duty packing tape and labeled with "Fragile" and "Handle with Care" to alert handlers of the delicate contents. Inside the box, silica gel packets are included to absorb any moisture and maintain a dry environment during shipping.

Prior to dispatch, the package undergoes a thorough inspection to ensure that it is securely sealed and ready for shipment. The TFT LCD Display is then shipped using a reliable courier service that offers tracking and delivery confirmation to ensure that the product reaches its destination safely and on time.

## FAQ:

**Q1: What is the brand and model number of your TFT LCD displays?**

**A1:** Our TFT LCD displays are manufactured by chenghao optoelectronic, and the model number for one of our products is CH123FH01A.

**Q2: Where are the chenghao optoelectronic TFT LCD displays manufactured?**

**A2:** The TFT LCD displays by chenghao optoelectronic are manufactured in China.

**Q3: What certifications do your TFT LCD displays hold?**

**A3:** Our TFT LCD displays are certified with CE, ISO9001, Rose, and SGS certifications, ensuring compliance with international quality and safety standards.

**Q4: What is the minimum order quantity for the CH123FH01A TFT LCD display?**

**A4:** The minimum order quantity for the CH123FH01A TFT LCD display is 1 Pc, allowing you to purchase our products without a large initial investment.

**Q5: How do you package your TFT LCD displays, and what are the delivery details?**

**A5:** Our TFT LCD displays are carefully packaged to ensure their safety during transit. For smaller sizes, we use a tray plus carton, and for larger sizes, we use a foam slot plus carton. We can also design custom packages according to our customers' requirements. The delivery time for our products is typically 3 to 7 days.

**Q6: What payment terms do you accept for purchasing your TFT LCD displays?**

**A6:** We accept various payment terms for your convenience, including T/T (Telegraphic Transfer), AliPay, and PayPal.

**Q7: What is the supply ability of chenghao optoelectronic TFT LCD displays?**

**A7:** We have a robust supply ability, capable of producing up to 50,000,000 pcs/month, ensuring that we can meet both small and large order demands efficiently.



**Shenzhen ChengHao Optoelectronic Co., Ltd.**



+86 755-27806536



add@chenghaolcm.com



chenghaolcd.com

7th floor, building C5, Hengfeng Industrial City, Hangcheng street, Bao'an District, Shenzhen