



## 10.1 Inch LCD Touch Screen Display 1024x600 Resolution With LVDS Interface

### Our Product Introduction

for more products please visit us on [chenghaolcd.com](http://chenghaolcd.com)

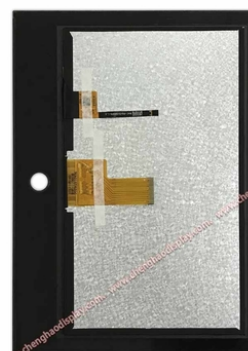
#### Basic Information

- Place of Origin: China Shenzhen
- Brand Name: Chenghao Optoelectronic
- Certification: CE RoHS FCC
- Model Number: CH101WS08C-CTD
- Minimum Order Quantity: 100 pcs
- Packaging Details: All the products are packed in right way to keep it safe. For small sizes of products we use tray + carton, For bigger sizes we use foam slot + carton. we also design packages according to customers' requirements
- Delivery Time: 3~7 Days
- Payment Terms: TT or Others
- Supply Ability: 20000000 pcs/month



#### Product Specification

- Touch Glass Cover Hardness: 6H
- Product Name: 10.1 Inch Display Touch Screen
- Viewing Area: 223.32\*125.88 Mm
- Touch Glass Cover Transmittance:  $\geq 50\%$
- Resolution: 1024\*600 Dots
- Touch Glass Cover Lens: 1.1 Mm
- Display Type: 10.1"TFT + CTP
- Capacitive Touch Panel GT911 Driver IC:
- Contrast Ratio: 800:1
- Highlight: 10.1 Inch LCD Touch Screen Display ,



#### More Images





## Product Description

### Product Description:

#### 10.1 Inch Display Touch Screen - Perfect for Your Display Needs

Are you looking for a high-quality display solution for your electronic devices?

Look no further than Chenghao Optoelectronic's 10.1 Inch Display Touch Screen. This innovative product combines a touch-sensitive screen with a thin-film-transistor LCD to provide a user-friendly interface and responsive touch technology.

#### Product Overview

CH101WS08C-CTD is a 10.1-inch full-color TFT LCD module offered by Chenghao Optoelectronic. This module is designed for various applications such as industrial control, home equipment, medical equipment, and vehicle-mounted equipment. It provides a high-resolution display with a resolution of 1024x600 dots and supports IPS display technology, ensuring full viewing angles. The module has a luminance of 1000 cd/m2, making it sunlight readable.

One of the key features of CH101WS08C-CTD is its capacitive touch panel, which supports multi-touch and enables seamless human-computer interaction. The touch panel uses the GT911 IC and operates at a voltage range of 2.8V-3.3V. It has a transmittance of  $\geq 50\%$  and a cover hardness of 6H, providing durability and clarity.

Module No	CH101WS08C-CTD
Display Mode	IPS/Transmissive/Normally Black
Viewing Direction	80/80/80/80
Resolution	1024*600 dots
Brightness	1000 cd/m2
Module Interface	LVDS
Storage Temperature	-30~+80 °C
Operating Temperature	-20~+70 °C
Contrast	800
Touch Type	CTP

### Features:

**Thin-Film-Transistor (TFT) Technology:** This display uses TFT technology, which provides high resolution and excellent image quality. This makes it ideal for applications that require precise and detailed visuals.

**Capacitive Touchscreen Technology:** The capacitive touchscreen technology allows for a more intuitive and responsive touch experience. It can recognize multiple touch points and gestures, making it easier to use and navigate.

**High Resolution:** With its 10.1" display and 222.72\*125.28 mm active area, this 10.1 Inch Display Touch Screen offers a high resolution for crisp and clear visuals.

**Color Saturation:** With a color saturation of 16 M, this display can produce vibrant and lifelike colors, making images and videos look more vivid and realistic.

**Wide Viewing Angle:** The display has a viewing angle of 80/80/80/80, which means that the screen can be viewed clearly from different angles without any distortion or color loss.

#### Conclusion

The 10.1 Inch Display Touch Screen is a powerful and versatile display technology that offers high resolution, responsive touch capabilities, and vibrant colors. Its compact size, wide viewing angle, and thin-film-transistor technology make it a perfect choice for various applications. With this product, users can enjoy a seamless and immersive visual experience like never before.

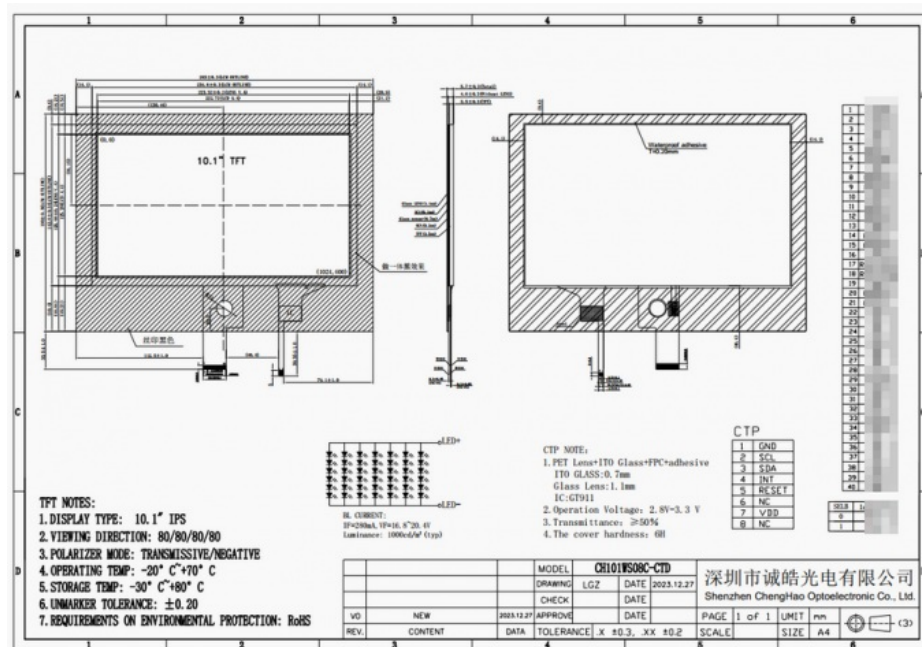
### Applications:

#### Application Scenarios

The touch lcd module is suitable for a wide range of applications, including but not limited to:

- Smartphones and tablets
- Laptops and computers
- Industrial control systems
- Medical equipment
- Gaming consoles

In terms of customization, Chenghao Optoelectronic offers various services to meet customers' specific requirements. For module customization, they can redesign the shape and structure of the FPC to perfectly fit the installed equipment. Additionally, customers have the flexibility to choose the appropriate brightness for the backlight component, with a maximum brightness of 2800 cd/m<sup>2</sup>. The module interface can also be customized according to customer needs, with supported interface types including LVDS. Overall, the CH101WS08C-CTD module combines high-resolution display capabilities, capacitive touch functionality, and customization options to cater to a wide range of applications. Its IPS display technology ensures optimal viewing angles, while the capacitive touch panel enables intuitive interaction. Chenghao Optoelectronic's customization services further enhance the module's adaptability to specific customer requirements.



At TFT LCD Corporation, we take great care in packaging and shipping our products to ensure they arrive at our customers' doorstep in perfect condition. If for any reason, our customers are not satisfied with the product or experience any issues during shipping, our customer service team is available to assist and resolve any concerns.

## FAQ:

---

**Q: What is the brand name of this product?**

A: The brand name of this product is Chenghao Optoelectronic.

**Q: What is the model number of this product?**

A: The model number of this product is CH101WS08C-CTD.

**Q: Where is this product manufactured?**

A: This product is manufactured in China, specifically in Shenzhen.

**Q: What certifications does this product have?**

A: This product is certified by CE, RoHS, and FCC.

**Q: Is there a minimum order quantity for this product?**

A: No, there is no minimum order quantity required for this product.



**Shenzhen ChengHao Optoelectronic Co., Ltd.**



+86 755-27806536



add@chenghaolcm.com



chenghaolcd.com

7th floor, building C5, Hengfeng Industrial City, Hangcheng street, Bao'an District, Shenzhen