



Military Grade 10.1 Inch Touchscreen Display Module With CE RoHS Certificate

Our Product Introduction

for more products please visit us on chenghaolcd.com

Basic Information

- Place of Origin: China Shenzhen
- Brand Name: Chenghao Optoelectronic
- Certification: CE RoHS FCC
- Model Number: CH101WS08C-CTD
- Minimum Order Quantity: 100 pcs
- Packaging Details: All the products are packed in right way to keep it safe. For small sizes of products we use tray + carton, For bigger sizes we use foam slot + carton. we also design packages according to customers' requirements
- Delivery Time: 3~7 Days
- Payment Terms: TT or Others
- Supply Ability: 20000000 pcs/month



Product Specification

- Product Name: Touchscreen Display Module
- Module Outline Size: 263*193*5.7 Mm
- Touch Panel Type: Capacitive
- Storage Temperature: -30 ~ +80°C
- Warranty: 12 Months
- Backlight Type: 36 Pcs White LED
- Viewing Angle: 80/80/80/80
- Contrast Ratio: 800:1
- Color Saturation: 16 M
- Highlight: Military Grade Touchscreen Display Module, RoHS Touchscreen Display Module, 10.1 Inch Touchscreen Display Module



More Images





Product Description

Product Description:

CH101WS08C-CTD is a 10.1-inch full-color TFT LCD module provided by Chenghao Optoelectronic, with excellent performance and multi-functional features. The CH101WS08C-CTD module supports LVDS interface, providing stable and reliable data transmission. At the same time, the module is equipped with Capacitive touch panel supports multi-touch. The IC of the touch panel is GT911, the operating voltage is 2.8V-3.3V, and it has high sensitivity and precise touch experience. The module adopts IPS/Transmissive/Normally Black display mode and can present Clear and vivid image effect. The module has a resolution of 1024x600 pixels, 80/80/80/80 free viewing angles, and a brightness of 1000 cd/m2 to ensure clear visibility under various lighting conditions. Module operating temperature The range is -20~+70°C, and the storage temperature range is -30~+80°C, adapting to various environmental conditions. The module's appearance size is 263*193*5.7 mm, which is suitable for flexible installation and use in different application scenarios.

Lcd Type	10.1" TFT+CTP
Number of dots	1024*600
Display Mode	IPS/Transmissive/Normally Black
Viewing Direction	80/80/80/80
LcM Interface	LVDS
Touch Panel Type	Capacitive
Touch Panel Interface	I2C
Luminance	1000 cd/m2

Specification

Product Name: TFT LCD Capacitive Touchscreen

Touch Panel Operation Voltage: 2.8V~3.3V

Display Mode: Transmissive / IPS / Normally Black

Active Area: 222.72*125.28 Mm

Capacitive Touch Panel Driver IC: GT911

Screen Size: 10.1 Inch

Product Features:

LCD display module

TFT Liquid Crystal Capacitive Screen

TFT LCD module

High sensitivity and accuracy of touch response

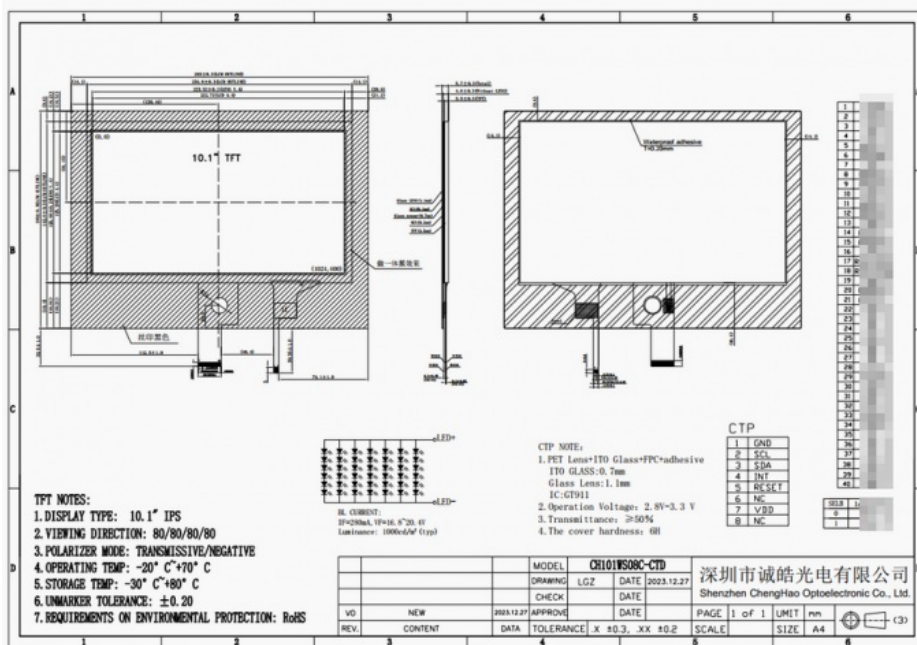
Wide operating voltage range for touch panel

Provides clear and sharp display with transmissive, IPS, or normally black mode

Large active area of 222.72*125.28 mm for better viewing experience

Equipped with GT911 driver IC for efficient and reliable touch panel performance

10.1 inch screen size perfect for various applications such as tablets, smartphones, and industrial equipment



Features:

High Resolution: With a screen size of 10.1 inches and 16 million color saturation, this display module provides clear and vivid images.

Multi-Touch Technology: The capacitive touch panel allows for multi-touch gestures, making it more user-friendly and responsive.

Wide Viewing Angle: The viewing angle of 80/80/80/80 ensures that the screen can be viewed clearly from different directions, making it suitable for group presentations and collaborations.

Durable: The high-quality materials used in production make this touchscreen resistant to scratches and damages, ensuring a longer lifespan.

Easy to Use: This touchscreen is designed to be user-friendly, with a simple and intuitive interface, making it suitable for people of all ages.

Customization:

Dear customer, thank you for your attention to Chenghao Optoelectronic's LCD module customization services. We are willing to provide you with high-quality customized solutions to meet your specific needs. The following is a detailed description of our LCD module customization services:

Module customization

Our LCD module customization services include but are not limited to the following:

- (1) **FPC customization:** We can redesign the shape and structure of the FPC according to the customer's project needs so that it can perfectly fit the installation equipment.
- (2) **Backlight design:** We can provide customers with backlight components with a maximum brightness of 2800 cd/m². Customers can choose the appropriate brightness according to actual needs.
- (3) **Module interface customization:** Our display module can define the interface type according to customer requirements. Supported interface types include SPI, MCU, RGB, MIPI, LVDS, HDMI, etc.
- (4) For customers with touch interaction requirements, we provide capacitive touch solutions and resistive touch solutions. Among them, the core of the capacitive touch solution is to design a touch glass cover that meets the glass thickness and hardness of the application device.

Packaging customization

Our LCD module packaging adopts the following methods:

- (1) All transport boxes meet export hardness standards.
- (2) All boxes will be padded with foam to prevent screen damage.
- (3) Our product packaging uses large boxes plus small boxes.
- (4) Each box weighs no more than 3.5 kilograms, and the dimensions may vary according to standards. We will use pallets or wooden frames to transport the goods.

As a professional LCD module supplier, Chenghao Optoelectronic has rich experience and a professional team, committed to providing customers with high-quality products and customized services. Our products are widely used in various industries such as communication equipment, household appliances, industrial control, medical equipment, and vehicle-mounted equipment, and have passed ISO, CE, and ROHS certifications to ensure product quality and compliance with international standards.



If you have any needs or questions about Chenghao Optoelectronic's LCD module customization services, please feel free to contact us. We will wholeheartedly provide you with a satisfactory solution.

Packing and Shipping:

Packaging and Shipping

When it comes to packaging and shipping our TFT LCD Capacitive Touchscreen, we take great care to ensure that the product arrives to our customers in the best condition possible.

The screen is first wrapped in a layer of protective foam to prevent any scratches or damage during transportation. It is then placed in a sturdy cardboard box, which is designed to withstand the rigors of shipping.

Inside the box, the screen is further secured with additional layers of foam and packaging material. This ensures that the screen stays in place and is not damaged by any external forces.

As an added measure of protection, we also include fragile stickers on the box to alert shipping personnel to handle the package with care.

For international shipments, we use strong and durable wooden crates to provide extra protection for the product during long distance transportation.

Our shipping process is also carefully monitored to ensure that the product is delivered to our customers in a timely and efficient manner. We work with trusted logistics partners to guarantee safe and timely delivery.

Overall, our packaging and shipping process is designed to provide our customers with peace of mind knowing that their TFT LCD Capacitive Touchscreen will arrive in perfect condition.

FAQ:

Q: What is the brand name of this product?

A: The brand name of this product is Chenghao Optoelectronic.

Q: What is the model number of this product?

A: The model number of this product is CH101WS08C-CTD.

Q: Where is this product made?

A: This product is made in China, specifically in Shenzhen.

Q: What certifications does this product have?

A: This product is certified with CE, RoHS, and FCC.

Q: What is the minimum order quantity for this product?

A: There is no minimum order quantity for this product.

Q: How is this product packaged?

A: All the products are packed in a safe and secure manner. For smaller sizes, we use trays and cartons, while for bigger sizes, we use foam slots and cartons. We also have the ability to design custom packaging according to our customers' requirements.

Q: What is the estimated delivery time for this product?

A: The estimated delivery time for this product is 3 to 7 days.

Q: What are the available payment terms for this product?

A: The available payment terms for this product include TT and other options.

Q: What is the supply ability for this product?

A: The supply ability for this product is 20 million pieces per month.



Shenzhen ChengHao Optoelectronic Co., Ltd.



+86 755-27806536



add@chenghaolcm.com



chenghaolcd.com

7th floor, building C5, Hengfeng Industrial City, Hangcheng street, Bao'an District, Shenzhen