



China Supplier Small Size TFT LCD Module 3.5 Inch With I2C Touch Panel

Our Product Introduction

for more products please visit us on chenghaolcd.com

Basic Information

- Place of Origin: China Shenzhen
- Brand Name: Chenghao Optoelectronic
- Certification: RoHS CE FCC
- Model Number: CH350HV37A-CTC
- Minimum Order Quantity: 100 pcs
- Packaging Details: All the products are packed in right way to keep it safe. For small sizes of products we use tray + carton, For bigger sizes we use foam slot + carton. we also design packages according to customers' requirements
- Delivery Time: 3~7 Days
- Payment Terms: TT
- Supply Ability: 300K pcs/month



Product Specification

- Product Name: 3.5 Inch Tft Lcd Touch Display
- Operating Temperature: -20°C~70°C
- FPC Pin Numbers: 50 Pins
- Viewing Area: 49.76*74.24 Mm
- Color: 65K/262K
- Display Mode: TN/Normally White/Transmissive
- Touch Type: Capacitive
- Resolution: 320*480 Pixels
- Highlight: **Small Size TFT LCD Module, TFT LCD Module with I2C**



More Images





Product Description

Product Description:

Product name: 3.5-inch color LCD display
Model: CH350HV37A-CTC
LCD type: 3.5 inches TFT+CTP
Resolution: 320x480 pixels
Display mode: Transmissive/TN/Normally white
Viewing direction: 6 o'clock direction
LCD driver IC: ILI9488
Working temperature: -20~+70°C
Storage temperature: -30~+80°C
Brightness: 280 cd/m2
Module size: 66.54*94.96*4.56mm
Viewing area size: 49.76*74.24 mm
Effective area size: 48.96*73.44mm
Number of FPC pins: 50
Touch type: capacitive
Touch panel interface: I2C

Features: (1) Supports use in wide temperature environment (-20~+70°C).

CH350HV37A-CTC is a 3.5-inch color LCD display with high resolution and excellent viewing angle direction. The display uses a transmissive/TN/normally white display mode with a viewing angle of 6 O'clock. Using ILI9488 driver IC, it can provide stable and reliable display effect.

The display is suitable for fields such as medical equipment, industrial control, home appliances and artificial intelligence. Its wide temperature working range is -20~+70°C, adapting to the needs of use under various environmental conditions.

In addition, CH350HV37A-CTC also has a capacitive touch function and uses an I2C interface to facilitate user interaction. The sensitivity and stability of the touch panel ensure a good touch experience.

Our products strictly follow quality management standards during the manufacturing process to ensure the stability and reliability of product quality. In addition, we provide one-year product after-sales guarantee service and provide customers with remote online technical support.

In order to ensure the safety of the product during transportation, we use packaging boxes that meet export hardness standards and fill them with foam material inside to prevent screen damage. We can also do personalized packaging according to customer requirements.

As a product of Shenzhen Chenghao Optoelectronics, CH350HV37A-CTC has ISO certification and CE/ROHS certification to ensure product quality and compliance. We have a professional after-sales service team to provide customers with strong guarantee and logistics technical support.

If you have any needs or projects for CH350HV37A-CTC or other LCD products, please feel free to contact us. We will wholeheartedly provide you with satisfactory solutions and quality services.

Features:

Welcome to the world of Small LCD Touch Screen! Our product is designed to make your life easier and more convenient.

Our Small LCD Touch Screen Display is a compact and powerful display that can be used in a variety of applications. It is equipped with a high-performance Driver IC, ILI9488, which ensures a smooth and efficient operation. The operating temperature range of -20°C to 70°C makes it suitable for use in different environments.

Key Features

Size: With an active area of 48.96*73.44 mm, our Small LCD Touch Screen is perfect for compact devices.

Touch Panel Interface: Our display comes with an I2C touch panel interface, making it easy to use and integrate into your projects.

Contrast Ratio: The contrast ratio of 500:1 ensures that you get clear and vibrant images on the display.

Easy to Use: Our Small LCD Touch Screen is user-friendly and can be easily controlled with the touch of your finger.

Versatile: This display can be used in various applications, including smart homes, industrial automation, healthcare devices, and more.

Technical Parameters:

Product Name	3.5 Inch TFT LCD Touch Display
Size	3.5 Inch
Touch Type	Capacitive
Color	65K/262K
Resolution	320*480 Pixels
Manufacturer	Chenghao Optoelectronic
Luminance	280 Cd/m2

Applications:

CH350HV37A-CTC is a powerful 3.5-inch color LCD display with a wide range of application fields and diverse uses. The product was developed by Shenzhen Chenghao Optoelectronics and has undergone strict quality inspection and certification to ensure its performance and reliability.

In the field of medical equipment, CH350HV37A-CTC can be used in medical equipment such as heart rate monitors and forehead thermometers to provide accurate data display and operation interfaces for the medical industry.

In the field of industrial control, the display can be used in industrial display equipment, such as industrial control panels and monitors, to help monitor and control production processes in real time.

The field of household appliances is also one of the application fields of CH350HV37A-CTC. It can be applied to smart home devices, such as smart coffee machines, smart refrigerators and kitchen range hoods, etc., providing user-friendly interface and operating experience.

The field of artificial intelligence is another important application field of CH350HV37A-CTC. It can be used in artificial intelligence devices such as smart robots to provide users with intuitive information display and interactive interfaces.

In addition to the above fields, CH350HV37A-CTC can also be used in multiple industries and application scenarios such as communication equipment, vehicle equipment, wearable equipment, and Internet of Things equipment. For example, it can be used for GPS navigation, digital photo frames, netbooks, fingertip pulse meters, vehicle display equipment, payment financial equipment, customer terminal equipment, elevator display equipment, industrial control equipment, instrumentation equipment, smart home equipment, security identification equipment and vending machines, etc.

To sum up, CH350HV37A-CTC, as a full-featured and stable LCD display, has a wide range of application fields and diverse uses.

Whether in the fields of medical, industrial, home appliances or artificial intelligence, it can provide high-quality display and interactive experience for various devices and systems. Shenzhen Chenghao Optoelectronics will continue to be committed to the research and development and innovation of LCD products, providing customers with high-quality, innovative, and market-competitive display modules and solutions.

Customization:

Chenghao Optoelectronics provides various forms of customized services to meet the different needs and requirements of customers. We are committed to providing customers with high-quality customized modules, packaging and shipping services.

FPC customization: According to the customer's project needs, we can redesign the shape and structure of the FPC to perfectly fit the installation equipment.

Backlight design: We can provide backlight components with a maximum brightness of 2800 cd/m2, and customers can choose the appropriate brightness according to actual needs.

Module interface customization: Our display module can define the interface type according to customer requirements. Supported interface types include SPI, MCU, RGB, MIPI, LVDS, HDMI, etc.

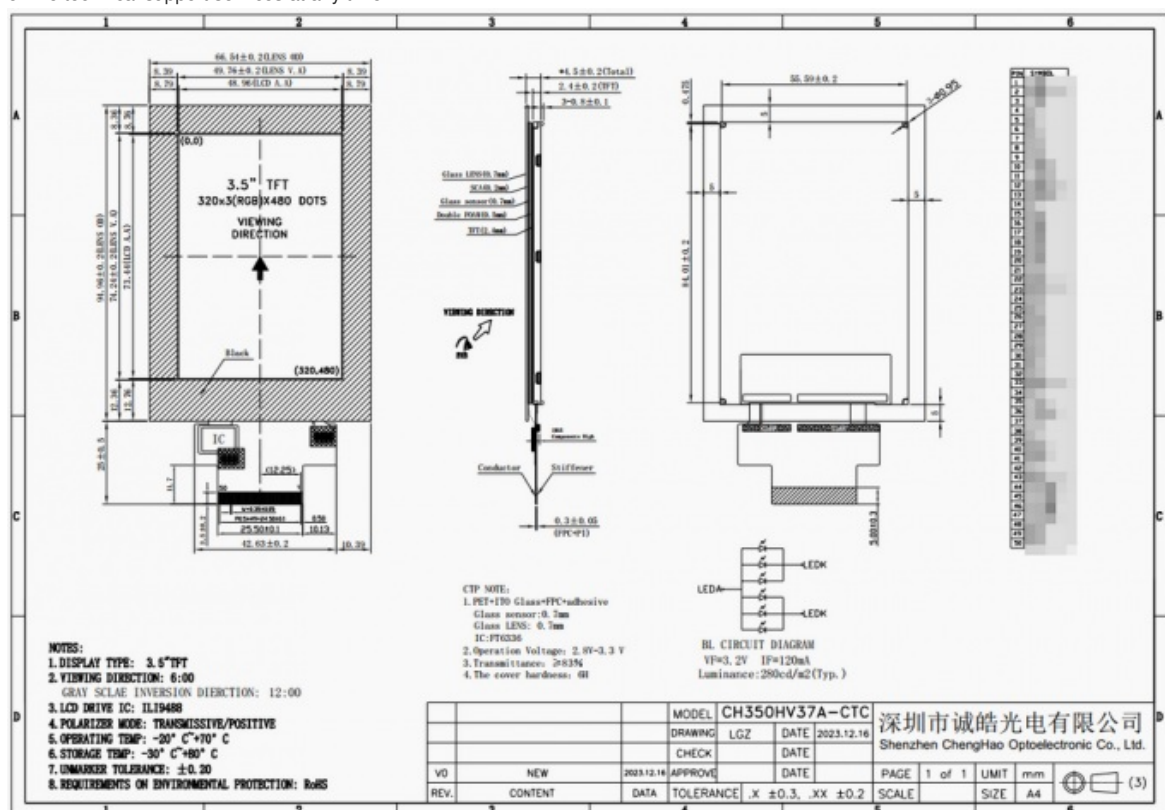
For customers with touch interaction needs, we provide capacitive touch solutions and resistive touch solutions.

In addition, in terms of product packaging, we use shipping boxes that meet export hardness standards and fill them with foam inside to prevent the display module from being damaged during transportation. We can also do personalized packaging according to customer requirements.

About Chenghao Optoelectronic:

We are a factory-type supplier with ISO certification. Our products undergo strict quality inspection and testing before shipment, and have passed CE/ROHS certification. We have a professional after-sales service team to provide strong guarantee and logistics technical services for your orders.

We provide one-year after-sales guarantee service to ensure that the products purchased by customers are supported and maintained during use. If customers encounter any technical problems during testing or using the product, our technical team will provide remote online technical support services at any time.





Shenzhen ChengHao Optoelectronic Co., Ltd.



+86 755-27806536



add@chenghaolcm.com



chenghaolcd.com

7th floor, building C5, Hengfeng Industrial City, Hangcheng street, Bao'an District, Shenzhen