



8 Inch TFT LCD Capacitive Touchscreen For Devices 1280*720 Dots Resolution

Our Product Introduction

for more products please visit us on chenghaolcd.com

Basic Information

- Place of Origin: China Shenzhen
- Brand Name: Chenghao Optoelectronic
- Certification: CE RoHS FCC
- Model Number: CH800WX04A-CT
- Minimum Order Quantity: 100 pcs
- Packaging Details: All the products are packed in right way to keep it safe. For small sizes of products we use tray + carton, For bigger sizes we use foam slot + carton. we also design packages according to customers' requirements
- Delivery Time: 3~7 Days
- Payment Terms: TT or Others
- Supply Ability: 20000000 pcs/month



Product Specification

- Product Name: TFT LCD Capacitive Touchscreen
- Viewing Angle: 85/85/85/85
- Touch Panel Interface: I2C
- Brightness: 1200 Cd/m2 (Can Be Modified According To Customer Requirements)
- Viewing Area: 177.24*99.96 Mm
- Touch Glass Cover Hardness: 6H
- Module FPC Pin Number: 30 Pins
- Warranty: 12 Months
- Operating Temperature: -30 ~ +85 °C
- Highlight: 8 Inch TFT LCD Capacitive Touchscreen ,
TFT LCD Capacitive Touchscreen For Devices



More Images





Product Description

Product Description:

Product Overview of TFT LCD Capacitive Touchscreen

Touch glass cover light transmittance $\geq 87\%$

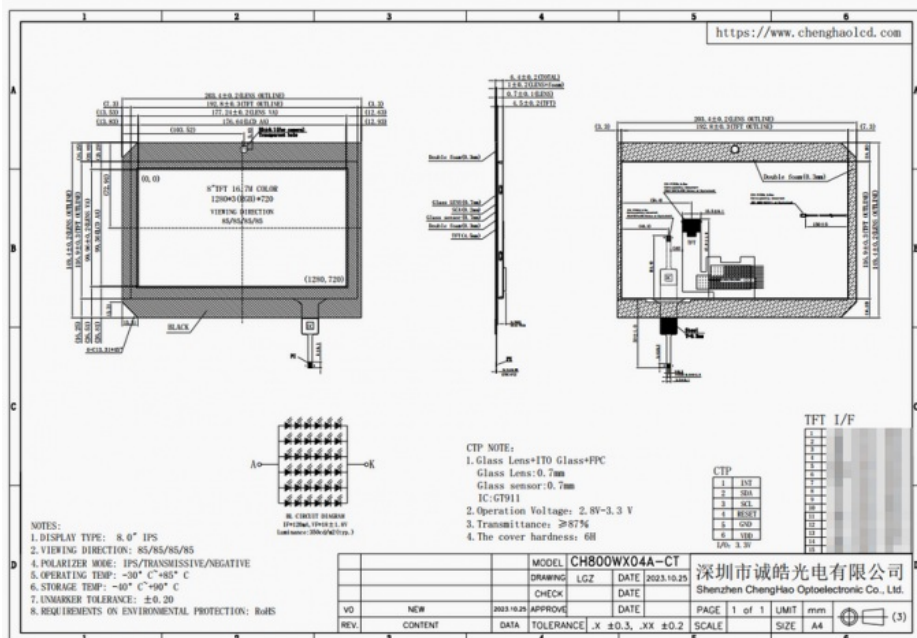
85/85/85/85 perspective

Viewing area 177.24*99.96mm

Module transmission interface LVDS

0.7 mm touch glass cover

In addition, the TFT LCD capacitive touch screen is also a multi-functional, high-performance display module with various features such as Sunlight Readable, wide viewing angle, wide temperature resistance, and sunlight visibility. With its superior quality and functionality, it is an excellent choice for most applications requiring a touch display module.



Features:

Module FPC Pin Number: 30 Pins

Technical Parameters:

Product Name:	TFT LCD Capacitive Touchscreen
Viewing Area:	177.24*99.96 Mm
Module FPC Pin Number:	30 Pins
Color Saturation:	16 M
Capacitive Touch Panel Driver IC:	GT911
Contrast Ratio:	800:1
Touch Panel Interface:	I2C
Touch Panel Type:	Capacitive
Display Mode:	Transmissive / IPS / Normally Black
Active Area:	176.64*99.36 Mm
Operating Temperature:	-30 ~ +85 °C

Applications:

TFT LCD Capacitive Touchscreen - The Perfect Display Solution for Your Needs
Are you looking for a high-quality display that offers excellent touch sensitivity and crystal-clear image quality? Look no further than the TFT LCD Capacitive Touchscreen from Chenghao Optoelectronic. This cutting-edge product is designed to meet all your display needs and enhance the user experience. With its advanced technology and superior features, it is the perfect solution for various applications and scenarios.

Product Overview
The TFT LCD Capacitive Touchscreen, model number CH800WX04A-CT, is a top-of-the-line product manufactured by Chenghao Optoelectronic in China's vibrant city of Shenzhen. This product is certified by CE, RoHS, and FCC, ensuring its quality and safety. With no minimum order quantity, you can order as many or as few of these touchscreens as you need. They come in carefully designed packaging to ensure they reach you in perfect condition.

Application Scenarios
The TFT Liquid Crystal Capacitive Screen is ideal for a wide range of applications, thanks to its high-quality display and touch sensitivity. It is perfect for use in industries such as consumer electronics, medical equipment, industrial control systems, and more. Whether you need a display for a smartphone, tablet, or any other device, this touchscreen is the perfect solution.



Scene 1: Home Automation System
Imagine controlling all the electronic devices in your home with just a single touch. The touch TFT LCD monitor allows you to do just that. With its LVDS interface, you can easily connect it to your home automation system and control everything from lighting to temperature with just a few taps. Its high resolution of 1280*720 dots ensures a clear and vibrant display of all your home's functions.

Scene 2: Medical Equipment
The touch TFT LCD is also widely used in medical equipment, such as patient monitoring systems, ultrasound machines, and more. Its capacitive touch panel, driven by the GT911 IC, offers high sensitivity and accuracy, making it perfect for medical professionals who need precise control and monitoring of equipment.

Scene 3: Industrial Control Systems
In industrial settings, where precision and efficiency are crucial, the TFT LCD Capacitive Touchscreen is the perfect solution. With its 1200 cd/m2 Luminance high brightness backlight, it offers clear visibility even in low-light conditions. Its Wide temperature resistant design and 50000h super long service life make it suitable for use in harsh environments, making it a preferred choice for industrial control systems.

Customization:

TFT LCD Capacitive Touchscreen - Customized Service

Chenghao Optoelectronic is a company that provides a variety of customized services, and we are committed to meeting the individual needs of our customers. The following is a customized description about Chenghao Optoelectronic:

Module customization: We provide a variety of display module customization services, including redesign of FPC shape and structure, brightness selection of backlight components, and definition of interface types. No matter which customized module you require, we can provide the perfect solution for your project needs.

Packaging customization: We value the safety of our products during transportation, so we use shipping boxes that meet export hardness standards and fill them with foam inside to prevent screen damage. We can also provide special packaging according to your requirements to ensure that the product is intact during transportation.

Transportation customization: We have established long-term relationships with multiple express logistics companies and are able to obtain discounts for our large-volume export orders. We can also provide customized transportation services according to your requirements to ensure that products arrive at their destination on time and safely.

FAQ:

Q: What is the brand name of this product?

A: The brand name of this product is Chenghao Optoelectronic.

Q: What is the model number of this product?

A: The model number of this product is CH800WX04A-CT.

Q: Where is this product made?

A: This product is made in China, specifically in Shenzhen.

Q: What certifications does this product have?

A: This product has CE, RoHS, and FCC certifications.

Q: Is there a minimum order quantity for this product?

A: No, there is no minimum order quantity for this product.

Q: How is this product packaged?

A: All the products are packed in the right way to keep them safe. For smaller sizes, we use tray + carton, and for bigger sizes, we use foam slot + carton. We also design packages according to customers' requirements.

Q: How long is the delivery time for this product?

A: The delivery time for this product is 3-7 days.

Q: What are the payment terms for this product?

A: The payment terms for this product are TT or other methods.

Q: What is the supply ability for this product?

A: The supply ability for this product is 20000000 pcs/month.



Shenzhen ChengHao Optoelectronic Co., Ltd.



+86 755-27806536



add@chenghaolcm.com



chenghaolcd.com

7th floor, building C5, Hengfeng Industrial City, Hangcheng street, Bao'an District, Shenzhen