

LVDS TFT Liquid Crystal Capacitive Screen With 8 Inch Color Active Display Area

Our Product Introduction

for more products please visit us on chenghaolcd.com

Basic Information

- Place of Origin: China Shenzhen
- Brand Name: Chenghao Optoelectronic
- Certification: CE RoHS FCC
- Model Number: CH800WX04A-CT
- Minimum Order Quantity: 100 pcs
- Packaging Details: All the products are packed in right way to keep it safe. For small sizes of products we use tray + carton, For bigger sizes we use foam slot + carton. we also design packages according to customers' requirements
- Delivery Time: 3~7 Days
- Payment Terms: TT or Others
- Supply Ability: 20000000 pcs/month



Product Specification

- Product Name: LVDS TFT Liquid Crystal Capacitive Screen
- Touch Panel Type: Capacitive
- Storage Temperature: -40 ~ +90°C
- Warranty: 12 Months
- Color Saturation: 16 M
- Touch Glass Cover Hardness: 6H
- Viewing Area: 177.24*99.96 Mm
- Resolution: 1280*720 Dots
- Active Area: 176.64*99.36 Mm
- Highlight: TFT Liquid Crystal Capacitive Screen,
LVDS TFT LCD Capacitive Touchscreen,
8 Inch TFT LCD Capacitive Touchscreen



More Images





Product Description

Product Description:

TFT LCD Capacitive Touchscreen Overview

The TFT LCD Capacitive Touchscreen CH800WX04A-CT is a display module produced by Chenghao Optoelectronics. The module uses an 8-inch LCD display with 1280x720 resolution and is equipped with a capacitive touch screen. It uses IPS display technology, supports 85/85/85/85 free viewing angles, has 16M color saturation and 800 contrast ratio. The backlight of this module uses white LED, and the brightness can be adjusted according to customer needs, up to 1200 cd/m2.

The appearance size of CH800WX04A-CT is 203.4*149.4*6.4 mm, the viewing area is 177.24*99.96 mm, and the effective area is 176.64*99.36 mm. The touch panel uses I2C interface, the thickness of the glass cover mirror is 0.7 mm, the hardness is 6H, and the light transmittance reaches more than 87%. The number of FPC pins of this module is 30.

High brightness backlight

The TFT LCD capacitive touch screen is equipped with 36 white LED backlights, which can provide bright and clear display even under outdoor sunlight, suitable for indoor and outdoor use.

8 inches Active Display Area

The TFT LCD Capacitive Touchscreen has an active display area with a diagonal value of 8 inches, which can display videos or images with 16M color and 1280*720 Resolution.

Support wide temperature environment

The TFT LCD capacitive touch screen adopts a wide temperature resistant design and can operate normally in an environment of -30~+85°C, and can be placed in an environment of -40~+90°C. This product is designed to withstand harsh environments and maintain its performance, providing durability and reliability for long-term use.

Features:

Product Name: **TFT LCD Capacitive Touchscreen**

Touch Panel Type: **Capacitive**

Resolution: **1280*720 Dots**

Color Saturation: **16 M**

Module Outline Size: **203.4*14.94*6.4 Mm**

Screen Size: **8 Inch**

Product Features:

High resolution display with 1280*720 dots

Capacitive touch panel for a responsive and intuitive touch experience

Vivid color saturation with support for 16 million colors

8 inch screen size for a comfortable viewing experience

Key Features:

TFT LCD Capacitance Touch Display: Provides high-quality display and touch functionality in one product

Touch Display: Allows for a more interactive and user-friendly experience

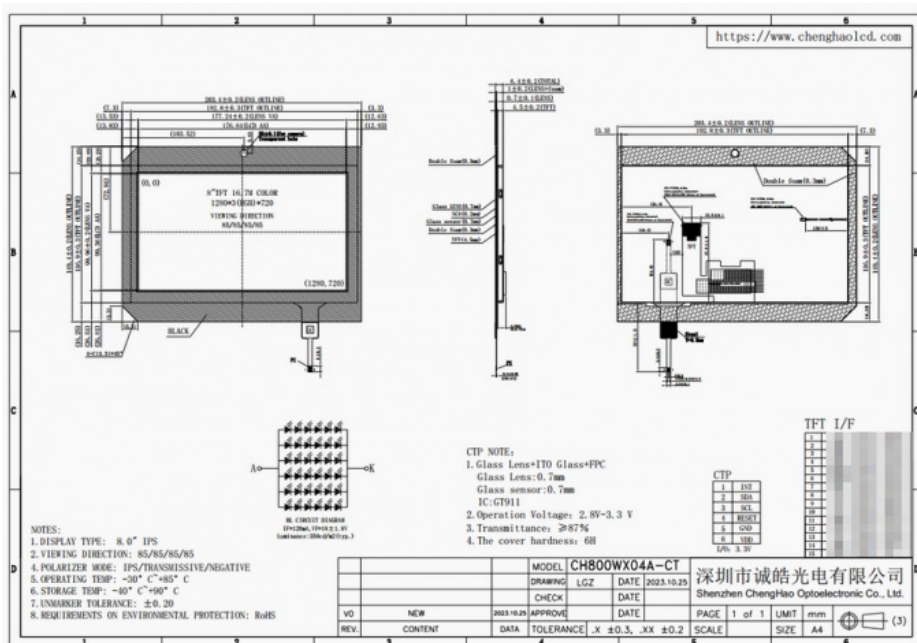
Touch LCD Screen: Utilizes capacitive technology for precise and accurate touch response

1280x720 High Resolution: Delivers sharp and detailed images for a superior viewing experience

Vivid Colors: Displays 16 million colors for a vibrant and lifelike display

Slim Design: Sleek and compact design for a modern and stylish look

8 Inch Screen: Perfect size for a variety of applications including gaming, multimedia, and more



Technical Parameters:

Product Name	TFT LCD Capacitive Touchscreen
Type	Thin Film Transistor Capacitance Touchscreen
Module Type	TFT Liquid Crystal Capacitance Touch Display
Storage Temperature	-40 ~ +90°C
Resolution	1280*720 Dots
Module FPC Pin Number	30 Pins
Contrast Ratio	800:1
Backlight Type	36 Pcs White LED
Module Outline Size	203.4*14.94*6.4 Mm
Touch Glass Cover Hardness	6H
Capacitive Touch Panel Driver IC	GT911
Active Area	176.64*99.36 Mm
Warranty	12 Months

Applications and Customization

TFT LCD Capacitive Touchscreen

CH800WX04A-CT has a wide range of applications and is widely used in various industries such as communication equipment, home appliances, industrial control, medical equipment, vehicle equipment, digital equipment, wearable equipment, and Internet of Things equipment. Specific application examples include GPS navigation, digital photo frames, netbooks, fingertip pulse meters, vehicle-mounted display equipment, payment financial equipment, customer terminal equipment, elevator display equipment, industrial control equipment, instrumentation equipment, artificial intelligence equipment, medical equipment, smart Home equipment, security identification equipment, vending machines, etc.



Medical equipment



Smart home



E-Bike

In addition to a wide range of application fields, Chenghao Optoelectronic also provides various forms of customization services, including module customization, packaging customization and transportation customization according to customer needs. In terms of module customization, they can redesign the FPC shape and structure according to the customer's project needs to ensure that the

module perfectly matches the installation equipment. In addition, they can also define module interface types according to customer requirements, supporting SPI, MCU, RGB, MIPI, LVDS, HDMI and other interface types. For customers who require touch interaction, Chenghao Optoelectronic provides two solutions, capacitive touch and resistive touch, to meet the needs of different application scenarios.

In short, CH800WX04A-CT is a display module with a wide range of application fields and customized services. Its high resolution, IPS display technology and capacitive touch screen make it have good application prospects in various industries. If you have project needs for LCD/LCM/LCD solutions, please contact Chenghao Optoelectronic, they will provide you with high-quality products and customized services.

For more information, please visit our website: www.chenghaolcd.com

FAQ:

Q: What is the brand name of this product?

A: The brand name of this product is Chenghao Optoelectronic.

Q: What is the model number of this product?

A: The model number of this product is CH800WX04A-CT.

Q: Where is this product manufactured?

A: This product is manufactured in China, specifically in Shenzhen.

Q: What certifications does this product have?

A: This product is certified with CE, RoHS, and FCC.

Q: Is there a minimum order quantity for this product?

A: No, there is no minimum order quantity for this product.

Q: How is this product packaged for shipping?

A: All the products are packed in a safe way, either in a tray and carton for small sizes or with foam slot and carton for bigger sizes. Packaging can also be customized according to customer's requirements.

Q: What is the delivery time for this product?

A: The delivery time for this product is 3 to 7 days.

Q: What are the payment terms for this product?

A: The payment terms for this product can be TT or other methods.

Q: How many units of this product can be supplied in a month?

A: This product has a supply ability of 20,000,000 units per month.



Shenzhen ChengHao Optoelectronic Co., Ltd.



+86 755-27806536



add@chenghaolcm.com



chenghaolcd.com

7th floor, building C5, Hengfeng Industrial City, Hangcheng street, Bao'an District, Shenzhen