



8 Inch Full Color LCD Display Module With Custom Touch Glass Cover

Our Product Introduction

for more products please visit us on chenghaolcd.com

Basic Information

- Place of Origin: China Shenzhen
- Brand Name: Chenghao Optoelectronic
- Certification: CE RoHS FCC
- Model Number: CH800WX04A-CT
- Minimum Order Quantity: 100 pcs
- Packaging Details: All the products are packed in right way to keep it safe. For small sizes of products we use tray + carton, For bigger sizes we use foam slot + carton. we also design packages according to customers' requirements
- Delivery Time: 3~7 Days
- Payment Terms: TT or Others
- Supply Ability: 20000000 pcs/month



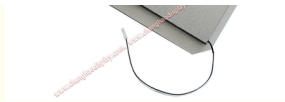
Product Specification

- Product Name: Lcd Display Module
- Display Type: 8"TFT + CTP
- Contrast Ratio: 800:1
- Touch Panel Interface: I2C
- Warranty: 12 Months
- Touch Panel Type: Capacitive
- Operating Temperature: -30 ~ +85 °C
- Backlight Type: 36 Pcs White LED
- Screen Size: 8 Inch
- Highlight: Full Color LCD Display Module , Glass Cover LCD Display Module



More Images





Product Description

Product Description:

Product Overview: TFT LCD Display Module

TFT LCD Display Module CH800WX04A-CT is a high-quality touch display that combines touch TFT LCD and capacitive touch screen technologies. With its excellent display performance, this product is ideally suited for various applications in the electronics industry.

(1) High resolution

The TFT LCD Display Module has a color display area with a diagonal measurement of 8 inches and can display 1280*720 pixels of video or pictures.

(2) Contrast

This TFT LCD capacitive touch screen has a contrast ratio of 800:1, delivering crisp and clear images with deep blacks and bright whites. Improves content visibility and readability even in bright lighting conditions.

(3) Touch screen glass transmittance

The light transmittance of the touch glass cover of this product is $\geq 87\%$, ensuring high sensitivity and accuracy of touch input. This allows for smooth, easy navigation, perfect for touch-based applications.

Features:

Product Name: TFT LCD Display Module

Touch Panel Operation Voltage: 2.8V~3.3V

Warranty: 12 Months

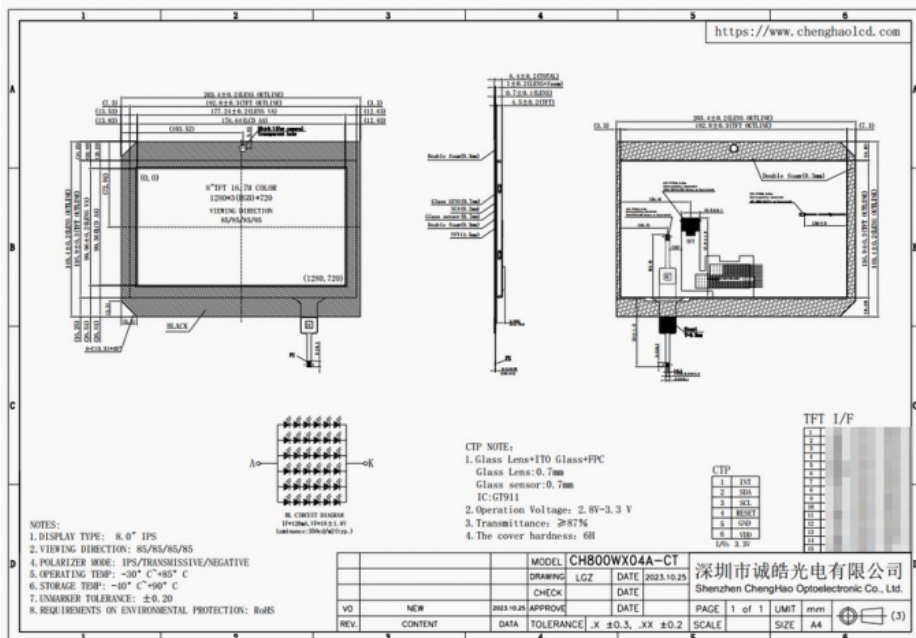
Display Mode: Transmissive / IPS / Normally Black

Backlight Type: 36 Pcs White LED

Touch Panel Type: Capacitive

Touch Panel Interface: I2C

Luminance: 1200 cd/m2



Technical Parameters:

LCD Module	TFT LCD Capacitive Touch Panel
Operating Temperature:	-30 ~ +85 °C
Warranty:	12 Months
Screen Size:	8 Inch

Resolution:	1280*720 Dots
Active Area:	176.64*99.36 Mm
Module Outline Size:	203.4*14.94*6.4 Mm
Touch Panel Interface:	I2C
Module FPC Pin Number:	30 Pins
Display Mode:	Transmissive / IPS / Normally Black
Storage Temperature:	-40 ~ +90°C

Applications:

TFT LCD Display Module - Chenghao Optoelectronic

The TFT LCD Display Module by Chenghao Optoelectronic is a high-quality display solution for a wide range of applications. With its advanced technology and reliable performance, this product has gained popularity in the market and has been widely used in various industries.

The TFT LCD Capacitive Touchscreen is suitable for a variety of applications, including but not limited to:

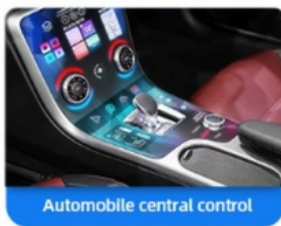
Industrial Control Systems: With its high resolution and fast response time, the touch TFT can be used in industrial control systems to display real-time data and allow for easy control and navigation.

Medical Devices: The touch TFT can be integrated into medical devices, such as patient monitoring systems, to provide a clear and interactive display for medical professionals.

Gaming Consoles: The touch TFT can be used in gaming consoles to provide a more immersive and interactive gaming experience for players.

Automotive Infotainment Systems: The touch TFT can be used in car infotainment systems to display navigation, entertainment, and other important information in a user-friendly way.

Smart Home Control Panels: The touch TFT can be used in smart home control panels to provide a visually appealing and intuitive interface for controlling various home systems.



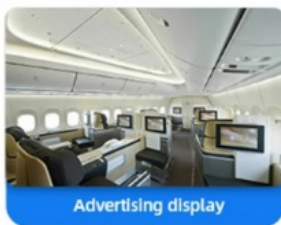
Automobile central control



Large shopping malls



Smart watch



Advertising display



Medical industrial



Intelligent robot

Customization:

TFT LCD Display Module - Customized Service

As a professional optoelectronic product supplier, Chenghao Optoelectronics is committed to providing customers with customized services to meet the needs of different customers. We provide various forms of customization services, including module customization, packaging customization and transportation customization.

First of all, our module customization services are very rich and diverse. We can redesign the shape and structure of the FPC according to the customer's project needs to ensure a perfect fit for the installation equipment. In addition, we provide backlight components with a variety of brightness options, allowing customers to choose the appropriate brightness according to actual needs. The module interface type can also be defined according to customer requirements, supporting SPI, MCU, RGB, MIPI, LVDS, HDMI and other interface types. For customers with touch interaction requirements, we provide capacitive touch and resistive touch solutions to meet different application scenarios.

Secondly, our packaging customization service can be personalized according to customer needs. We can change the packaging method and use the shipping method specified by the customer. In order to ensure that the product is not damaged during transportation, our product packaging uses large boxes filled with foam. In addition, we can also carry out personalized packaging according to customer requirements to meet their brand image and market needs.

Finally, our transportation customization services are designed to provide convenient and reliable logistics support. We have established long-term relationships with several express logistics companies who can provide us with discounts due to our large export volumes. Our professional after-sales service team can provide strong guarantee and logistics technical support for customer orders. In addition, our products undergo strict quality inspection and testing before shipment, and pass CE/ROHS certification to ensure product quality and safety.

To sum up, Chenghao Optoelectronics supports customized services through module customization, packaging customization, transportation customization and other methods to meet the personalized needs of customers. We are committed to providing customers with high-quality products and personalized solutions to meet the needs of different industries and application fields. Thank you for your

attention and support to Chenghao Optoelectronics!

FAQ:

Q: What is the brand of TFT LCD Capacitive Touchscreen?

A: The brand name of this product is Chenghao Optoelectronic.

Q: What is the model number of this product?

A: The model number is CH800WX04A-CT.

Q: Where is this product manufactured?

A: This product is manufactured in China, specifically in Shenzhen.

Q: What certifications does this product have?

A: This product is certified with CE, RoHS, and FCC.

Q: What is the minimum order quantity for this product?

A: There is no minimum order quantity for this product.

Q: How is this product packaged?

A: All products are packed in a safe and secure manner. For smaller sizes, we use tray + carton packaging while for larger sizes, we use foam slot + carton. We can also customize packaging according to customer's requirements.

Q: What is the average delivery time for this product?

A: The average delivery time is 3-7 days.

Q: What are the payment terms for this product?

A: The payment terms for this product are TT (telegraphic transfer) or other methods agreed upon by both parties.

Q: What is the supply ability for this product?

A: The supply ability for this product is 20 million pieces per month.



Shenzhen ChengHao Optoelectronic Co., Ltd.



+86 755-27806536



add@chenghaolcm.com



chenghaolcd.com

7th floor, building C5, Hengfeng Industrial City, Hangcheng street, Bao'an District, Shenzhen