



85/85/85/85 All Viewing Angle IPS TFT LCD Touch Screen 8 Inch 1280x720 Pixels

Our Product Introduction

for more products please visit us on chenghaolcd.com

Basic Information

- Place of Origin: China Shenzhen
- Brand Name: Chenghao Optoelectronic
- Certification: CE RoHS FCC
- Model Number: CH800WX04A-CT
- Minimum Order Quantity: 100 pcs
- Packaging Details: All the products are packed in right way to keep it safe. For small sizes of products we use tray + carton, For bigger sizes we use foam slot + carton. we also design packages according to customers' requirements
- Delivery Time: 3~7 Days
- Payment Terms: TT or Others
- Supply Ability: 20000000 pcs/month



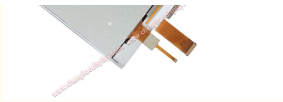
Product Specification

- Product Name: IPS Tft Lcd Touch Screen
- Resolution: 1280*720 Dots
- Touch Panel Type: Capacitive
- Brightness: 1200 Cd/m2 (Can Be Modified According To Customer Requirements)
- Touch Panel Operation Voltage: 2.8V~3.3V
- Touch Panel Interface: I2C
- Color Saturation: 16 M
- Touch Glass Cover Hardness: 6H
- Display Type: 8" TFT + CTP
- Highlight: IPS TFT LCD Touch Screen , 1280x720 Pixels TFT LCD Touch Screen



More Images





Product Description

Product Description:

IPS Tft Lcd Touch Screen | Product Overview

CH800WX04A-CT is an 8-inch LCD display module launched by Chenghao Optoelectronics with excellent parameters and functions.

First of all, this module uses 1280x720 resolution to provide clear image display. Equipped with an 8-inch TFT display that supports 16M color saturation, making images more vivid and realistic. At the same time, the use of IPS display technology can achieve a free viewing angle of 85/85/85/85, allowing users to obtain a clear visual experience at different angles.

Secondly, the CH800WX04A-CT module is equipped with a capacitive touch panel, using the GT911 touch panel driver IC with an operating voltage range of 2.8V~3.3V. This touch panel technology can realize human-computer interaction and provide users with a more convenient operating experience.

The module also features a white LED backlight that provides up to 1200 cd/m2 brightness. This backlight design makes the display clearly visible in a variety of environments, maintaining good visibility even in direct sunlight.

In addition, the CH800WX04A-CT module has good temperature adaptability. It adopts a wide temperature design and can work normally in the temperature range of -30°C to +85°C. This enables the module to work stably and reliably in various harsh environments.

For packaging and transportation, Chenghao Optoelectronics adopts strict standards to ensure that the products are not damaged during transportation. All shipping packaging meets export hardness standards and is filled with foam inside to prevent screen damage. In addition, product packaging uses a combination of large boxes and small boxes, with a weight not exceeding 3.5 kilograms. According to standards, pallets or wooden frames may be used to transport goods.

To sum up, the CH800WX04A-CT module is an 8-inch LCD display module with excellent parameters and functions. It uses high-resolution, IPS display technology and a capacitive touch panel, is equipped with a high-brightness backlight, and has good temperature adaptability. Chenghao Optoelectronics also provides a variety of customized services to meet customers' individual needs. Whether in the fields of industry, home appliances, consumer electronics or medical equipment, the CH800WX04A-CT module can provide unique, innovative and cost-effective solutions to meet the needs of different applications and industries.

Features:

Product Name: IPS Tft Lcd Touch Screen

Storage Temperature: -40 ~ +90°C

Brightness: 1200 Cd/m2 (Can Be Modified According To Customer Requirements)

Operating Temperature: -30 ~ +85 °C

Module FPC Pin Number: 30 Pins

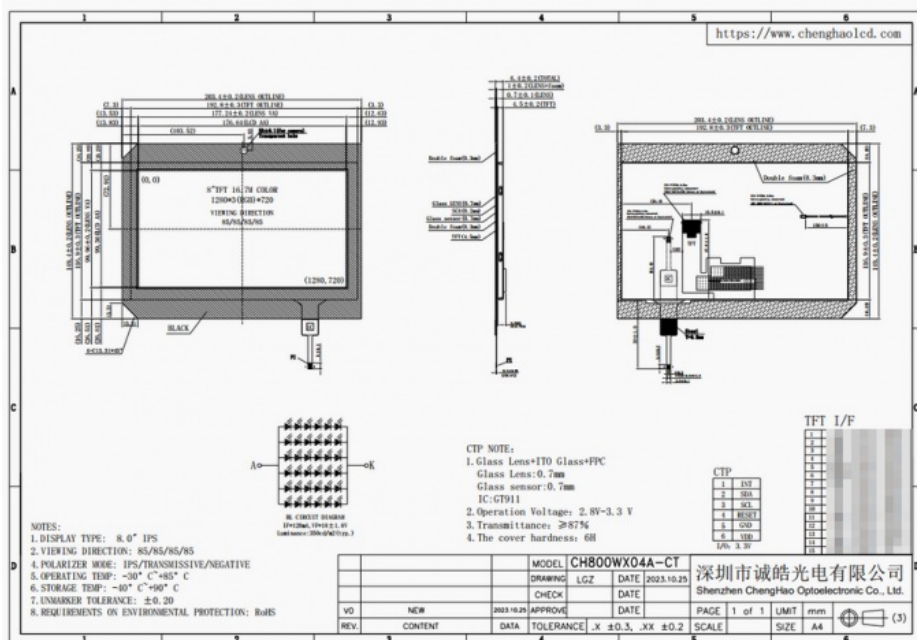
Module Outline Size: 203.4*14.94*6.4 Mm

Touch TFT monitor

TFT touch screen display

Touch display

LCD touchscreen monitor



Technical Parameters:

Product Name	IPS Tft Lcd Touch Screen
Screen Size	8 Inch
Contrast Ratio	800:1
Touch Glass Cover Transmittance	$\geq 87\%$
Brightness	1200 Cd/m ² (Can Be Modified According To Customer Requirements)
Module Outline Size	203.4*14.94*6.4 Mm
Storage Temperature	-40 ~ +90°C
Viewing Angle	85/85/85/85
Resolution	1280*720 Dots
Touch Glass Cover Hardness	6H
Touch Panel Operation Voltage	2.8V~3.3V
Product Keywords	lcd display module, TFT LCD Capacitance Touch Display, tft lcd color monitor

Applications:

Chenghao Optoelectronics' **IPS Tft Lcd Touch Screen** features high resolution, multi-touch capabilities and wide viewing angles, making it suitable for a wide range of applications and scenarios, including:

- Industrial control terminal equipment
- Vehicle infotainment system
- Consumer Electronics
- smart home devices
- IoT terminal receiver
- Face recognition system
- There are a lot more

With its advanced technology and superior quality, our TFT LCD capacitive touch screens are an important component in many electronic devices, providing enhanced user experience and improved functionality.



Medical equipment



Smart home



E-Bike

Customization:

Chenghao Optoelectronics provides various forms of customization services, including module customization services, packaging customization services and transportation customization services.

The first is module customization service. Our display module customization services cover the following (but are not limited to):

FPC customization: We can redesign the shape and structure of the FPC according to the customer's project needs so that it can perfectly fit the installation equipment.

Backlight design: We can provide customers with backlight components with a maximum brightness of 2800 cd/m2. Customers can choose the appropriate brightness according to actual needs.

Module interface customization: Our display module can define the interface type according to customer requirements. Supported interface types include SPI, MCU, RGB, MIPI, LVDS, HDMI, etc.

For customers with touch interaction needs, we provide two touch solutions, namely capacitive touch solutions and resistive touch solutions. Among them, the core of the capacitive touch solution is to design a touch glass cover that meets the requirements of the application equipment, including glass thickness, hardness, etc.

The second is packaging customization services. Our product packaging meets export hardness standards and is filled with foam inside to prevent screen damage. The weight of each box does not exceed 3.5 kg, and the dimensions may vary according to standards. We will use pallets or wooden frames to transport goods. If customers need it, we can design packaging and change the packaging method according to customer requirements.

Finally, there is the shipping customization service. We have long-term cooperative relationships with many express logistics companies. Due to our large export volume, these express companies can give us discounts. Of course, if customers need it, we can use the transportation method specified by the customer.

Through Chenghao Optoelectronics' customized services, customers can obtain customized display modules, packaging and transportation solutions according to their own needs. We are committed to providing customers with unique, innovative, high-quality solutions that meet the needs of different applications and industries, and ensure product quality and reliability through strict quality control and certification.

FAQ:

Q: What is the brand name of this product?

A: The brand name of this product is Chenghao Optoelectronic.

Q: What is the model number of this product?

A: The model number of this product is CH800WX04A-CT.

Q: Where is this product made?

A: This product is made in China, specifically in Shenzhen.

Q: What certifications does this product have?

A: This product is certified with CE, RoHS, and FCC.

Q: Is there a minimum order quantity for this product?

A: No, there is no minimum order quantity for this product.



Shenzhen ChengHao Optoelectronic Co., Ltd.



+86 755-27806536



add@chenghaolcm.com



chenghaolcd.com

7th floor, building C5, Hengfeng Industrial City, Hangcheng street, Bao'an District, Shenzhen