



2800 Nits High Brightness Industrial Display Module 10.1 Inch 1280x800

Our Product Introduction

for more products please visit us on chenghaolcd.com

Basic Information

- Place of Origin: China Shenzhen
- Brand Name: Chenghao Optoelectronic
- Certification: CE RoHS FCC
- Model Number: CH101WX05A-CTD
- Minimum Order Quantity: 100 pcs
- Packaging Details: All the products are packed in right way to keep it safe. For small sizes of products we use tray + carton, For bigger sizes we use foam slot + carton. we also design packages according to customers' requirements
- Delivery Time: 3~7 Days
- Payment Terms: TT or Others
- Supply Ability: 20000000 pcs/month



Product Specification

- Product Name: Industrial Grade Display Module
- Module Outline Size: 246.16*159*5.8 Mm
- Touch Panel Type: Capacitive
- Brightness: 700 Cd/m2 (optional)
- Touch Panel Interface: I2C
- Resolution: 1280*800 Dots
- Display Mode: Transmissive/IPS/Normally Black
- Storage Temperature: -30 ~ +80°C
- Color Saturation: 16 M
- Highlight: 2800 Nits Industrial Display Module, High Brightness Industrial Display Module



More Images





Product Description

Product Description:

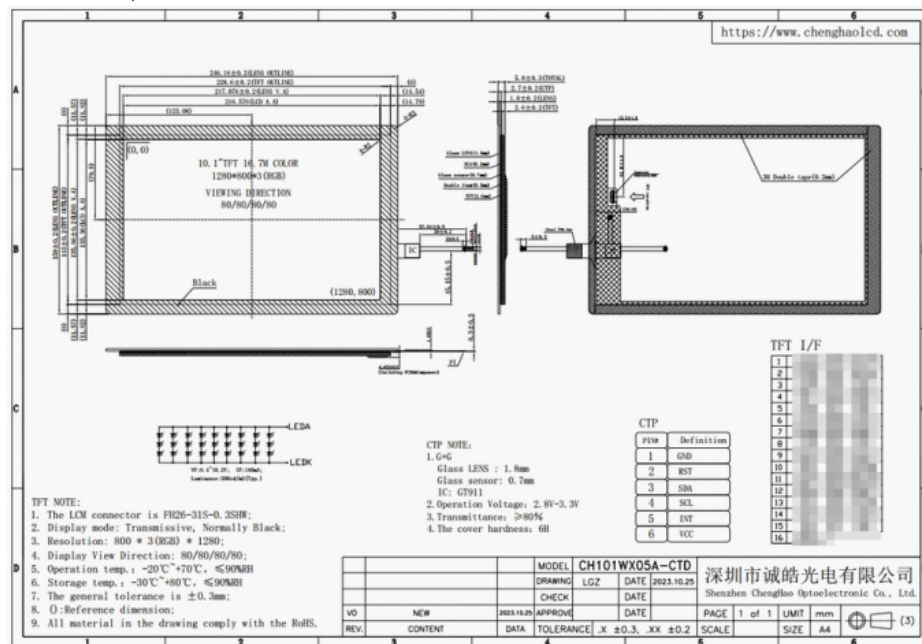
The Industrial Grade Display Module is a high-quality thin film transistor capacitive touch screen, with a module size of 246.16 x 159 x 5.8 millimeters, an effective area of 216.576 x 135.36 millimeters, a resolution of 1280 * 800 points, a screen brightness of 2800 cd/m2, and support for strong light visibility. The display module adopts IPS display technology, allowing users to clearly read the screen from different perspectives, greatly improving the user experience.

Module No	CH101WX05A-CTD
Display Mode	IPS/Transmissive/Normally Black
Viewing Angle	80/80/80/80
Resolution	1280x800 dots
Luminance	2800 cd/m2
Module Size	246.16*159*5.8 mm
Viewing Area	217.076*135.86 mm
Active Area	216.576*135.36 mm
Operating Temperature	-20 ~ +70 °C
Storage Temperature	-30 ~ +80 °C

Customization:

We are a professional LCD module manufacturer that not only provides customers with a large number of standard display modules, but also offers customized services. We can modify the Industry grade display module CH101WX05A-CTD according to customer requirements, including the external structure of the FPC, Display Module Interface, backlight brightness, screen anti glare, printing the corporate logo, and replacing the touch panel. In addition to product customization, we can also modify product packaging according to customer requirements.

Of course, if you have any other requirements, you can also inform our customer service staff, and we will do our best to meet your reasonable requirements.



Applications:

The Industry grade display module CH101WX05A-CTD from Chenghao Optoelectronics is the perfect choice for various applications. This product has passed CE, RoHS, and FCC certifications and does not have a minimum order quantity requirement. It has a 10.1-inch screen size and an 800:1 contrast, with module dimensions of 246.16 * 159 * 5.8 millimeters. It is equipped with an I2C touch panel

interface and can be stored in environments ranging from -30 to +80 °C. The product is packed in a safe way, using trays and cartons for small sizes, and foam tanks and cartons for large sizes. Customers can even customize the packaging according to their own requirements. The delivery time is within 3 to 7 days, and the supply capacity is 20 million pieces per month. The payment terms are also very flexible and can accept wire transfer or other methods.



This Industry grade display module is suitable for a wide range of applications, such as industrial applications, automotive applications, medical applications, electronic gaming applications, etc. Its outstanding features make it very suitable for applications that require high-performance displays, such as consumer electronics, medical devices, and automotive equipment. This product has high contrast, a wide temperature range, and a reliable touchpad interface, providing users with an excellent viewing experience.

Support and Services:

TFT LCD Capacitive Touchscreen Technical Support and Services

We provide comprehensive technical support and services for our TFT LCD Capacitive Touchscreen products. Our goal is to ensure that you can get the most out of your product. We are committed to providing you with the best possible experience in using our products. Our technical support team is on hand to answer any questions or queries you may have. We will work with you to resolve any issues and ensure that you are satisfied with our product. We also provide a range of services, such as installation, maintenance and repair, to get you up and running quickly.

We understand that customer satisfaction is paramount. We are dedicated to providing you with the best possible experience in using our products, and our technical support and services are part of that commitment.

Packing and Shipping:

1. All of our shipping boxes meet the export hardness standards
2. All of our boxes will be padded with foam inside to prevent screen damage
3. Our product packaging adopts a large box with small boxes
4. The weight of each box does not exceed 3.5 kilograms, and the dimensions may vary depending on the standard. We will use pallets or wooden frames for the goods

The above packaging methods are all to prevent damage to the display module during transportation, and we can also package the goods according to the customer's wishes.

FAQ:

Q1: What is the Brand Name of this product?

A1: The Brand Name of this product is Chenghao Optoelectronic.

Q2: What is the Model Number of this product?

A2: The Model Number of this product is CH101WX05A-CTD.

Q3: Where is this product from?

A3: This product comes from Shenzhen, China.

Q4: What certifications does this product have?

A4: This product is certified by CE, RoHS and FCC.

Q5: What is the minimum order quantity for this product?

A5: This product has no minimum order quantity.



Shenzhen ChengHao Optoelectronic Co., Ltd.



+86 755-27806536



add@chenghaolcm.com



chenghaolcd.com

7th floor, building C5, Hengfeng Industrial City, Hangcheng street, Bao'an District, Shenzhen