



## 10.1 Inch 50 Pins Fpc Lcd Display Module 1000 Cd/M2 Brightness

### Our Product Introduction

for more products please visit us on [chenghaolcd.com](http://chenghaolcd.com)

#### Basic Information

- Place of Origin: China Shenzhen
- Brand Name: Chenghao Optoelectronic
- Certification: CE RoHS FCC
- Model Number: CH101WS03A-T
- Minimum Order Quantity: 100 pcs
- Packaging Details: All the products are packed in right way to keep it safe. For small sizes of products we use tray + carton, For bigger sizes we use foam slot + carton. we also design packages according to customers' requirements
- Delivery Time: 3~7 Days
- Payment Terms: TT or Others
- Supply Ability: 50000000 pcs/month



#### Product Specification

- Application: Industrial Equipment
- Display Viewing Angle: 80/80/80/80
- Module Type: 10.1"TFT + RTP + HDMI Board
- Touch Panel Interface: USB
- FPC Pin Number: 50 Pins
- Active Area: 222.72\*125.28 Mm
- Display Life Span: 50000H
- Display Operating Temperature: -20 °C ~ +70°C
- Highlight: 50 pins lcd display module,  
1000 cd/m2 brightness lcd display module,  
10.1inch lcd module



#### More Images





## Product Description

### Product Description:

Our LCD display module is the perfect choice for enterprises that require reliable, versatile, and high-performance display solutions. It has a response time of 16 milliseconds and a lifespan of 50000 hours, supporting IPS free viewing angle and touch feedback. The LCD display module has multiple interfaces to choose from, including RGB, MCU, SPI, MIPI, LVDS, HDMI, etc. As a leading manufacturer of tft displays, we design and manufacture our LCD display modules with the highest quality materials and components to ensure the continuous use of your products in the coming years. Our LCD factory has passed ISO9001 and ISO14001 certifications, ensuring the highest level of quality control. With our LCD display module, you can rest assured that you will receive the highest quality products.

### Features:

Product Name: LCD Display Module  
Display Response Time: 16 Ms  
Active Area: 222.72\*125.28 Mm  
Application: Industrial Equipment  
Storage Temperature: -30 °C ~ +80°C  
TFT Lcd Panel Interface: HDMI  
Manufacturer: lcd factory  
Display Type: color lcd display  
Display Technology: tft display screen

### Technical Parameters:

Property	Details
Working Power Supply	DC12V/2A
Module Type	10.1"TFT + RTP + HDMI Board
Display Viewing Angle	80/80/80/80
Display Certification	CE,RoHS
Operating Temperature	-20 °C ~ +70°C
Touch Panel Type	Resistive
Display Mode	Transmissive/Normally Black/IPS
FPC Pin Number	50 Pins (Custom Made)
Active Area	222.72*125.28 Mm
Display Size	10.1 Inch

### Applications:

The CH101WS03A-T LCD display module from Shenzhen Optoelectronics is the perfect choice for various applications. The 10.1-inch active area of this display module is 222.72 \* 125.28mm, with 50 FPC pins, supporting touch feedback and free viewing angle. It supports use in a wide temperature environment and can work in environments ranging from -20 °C to+70 °C. In addition, the module has passed CE, RoHS, and FCC certifications to ensure its quality standards for customers.



Whether you are looking for IPS displays, IPS displays, LCD factories, LCD modules, LCD displays, LCD panels, or LCD display modules, Chenghao Optoelectronics' CH101WS03A-T LCD display module is the perfect choice for you. With its high quality, wide temperature range, and excellent packaging, it is sure to meet all your needs.

### Support and Services:

We provide technical support and service for our LCD Display Module. Our service includes:

[Troubleshooting and installation assistance](#)

[Replacement parts and accessories](#)

[Warranty and repair services](#)

### Packing and Shipping:

1. All of our shipping boxes meet the export hardness standards
2. All of our boxes will be padded with foam inside to prevent screen damage
3. Our product packaging adopts a large box with small boxes
4. The weight of each box does not exceed 3.5 kilograms, and the dimensions may vary depending on the standard. We will use pallets or wooden frames for the goods

The above packaging methods are all to prevent damage to the display module during transportation, and we can also package the goods according to the customer's wishes.

### FAQ:

**Q1. What is the Brand Name of this LCD Display Module?**

A1. The Brand Name of this LCD Display Module is **Chenghao Optoelectronic**.

**Q2. What is the Model Number of this LCD Display Module?**

A2. The Model Number of this LCD Display Module is **CH101WS03A-T**.

**Q3. Where is this LCD Display Module made?**

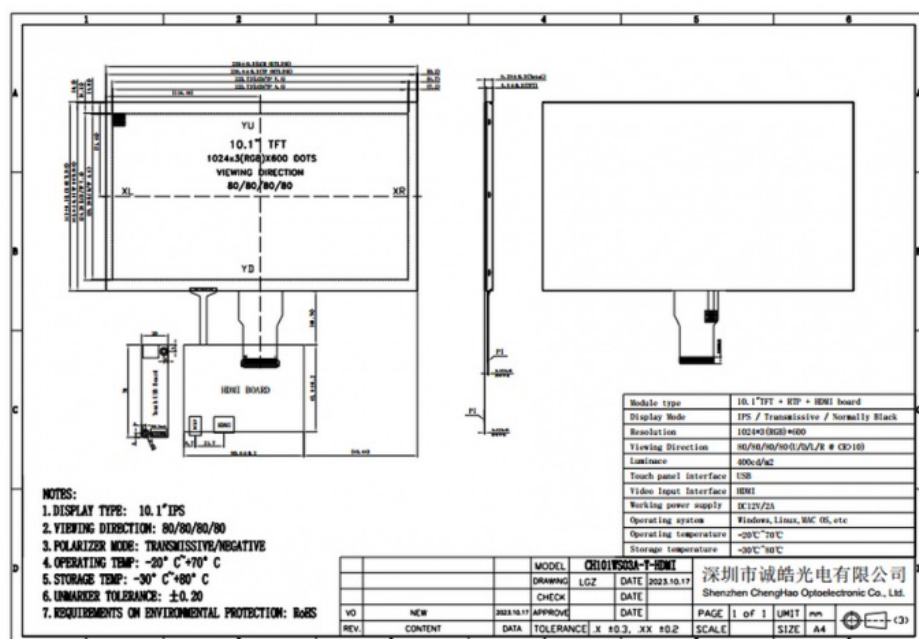
A3. This LCD Display Module is made in **China, Shenzhen**.

**Q4. What certifications does this LCD Display Module have?**

A4. This LCD Display Module has **CE, RoHS and FCC** certifications.

**Q5. What is the minimum order quantity for this LCD Display Module?**

A5. There is **No Moq** for this LCD Display Module.





**Shenzhen ChengHao Optoelectronic Co., Ltd.**

---



+86 755-27806536



add@chenghaolcm.com



chenghaolcd.com

7th floor, building C5, Hengfeng Industrial City, Hangcheng street, Bao'an District, Shenzhen