



Tft 1500cd/M2 High Brightness Lcd Display Module 10.1 Inch 80/80/80/80 Viewing Angle

Our Product Introduction

for more products please visit us on chenghaolcd.com

Basic Information

- Place of Origin: China Shenzhen
- Brand Name: Chenghao Optoelectronic
- Certification: CE RoHS FCC
- Model Number: CH101WS03A-T
- Minimum Order Quantity: 100 pcs
- Packaging Details: All the products are packed in right way to keep it safe. For small sizes of products we use tray + carton, For bigger sizes we use foam slot + carton. we also design packages according to customers' requirements
- Delivery Time: 3~7 Days
- Payment Terms: TT or Others
- Supply Ability: 50000000 pcs/month



Product Specification

- FPC Pin Number: 50 Pins
- Touch Panel Type: Resistive
- Display Contrast Ratio: 800:1
- Color: 16.7M
- Module Type: 10.1"TFT + RTP + HDMI Board
- Brightness: 1500cd/m2
- TFT Lcd Panel Interface:HDMI
- Display Viewing Angle: 80/80/80/80
- Screen Size: 10.1 Inch
- Highlight: 1500cd/m2 lcd display module,
wide viewing angle lcd display module,
10.1inch tft lcd display module



Product Description

Product Description:

This LCD Display Module is designed with a TFT Lcd Panel Interface of HDMI, a Touch Panel Interface of USB, a Display Backlight of White LED, and a Operating Temperature of -30°C ~ +80°C. With a color of 16.7M, it stands out as an excellent color display screen, color tft screen, TFT module, and LCD display module.

This LCD Display Module has a high definition resolution that offers a wide range of color depth and contrast. It is designed with an optimized angle of view, providing you with a great visual experience. It also has a wide operating temperature range, making it suitable for any environment.

Features:

Product Name: LCD Display Module

Module: CH103WS03A-T

LCM Outline: 235*143*6.29 Mm

Display Viewing Angle: 80/80/80/

Module Type: 10.1"TFT + RTP + HDMI Board

Display Contrast Ratio: 800:1

Display Resolution: 1024*600 Dots

10.1 inch display

Color LCD Screen

LCD Module

TFT LCD

800:1 contrast ratio

Technical Parameters:

Parameter	Specification
Touch Panel Type	Resistive
Display Life Span	50000H
Color	16.7M
LCM Outline	235*143*6.29 Mm
FPC Pin Number	50 Pins
Display Backlight	White LED
Touch Panel Interface	USB
Display Operating Temp	-20 ~ +70°C
Display Response Time	16 Ms
Working Power Supply	DC12V/2A

Applications:

The CH101WS03A-T display module of Chenghao Optoelectronics is a high-quality product certified by CE, RoHS, and FCC. It does not have a minimum order quantity for customers. For products of smaller size, pallets and cartons can be used for packaging. For products of larger size, foam tanks and cartons can be used for packaging. It can also be customized according to customer requirements. The delivery time is usually 3-7 days, and the payment terms can be TT or other methods. The supply capacity is 50000000 pieces per month.

The display size of the CH101WS03A-T LCD display module is 10.1 inches, with a response time of 16 milliseconds and a contrast ratio of 800:1. It also has an FPC with 50 pins and a display storage temperature of -30~+850 °C. This product is widely used in color displays, automotive LCD displays, and industrial LCD displays.



Support and Services:

We provide technical support and service for LCD Display Module, including:

24/7 customer service and technical assistance
Free installation and setup assistance
Troubleshooting and repair services
Replacement of defective parts
Warranty coverage

Packing and Shipping:

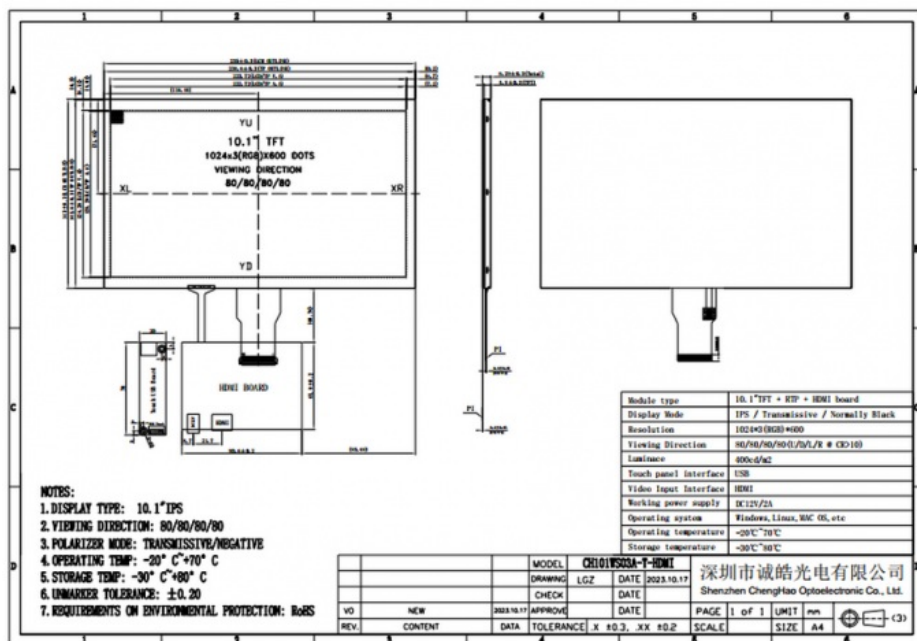
Packaging and Shipping for LCD Display Module

For the safe delivery of LCD Display Module, the following packaging and shipping techniques are applied:

The LCD Display Module is packed in a bubble wrap bag to ensure that it is not damaged in transit.
The LCD Display Module is then placed in a sturdy cardboard box.
The package is then sealed with a protective tape.
The package is shipped to the customer via a reliable shipping carrier.

FAQ:

Q: What is the Brand Name of this LCD Display Module?
A: The Brand Name of this LCD Display Module is Chenghao Optoelectronic.
Q: What is the Model Number of this LCD Display Module?
A: The Model Number of this LCD Display Module is CH101WS03A-T.
Q: Where is this LCD Display Module made?
A: This LCD Display Module is made in Shenzhen, China.
Q: What Certifications does this LCD Display Module have?
A: This LCD Display Module has CE, RoHS, and FCC Certifications.
Q: What is the Minimum Order Quantity for this LCD Display Module?
A: There is no Minimum Order Quantity for this LCD Display Module.



Shenzhen Chenghao Optoelectronic Co., Ltd.



+86 755-27806536



add@chenghaolcm.com



chenghaolcd.com

7th floor, building C5, Hengfeng Industrial City, Hangcheng street, Bao'an District, Shenzhen