



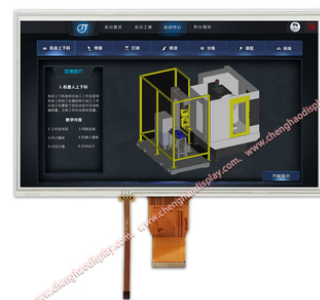
Sunlight Readable Touch Screen Module Color Tft Display 10.1 Inch With Hdmi Interface

Our Product Introduction

for more products please visit us on chenghaolcd.com

Basic Information

- Place of Origin: China Shenzhen
- Brand Name: Chenghao Optoelectronic
- Certification: CE RoHS FCC
- Model Number: CH101WS03A-T
- Minimum Order Quantity: 100 pcs
- Packaging Details: All the products are packed in right way to keep it safe. For small sizes of products we use tray + carton, For bigger sizes we use foam slot + carton. we also design packages according to customers' requirements
- Delivery Time: 3~7 Days
- Payment Terms: TT or Others
- Supply Ability: 50000000 pcs/month

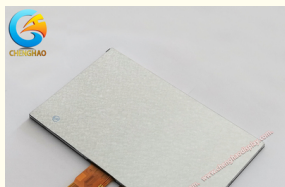


Product Specification

- Display Certification: CE RoHS
- Lcm Outline: 235*143*6.29 Mm
- Display Mode: Transmissive/Normally Black/IPS
- Display Backlight: White LED
- Display Response Time: 16 Ms
- Display Size: 10.1 Inch
- Color: 16.7M
- TFT Lcd Interface: HDMI
- Screen Size: 10.1 Inch
- Highlight: sunlight readable touch screen module, hdmi interface touch screen module, sunlight readable tft lcd display module



More Images





Product Description

Product Description:

Our 10.1-inch color LCD display module is designed to meet a wide range of applications. It has an excellent 1024 * 600 activity area and a wide viewing angle of 80/80/80, providing the best viewing experience. This LCD display module adopts a slim and fashionable design, with a thickness of only 6.29mm and an overall size of 235 * 143mm. The design is durable and reliable, with a service life of up to 50000H, a working temperature range of -20 °C to +70 °C, and a storage temperature range of -30 °C to +80 °C. This LCD display module is an ideal choice for various applications such as automotive, medical, industrial, and consumer electronics.

Features:

Product Name: LCD Display Module

Module No: CH101WS03A-T

Operating Temperature: -20 °C ~ +70°C

TFT Lcd Panel Interface: HDMI

Module Type: 10.1"TFT + RTP + HDMI Board

Working Power Supply: DC12V/2A

lcd module from lcd factory

Technical Parameters:

Parameter	Value
Touch Panel Interface	USB
Display Operating Temperature	-20 °C ~ +70°C
Color	16.7M
Display Size	10.1 Inch
Working Power Supply	DC12V/2A
Display Backlight	White LED
Display Life Span	50000H
Application	Industrial Equipment
Display Mode	Transmissive/Normally Black
Display Response Time	16 Ms
Display Screen	IPS/TFT
Display Module	TFT LCD Module

Applications:

The CH101WS03A-T LCD display module of Chenghao Optoelectronics is a 10.1-inch TFT LCD color display screen, certified by CE, RoHS, and FCC, with no minimum order quantity and a response time of 16 milliseconds. This module is powered by a DC12V/2A power supply and can operate normally in a wide temperature environment. It is manufactured in Shenzhen, China, and samples can be shipped within 3-7 days. Payment terms are TT or other agreed upon methods. The monthly supply capacity of this module is 20 million pieces, making it an excellent choice for your next project.



smart cup



ammeter



multimeter



tanker

Support and Services:

LCD Display Module Technical Support and Service

We provide technical support and service for our LCD Display Modules. This includes:

[Phone support for troubleshooting and product installation](#)

[Onsite repair or replacement for defective products](#)

[Technical documentation and resources](#)

If you have any questions or require additional information about our LCD Display Modules, please contact us.

Packing and Shipping:

1. All of our shipping boxes meet the export hardness standards
2. All of our boxes will be padded with foam inside to prevent screen damage
3. Our product packaging adopts a large box with small boxes
4. The weight of each box does not exceed 3.5 kilograms, and the dimensions may vary depending on the standard. We will use pallets or wooden frames for the goods

The above packaging methods are all to prevent damage to the display module during transportation, and we can also package the goods according to the customer's wishes.

FAQ:

Q1: What is the Brand name of this LCD Display Module?

A1: The Brand name of this LCD Display Module is Chenghao Optoelectronic.

Q2: What is the Model Number of this LCD Display Module?

A2: The Model Number of this LCD Display Module is CH101WS03A-T.

Q3: Where is the Place of Origin of this LCD Display Module?

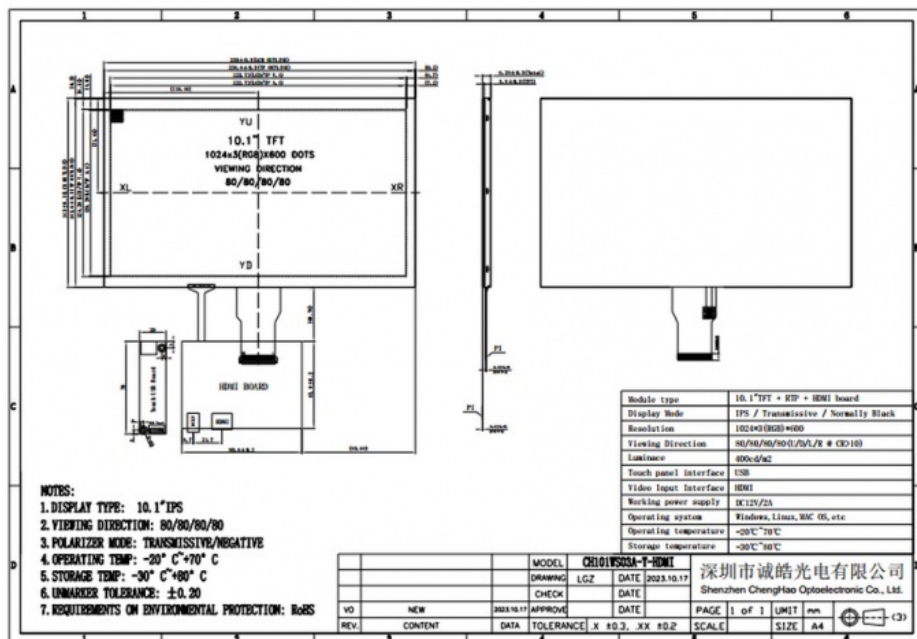
A3: The Place of Origin of this LCD Display Module is China, Shenzhen.

Q4: What are the Certifications of this LCD Display Module?

A4: The Certifications of this LCD Display Module are CE, RoHS, FCC.

Q5: What is the Minimum Order Quantity of this LCD Display Module?

A5: The Minimum Order Quantity of this LCD Display Module is No Moq.



Shenzhen ChengHao Optoelectronic Co., Ltd.



+86 755-27806536



add@chenghaolcm.com



chenghaolcd.com

7th floor, building C5, Hengfeng Industrial City, Hangcheng street, Bao'an District, Shenzhen