

## Full Color Touch Display Lcd Module Tft Hdmi Interface 50000h Life Time 10.1 Inch

### Our Product Introduction

for more products please visit us on [chenghaolcd.com](http://chenghaolcd.com)

#### Basic Information

- Place of Origin: China Shenzhen
- Brand Name: Chenghao Optoelectronic
- Certification: CE RoHS FCC
- Model Number: CH101WS03A-T
- Minimum Order Quantity: 100 pcs
- Packaging Details: All the products are packed in right way to keep it safe. For small sizes of products we use tray + carton, For bigger sizes we use foam slot + carton. we also design packages according to customers' requirements
- Delivery Time: 3~7 Days
- Payment Terms: TT or Others
- Supply Ability: 50000000 pcs/month



#### Product Specification

- Module Type: 10.1"TFT + RTP + HDMI Board
- Display Operating Temp: -20 ~ +70°C
- Application: Industrial Equipment
- Working Power Supply: DC12V/2A
- Display Size: 10.1 Inch
- Display Contrast Ratio: 800:1
- Display Viewing Angle: 80/80/80/80
- Storage Temperature: -30 °C ~ +80°C
- Highlight: hdmi interface lcd module tft,  
50000h lcd module tft,  
hdmi interface touch screen display module



## Product Description

### Product Description:

The LCD display module is a 10.1 "TFT color screen display with a resolution of 1024 \* 600 dots. It is equipped with an HDMI interface driver board, supporting touch feedback and wide temperature environments. The module type is 10.1" TFT+RTP+HDMI board. It also supports a free perspective. It is an excellent choice for embedded system development, industrial automation, and medical device applications.

### Features:

Product Name: LCD Display Module

Support For Touch Feedback

Equipped With HDMI Interface Driver Board

Support For A Free Viewing Angle

Supports A Wide Temperature Environment

Active Area: 222.72\*125.28 Mm

Display Certification: CE,RoHS

Display Operating Temp: -20 ~ +70℃

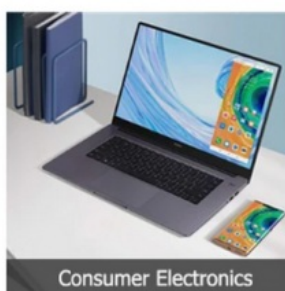
Keywords: LCD Display, Widescreen LCD, IPS Display, Touch Feedback, HDMI Interface Driver Board, Free Angle, Wide Temperature Environment

### Technical Parameters:

Parameter	Value
Module Type	10.1"TFT + RTP + HDMI Board
TFT Lcd Panel Interface	HDMI
Viewing Direction	80/80/80/80
Display Contrast Ratio	800:1
Display Size	10.1 Inch
Display Backlight	White LED
Display Life Span	50000H
Active Area	222.72*125.28 Mm
Display Operating Temperature	-20 °C ~ +70℃
Display Mode	Transmissive/Normally Black
Keywords	IPS Display, TFT LCD Screen, Color Display Screen

### Applications:

The CH101WS03A-T LCD display module is a multifunctional and reliable color display screen developed by a trusted supplier of Chenghao Optoelectronic. It has passed CE, RoHS, and FCC certifications, without MOQ, and samples can be delivered within 3-7 days. It has a 167M color, equipped with a 50 Pins FPC, white LED backlight, and an HDMI interface driver board. It also supports a wide temperature range (-30 °C to+80 °C) and free angle views. The product is safely packed in a tray or carton (or foam tank+carton, applicable to large size), which can be customized according to customer requirements. The operating temperature range of this LCD display module is -20 °C to+70 °C, and it supports touch feedback, making it the perfect choice for commercial and industrial applications



### Support and Services:

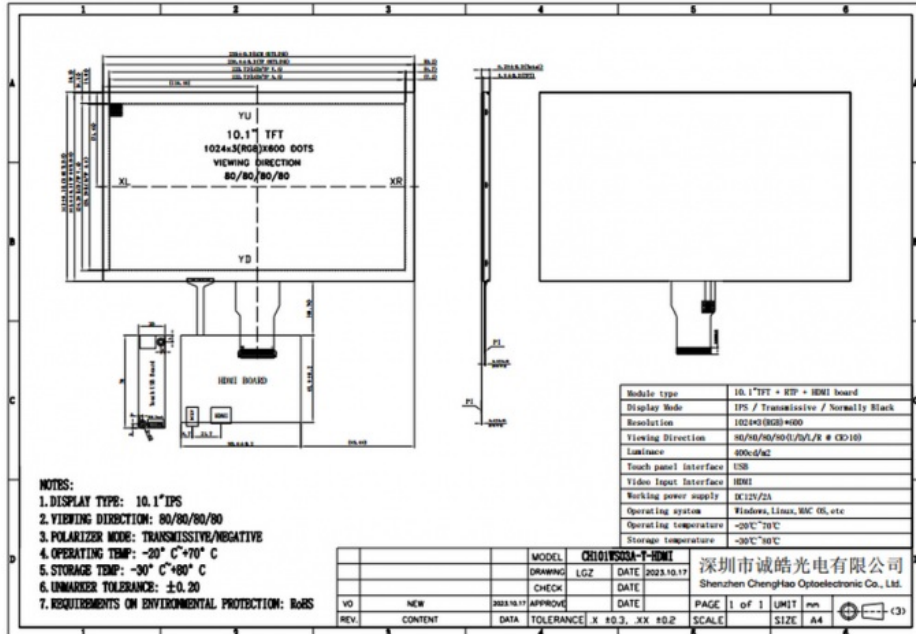
We provide technical support and services for LCD display modules. Our technical support and services include:

Answer technical questions related to the LCD display module.  
 Troubleshooting and resolving any issues with the LCD display module.  
 Guide customers to use the LCD display module correctly.  
 Provide updates and patches for the LCD display module.

## Packing and Shipping:

LCD Display Module packaging and shipping:

The LCD Display Module is securely packaged in a foam-lined box to protect it from any damage during transportation. The box is then sealed with plastic wrap and labeled with relevant shipping information, such as the destination address and the contents of the package. The box is then placed inside a larger shipping box and secured with packing material. The shipping box is then sealed and labeled with the shipping information and sent to its destination.



## FAQ:

Q: What is the Brand Name?

A: The Brand Name is Chenghao Optoelectronic.

Q: What is the Model Number?

A: The Model Number is CH101WS03A-T.

Q: Where is the Place of Origin?

A: The Place of Origin is China, Shenzhen.

Q: What are the Certification?

A: The Certifications are CE, RoHS, FCC.

Q: What is the Minimum Order Quantity?

A: There is No Moq.

Q: What is the Packaging Details?

A: All the products are packed in right way to keep it safe. For small sizes of products we use tray + carton, For bigger sizes we use foam slot + carton. We also design packages according to customers' requirements.



Shenzhen ChengHao Optoelectronic Co., Ltd.



+86 755-27806536



add@chenghaolcm.com



chenghaolcd.com

7th floor, building C5, Hengfeng Industrial City, Hangcheng street, Bao'an District, Shenzhen