



2.0 Inch 240*320 Ips Tft Lcd Display Rgb Interface Reliable Product

Our Product Introduction

for more products please visit us on chenghaolcd.com

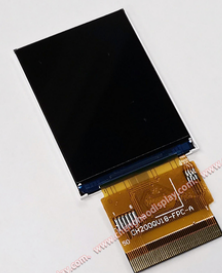
Basic Information

- Place of Origin: China, Shenzhen
- Brand Name: Chenghao Optoelectronic
- Certification: CE RoHS
- Model Number: CH200QV18B
- Minimum Order Quantity: 100 pcs
- Packaging Details: All the products are packed in right way to keep it safe. For small sizes of products we use tray + carton, For bigger sizes we use foam slot + carton. we also design packages according to customers' requirements
- Delivery Time: 7-15 working days
- Supply Ability: 300Kpcs/month

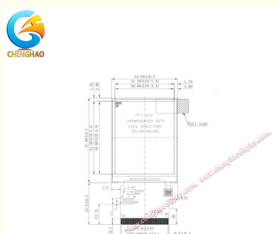
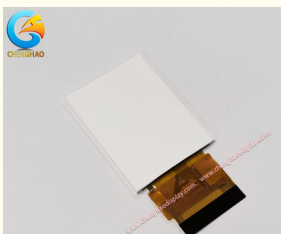


Product Specification

- Viewing Angle: 85/85/85/85
- Contrast Ratio: 800:1
- Display Mode: RGB Vertical Stripe
- Module Size: 34.6(W)×47.8(H)×2.0(T) Mm
- Viewing Area: 31.2(W)×41.4(H) Mm
- Storage Temperature: -30 ~ +80
- Display Type: IPS LCD
- Size: 2.0 Inch
- Resolution: 240*320
- Highlight: 2.0 inch ips tft lcd display,
240*320 ips tft lcd display,
rgb interface display lcd ips



More Images



Product Description

Product Description:

IPS LCD Display is a color TFT display, built with ST7789 driver IC, which provides a wide viewing angle of 85/85/85/85. It has a high resolution of 240*320 dots and its display mode is Transmissive/Normally Black. With a brightness of 1000 cd/m2 and a wide operating temperature range of -20 ~ +70, IPS LCD Display is an ideal choice for various applications.

Features:

Product Name: IPS LCD Display
 Life Time: 50000 H
 Operating Temperature: -20 ~ +70
 Active area: 30.6(W)×40.8(H) Mm
 Display mode: RGB Vertical Stripe
 Storage Temperature: -30 ~ +80
 2 inch LCD Display
 LCD Display Factory

Technical Parameters:

Parameter	Value
Viewing Angle	85/85/85/85
Interface	SPI+RGB / MCU / RGB
Brightness	1000 Cd/m2
Response Time	16 Ms
Size	2.0 Inch
Viewing Area	31.2(W)×41.4(H) Mm
Operating Temperature	-20 ~ +70
Color Saturation	262K & 65K
Contrast Ratio	800:1
Driver IC	ST7789

Applications:

The **Chenghao Optoelectronic CH200QV18B** is a 2 inch IPS LCD Display with a **viewing area of 31.2 (W) x 41.4 (H) mm** and a **resolution of 240*320**. It offers a **contrast ratio of 800:1** with a **storage temperature of -30 ~ +80**. It has been certified as **CE** and **RoHS**. The minimum order quantity is 1pcs and it is packed in a secure way with tray + carton for small sizes and foam slot + carton for bigger sizes. It has been designed in such a way that it can be customized as per customer's requirements. It is available with a delivery time of 7-15 working days and a supply ability of 300Kpcs/month. This 2 inch IPS LCD Display is an ideal choice for Industrial control equipment, automotive displays, medical equipment, household appliances, IoT devices, etc



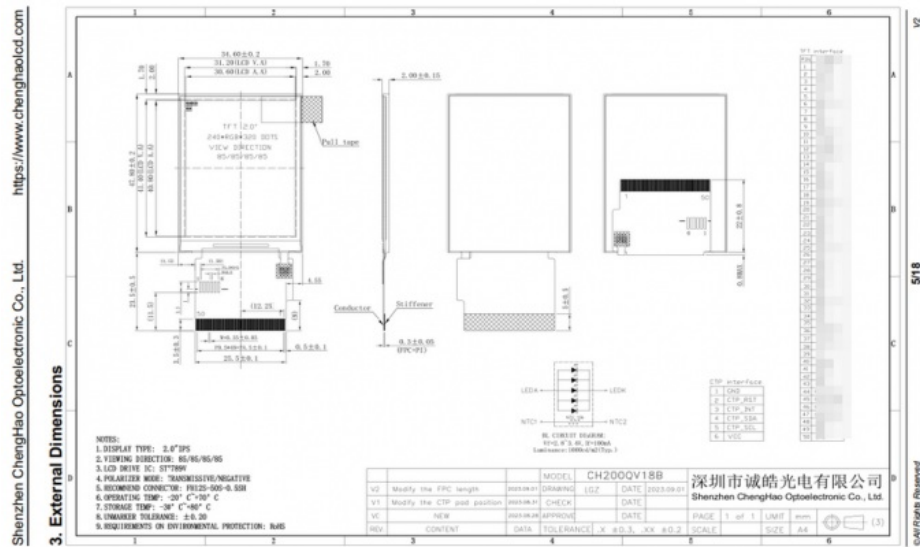
Support and Services:

IPS LCD Display Technical Support and Service:
 24/7 customer service support through phone, email and live chat.
 Provide technical assistance for product troubleshooting.
 Guarantee product quality and performance.

Repair or replace defective products.
Software upgrades and updates.
Provide ongoing customer training.

Packing and Shipping:

Packaging and Shipping for IPS LCD Display
The IPS LCD Display will be carefully packaged in a sturdy cardboard box with foam protection.
The box will be sealed and labelled with the appropriate shipping address.
The package will be shipped via a reliable courier service.
Tracking information will be available so that the customer can easily follow the progress of their shipment.



Shenzhen ChengHao Optoelectronic Co., Ltd.



+86 755-27806536



add@chenghaolcm.com



chenghaolcd.com

7th floor, building C5, Hengfeng Industrial City, Hangcheng street, Bao'an District, Shenzhen