



1000 Nits High Brightness Hd+ Ips Lcd Display 2 Inch With Connector 50 Pins Fpc

Our Product Introduction

for more products please visit us on chenghaolcd.com

Basic Information

- Place of Origin: China, Shenzhen
- Brand Name: Chenghao Optoelectronic
- Certification: CE RoHS
- Model Number: CH200QV18B
- Minimum Order Quantity: 100 pcs
- Packaging Details: All the products are packed in right way to keep it safe. For small sizes of products we use tray + carton, For bigger sizes we use foam slot + carton. we also design packages according to customers' requirements
- Delivery Time: 7-15 working days
- Supply Ability: 300Kpcs/month



Product Specification

- Color Saturation: 262K & 65K
- Back Light: 5 White LED In Parallel
- Active Area: 30.6(W)×40.8(H) Mm
- Response Time: 16 Ms
- Size: 2.0 Inch
- Connector: 50 Pins FPC
- Contrast Ratio: 800:1
- Resolution: 240*320
- Highlight: 1000 nits hd+ ips lcd display,
hd+ ips lcd display 2 inch,
50 pins fpc display lcd ips



More Images



Product Description

Product Description:

CH200QV18B IPS LCD Display is a 2.0 inch small LCD panel with a high brightness of 1000 Cd/m2, 800:1 contrast ratio, making it perfect for outdoor applications. It features a 50 pins FPC connector, supporting MCU, RGB, and SPI+RGB multi-interface. This 2 inch IPS display offers excellent wide viewing angle, high color saturation, fast response time and low power consumption.

Features:

- Product Name:** IPS LCD Display
- Brightness:** 1000 Cd/m2
- Display Type:** IPS TFT LCD
- Operating Temperature:** -20 ~ +70
- Color saturation:** 262K & 65K
- Size:** 2.0 Inch
- Resolution:** 240x320

Technical Parameters:

Parameter	Specification
Resolution	240*320
Life Time	50000 H
Size	2.0 Inch
Operating Temperature	-20 ~ +70
Contrast Ratio	800:1
Active area	30.6(W)×40.8(H) Mm
Display mode	IPS
Interface	SPI+RGB/MCU/RGB
Viewing Angle	85/85/85/85
Connector	50 Pins FPC

Applications:

Chenghao Optoelectronic's CH200QV18B IPS LCD Display is an ideal choice for a wide range of applications and scenarios. With a 2 inch LCD screen and a resolution of 85/85/85/85, the CH200QV18B has a quick response time of 16ms and a RGB vertical stripe display mode. It is also designed to operate at temperatures ranging from -20 to +70 degrees Celsius, making it suitable for a variety of environments. Moreover, the CH200QV18B has passed CE and RoHS certifications, and it is available in minimum orders of 1 PC. Packaging of the CH200QV18B is designed to ensure safe delivery, with smaller sizes using trays and cartons, and larger sizes using foam slots and cartons. Our supply ability is 300Kpcs/month, and the delivery time is 7-15 working days.



Thermometer



Calculator



Car speedometer



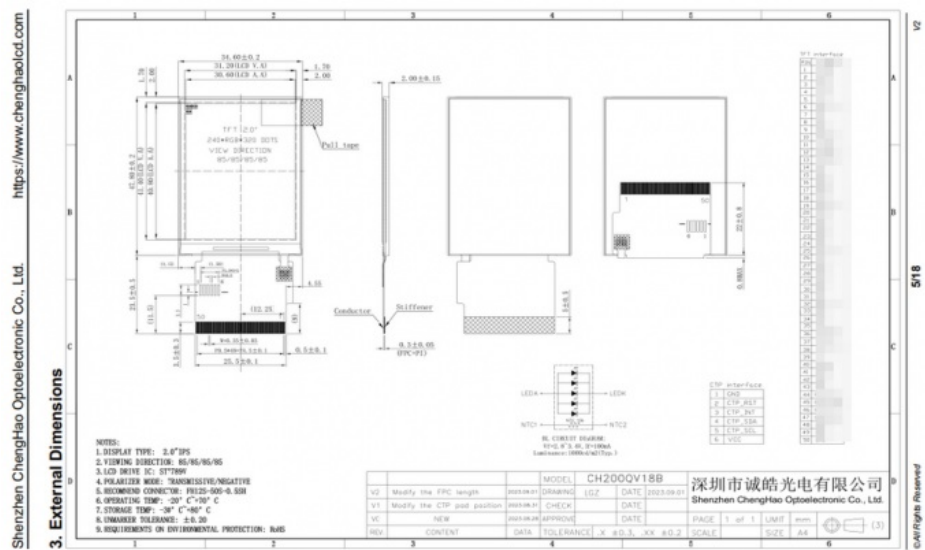
GPS tracker

Support and Services:

For technical support and service for IPS LCD Display, please contact our customer service team at support@example.com. We are available 7 days a week from 9AM to 9PM EST to answer all your queries. Our customer service team is dedicated to providing you with the best service possible. We also offer troubleshooting guides on our website www.example.com/troubleshooting to help you resolve any issue quickly.

Packing and Shipping:

IPS LCD Display Packaging and Shipping:
The IPS LCD Display will be shipped in a well-protected box, with foam or other cushioning material to ensure the safe delivery of the product. The box should be clearly labeled with the product name, the name of the manufacturer, the model number and other relevant information. The box should also be sealed to avoid any moisture or dust entering the product.



Shenzhen ChengHao Optoelectronic Co., Ltd.



+86 755-27806536



add@chenghaolcm.com



chenghaolcd.com

7th floor, building C5, Hengfeng Industrial City, Hangcheng street, Bao'an District, Shenzhen